

## Miami-Dade Qualified Severe Duty Louver Enclosure

### Application and Design

SDLE is a gravity intake or exhaust penthouse designed to meet the stringent performance requirements established by the Florida Building Code (Miami-Dade County) test protocols TAS 201 (Large Missile Impact Test), TAS 202 (Uniform Static Air Pressure Test) and TAS 203 (Cyclic Wind Loading). Design incorporates Greenheck model ESD-603D (Miami-Dade qualified louver). Model SDLE is Miami-Dade County tested. No field assembly is required as all units are fully assembled. The severe duty steel curb is supplied by Greenheck only.

### Standard Construction

**Louvered perimeter:** 0.125 in. thick 6063-T5 extruded aluminum, 6 in. deep of screwed/welded construction.

**Louver support:** 10 ga. x 3 in. deep painted steel channels at perimeter and 10 ga. painted steel Zee with aluminum blade support brackets at midpoint for throat opening greater than 32 1/2 in.

**Structural support:** 1/4 in. x 2 in. x 2 in. steel frame

**Birdscreen:** Aluminum or steel mesh on inside of louver (non-structural)

**Finish:** Mill

**Maximum curb dim.:** 57 1/2 in. either direction

**Maximum height:** 52 in. without curb

**Maximum throat size:** 54 in. wide x 54 in. long x 24 in. high

**Hood:** Reinforced 0.100 in. thick aluminum, hinged for access and anchored at perimeter with 1/4-20 stainless steel screws, two per side and at minimum 23 in. spacing. One piece for throat <32 1/2 in.; two piece for larger throat sizes.

**Fastening to curb:** 3/8-16 plated steel screws through curb cap, one each corner, 12 in. max. spacing

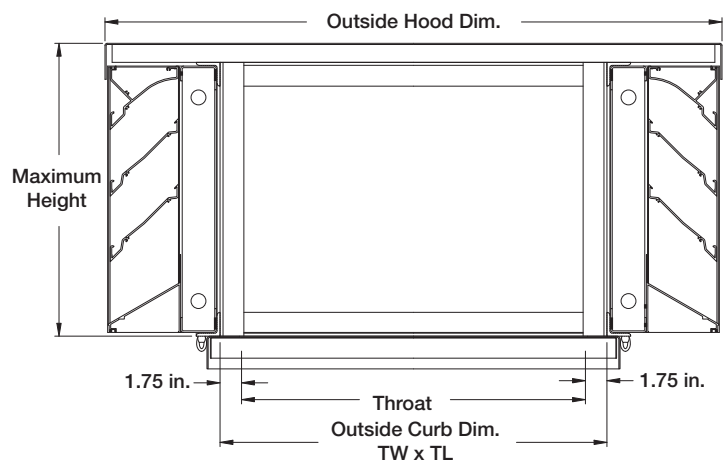
**Corner covers:** 0.125 in. thick formed aluminum angle, fastened with #10 stainless steel screw on 12 in. max. centers

**Curb:** 12 ga. painted steel with 1 3/4 in. lip at top and 4 in. flange at bottom. Available in 12 in., 18 in., or 24 in. height. Heights greater than 12 in. are reinforced at interior with 12 ga. x 2 in. x 2 in. angles, leg out.

**Anchorage:** Intent to have anchorage substantiated by others due to the many possible substrates. Qualified as Hilti 3/8-16 x 3 Kwik Bolt II, 2 1/2 in. embed on 12 in. maximum centers into 3000 psi concrete, OR Hilti #12-14 Kwik-Flex self-drilling screw, #3 point, on 4 1/2 in. maximum spacing, 3 screws per corner.

**Qualified substrates:** 12 ga. steel, 3000 psi concrete

**Maximum design load:** 140 psf (6.8 kPa)



### Options (at additional cost)

- A variety of bird and insect screens
- A variety of architectural finishes including:
  - Clear anodize
  - Integral color anodize
  - Baked enamel
  - Kynar
- Motorized dampers

# PRODUCT DATA

# SDLE

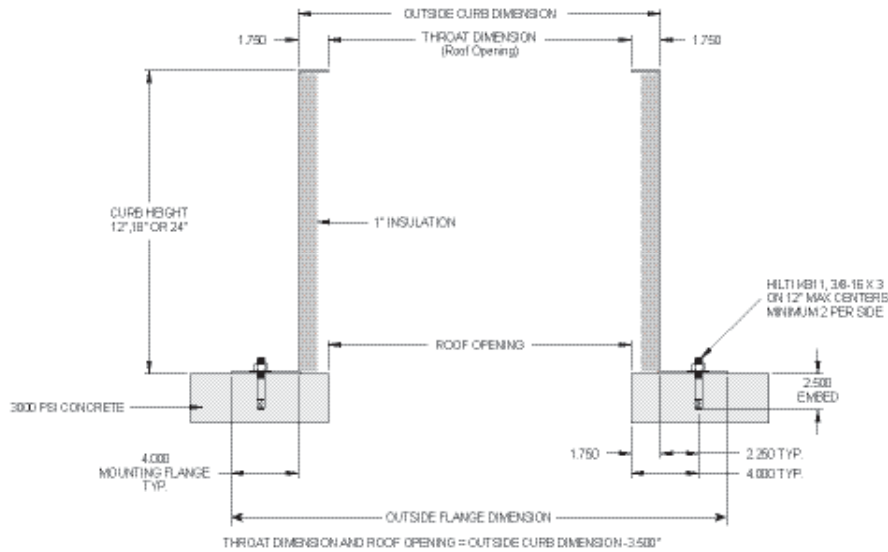
Florida Product Approval No: FL4825.1

Miami-Dade NOA No.: 08-1107.04

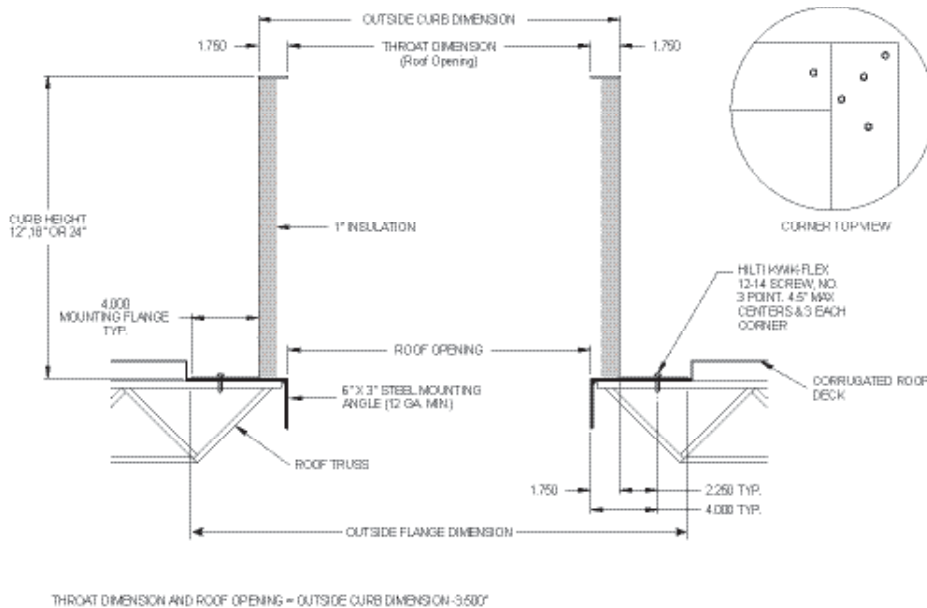
## Size and Performance Chart

Model	Throat Dimension	Roof Opening	Outside Curb Dimension	Outside Flange Dimension	Louver Free Area (Sq. ft.)	Throat Free Area (Sq. ft.)	Max Intake/Exhaust Volume (CFM), Throat Velocity (FPM)	Louver Free Area Intake Velocity (FPM)	Louver Airflow Resistance	Application Volume Range (CFM)	Unit Weight (Lbs.)
SDLE-12	12 x 12	12 x 12	15.5 x 15.5	23.5	1.7	1.0	800, 800	476	0.07	0-800	300
SDLE-18	18 x 18	18 x 18	21.5 x 21.5	29.5	2.5	2.3	1800, 800	725	0.08	801-1900	400
SDLE-24	24 x 24	24 x 24	27.5 x 27.5	35.5	5.7	4.0	3200, 800	563	0.06	1901-3300	500
SDLE-30	30 x 30	30 x 30	33.5 x 33.5	41.5	10.1	6.3	5000, 800	496	0.06	3301-5100	700
SDLE-36	36 x 36	36 x 36	39.5 x 39.5	47.5	15.6	9.0	7200, 800	461	0.05	5101-7400	900
SDLE-42	42 x 42	42 x 42	45.5 x 45.5	53.5	22.3	12.3	9800, 800	439	0.05	7401-10,000	1100
SDLE-48	48 x 48	48 x 48	51.5 x 51.5	59.5	30.2	16.0	12,800, 800	423	0.05	10,001-13,000	1300
SDLE-54	54 x 54	54 x 54	57.5 x 57.5	65.5	39.2	20.3	16,200, 800	413	0.05	13,001-16,500	1500

### Concrete



### Steel



SDLE  
October 2008 Rev. 2  
Copyright © 2008 Greenheck Fan Corporation

Greenheck Fan Corporation reserves the right to make product changes without notice.