

Standard Features

- Detects and limits the spread of smoke throughout building HVAC ducts
- Ability to interconnect up to 30 units using the same independent power supply
- Compatible with building automation and fire alarm systems
- Installs quickly and easily
- Interchangeable "Plug-in" photoelectric or ionization heads
- No screens or filters to clean
- Cover provides magnet window and placement guide for operational testing without disassembly
- Rugged gray steel box with clear cover
- Accessories - Remote power, remote alarm indication capability and remote, horn/piezo capability
- Meets UL 268A requirements

Description

The HOCHIKI AMERICA DH-98 Duct Smoke Detector provides early detection of smoke and products of combustion present in air moving through HVAC ducts in Commercial, Industrial and Residential applications. The DH-98-P is designed to prevent the recirculation of smoke in areas by the air handling systems, fans, and blowers. Complete systems may be shut down in the event of smoke detection. The HOCHIKI AMERICA DH-98-P operate on 115 VAC, 24 VAC and 24 VDC.

The DH-98-P is designed and built to meet all local requirements, as well as the NFPA regulations regarding duct smoke detectors. Output terminals are provided for remote accessories such as a horn, strobe, remote status indicators and reset key switches or push buttons.

Listings

UL268A
CSFM 3240-0410:155
FM Approved 3005751

"UL CLASSIFIED (see complete marking on product)"
"UL CLASSIFIED to Canadian safety standards (see complete marking on product)"
Standard 555 (Listing #R13317)
Standard 555S (Listing #R13447)

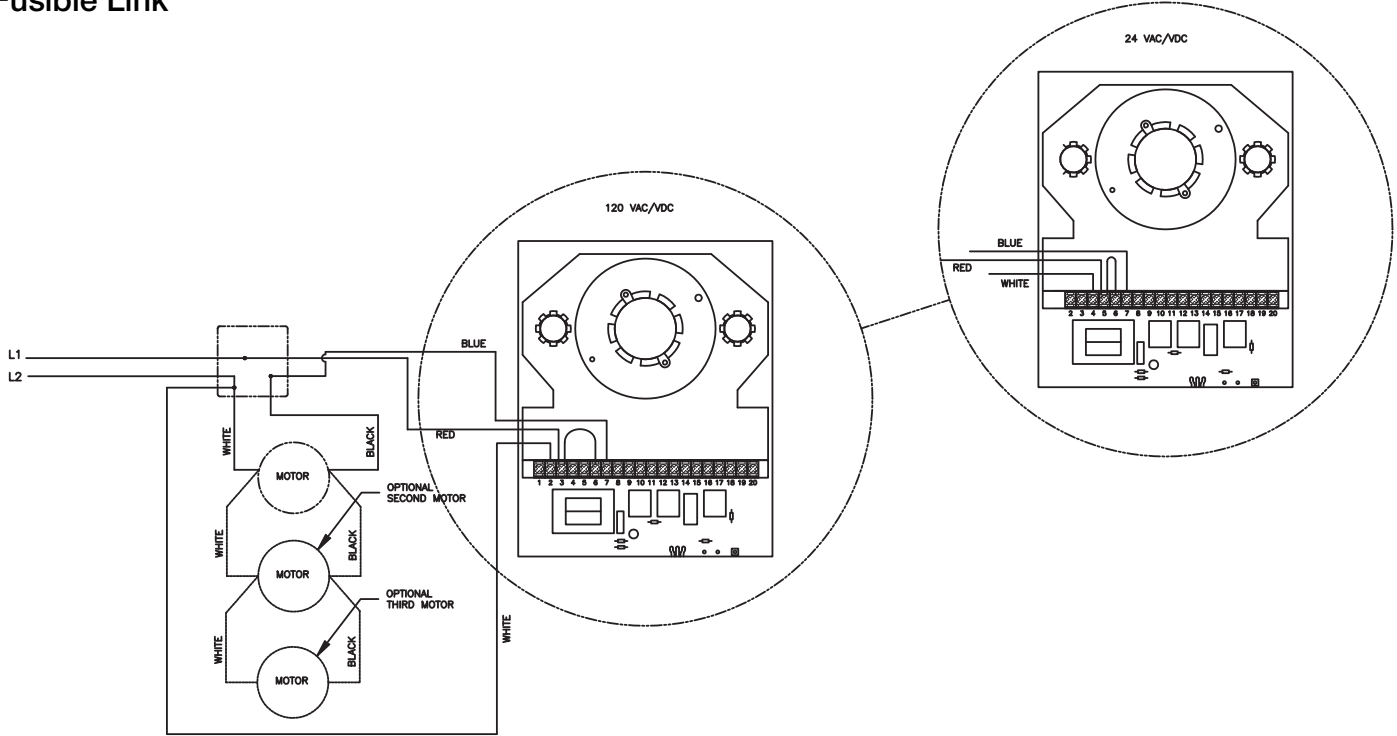
**Notes**

1. Minimum air velocity for smoke detector operation is 300 fpm (1.5 m/s). Maximum is 4000 fpm (20.3 m/s).
2. Since the smoke detector is not rated for use at velocities below 300 fpm (1.5 m/s), local code may require an alternate means of damper closure such as zone detection or automated damper closure when the system fan is shut down. The local authority having jurisdiction should be consulted prior to the installation of the damper and smoke detector.
3. Holes on sampling tube must face into airstream.
4. Smoke detector specifications are:
Operating temperature range: 32°F to 100°F
(0°C to 38°C)
Operating humidity range: 10% to 85% R.H.
Operation voltage: 24 VAC/DC or 120 VAC
Dimensions: 9 1/8 in. L x 7 1/4 in. W x 2 1/4 in. H
(232mm x 184mm x 57mm)
5. Refer to Hochiki Duct Smoke Detector installation instructions.
6. Hochiki America Corporation
7051 Village Drive Suite 100
Buena Park, CA 90621-2268
Phone: 714-522-2246
Fax: 714-522-2268
Technical Support: 1-800-845-6692 or techincalsupport@hochiki.com
Website: <http://www.hochiki.com>

WIRING DIAGRAMS

DH-98-P DUCT SMOKE DETECTOR

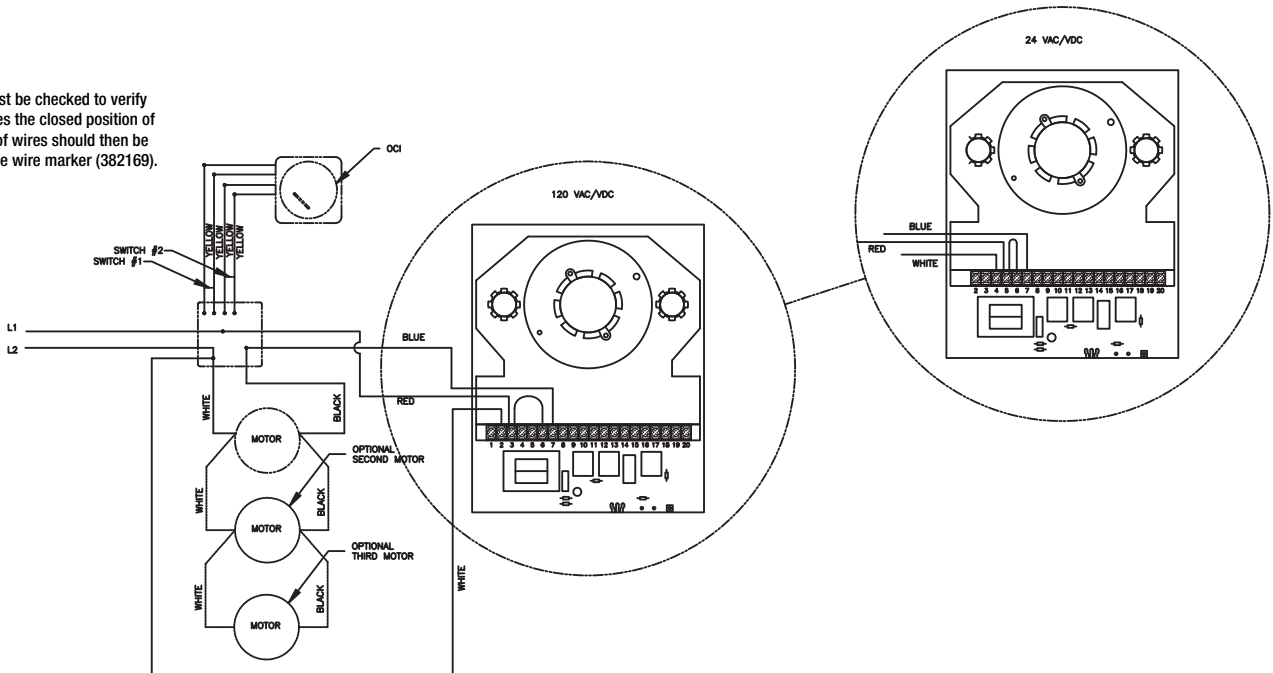
Fusible Link



1. CONDUIT RUNS WHICH EXCEED 72" MUST HAVE GREEN GROUND WIRE.
2. FLEX CONDUIT MUST BE SECURED WITH A CONDUIT CLAMP (458296) WITHIN 12" OF CONDUIT TERMINATION AT THE HAND-BOX OR ACTUATOR. CONDUIT RUNS MUST ALSO BE SECURED ALONG SLEEVE AT A MAXIMUM OF 24" ON CENTER.

OCI

The OCI wires must be checked to verify which set indicates the closed position of damper. This set of wires should then be labeled with a blue wire marker (382169).

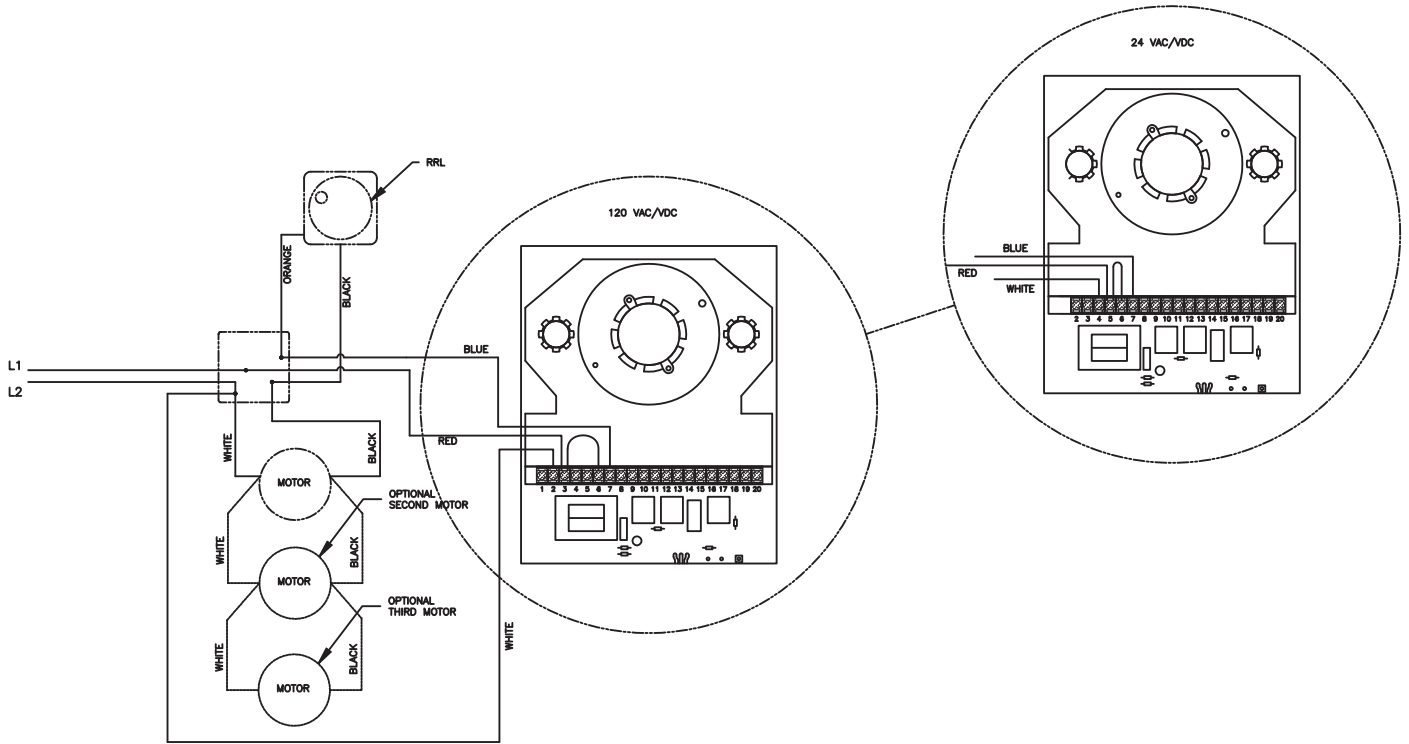


1. Conduit runs which exceed 72 in. must have green ground wire.
2. Flex conduit must be secured with a conduit clamp (458296) within 12 in. of conduit termination at the hand-box or actuator. Conduit runs must also be secured along sleeve at a maximum of 24 in. on center.

WIRING DIAGRAMS

DH-98-P DUCT SMOKE DETECTOR

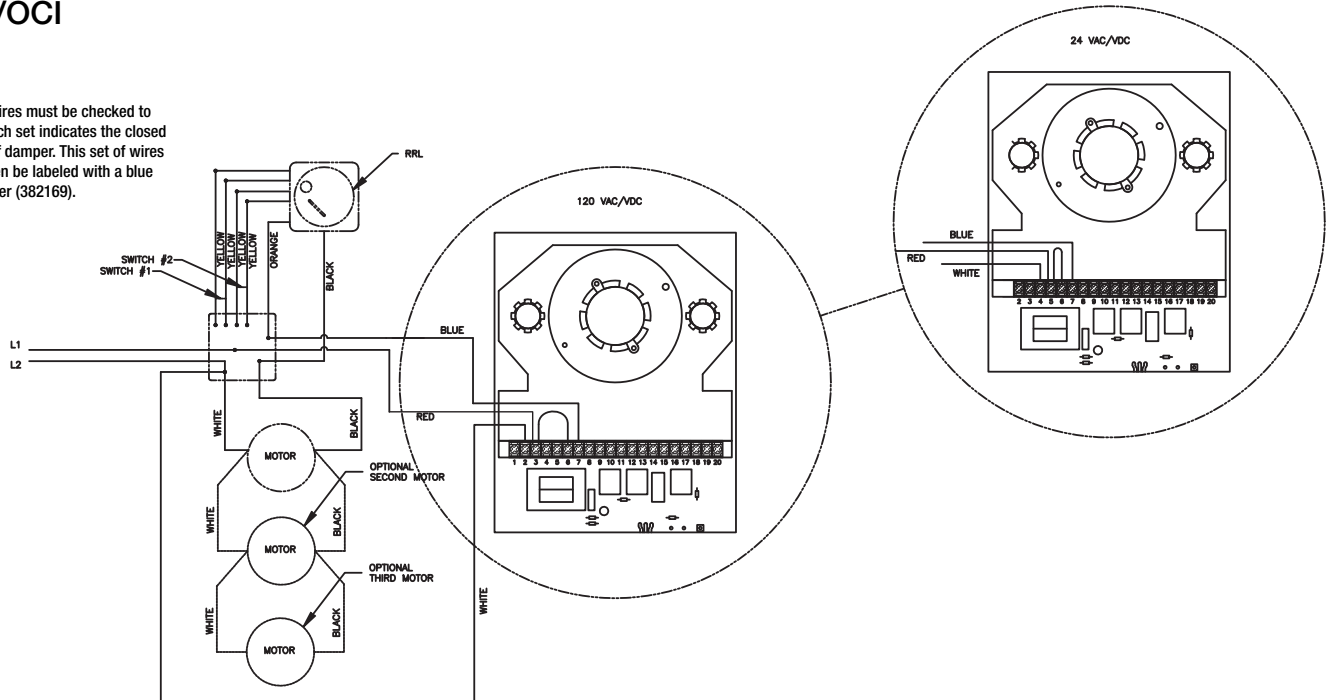
RRL



1. Conduit runs which exceed 72 in. must have green ground wire.
2. Flex conduit must be secured with a conduit clamp (458296) within 12 in. of conduit termination at the the handi-box or actuator. Conduit runs must also be secured along sleeve at a maximum of 24 in. on center.

RRL/OCI

The OCI wires must be checked to verify which set indicates the closed position of damper. This set of wires should then be labeled with a blue wire marker (382169).



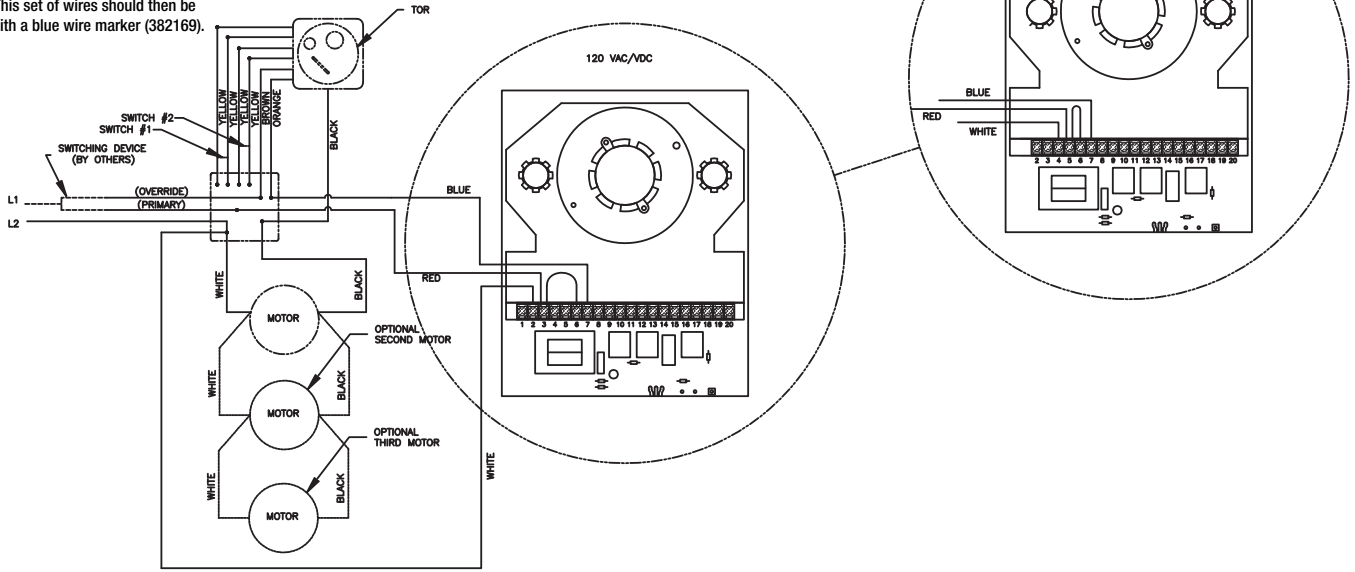
1. The conduit runs which exceed 72 in. must have green ground wire.
2. Flex conduit must be secured with a conduit clamp (458296) within 12 in. of conduit termination at the handi-box or actuator. Conduit runs must also be secured along sleeve at a maximum of 24 in. on center.

WIRING DIAGRAMS

DH-98-P DUCT SMOKE DETECTOR

TOR

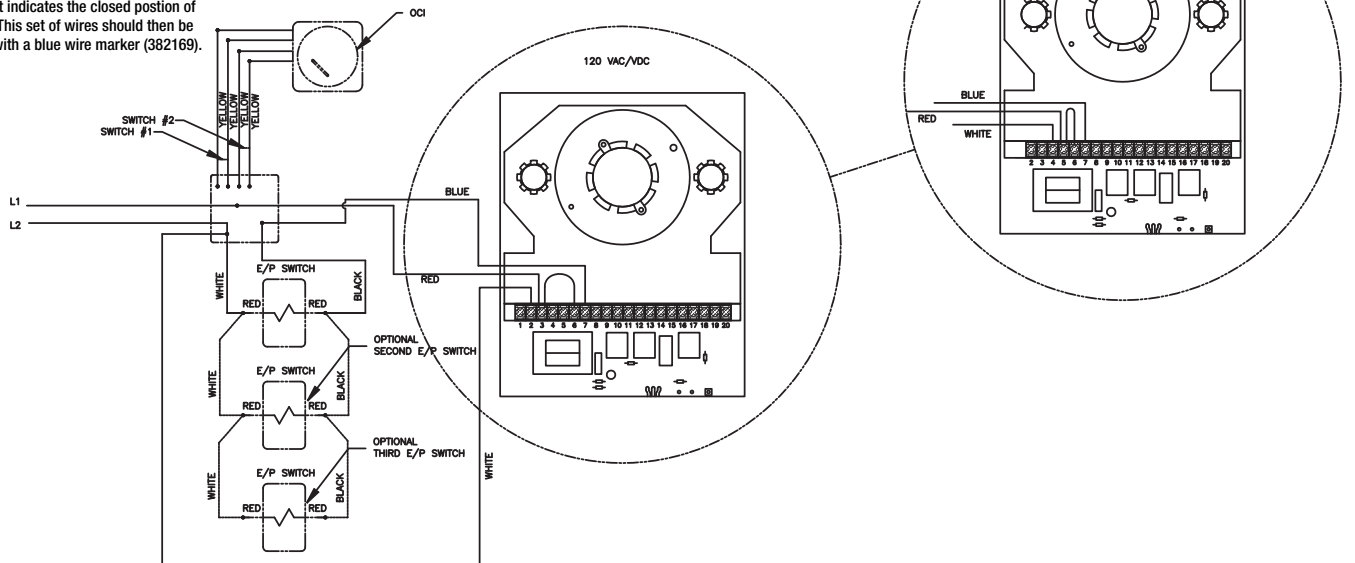
The OCI wires must be checked to verify which set indicates the closed position of damper. This set of wires should then be labeled with a blue wire marker (382169).



1. Conduit runs which exceed 72 in. must have green ground wire.
2. Flex conduit must be secured with a conduit clamp (458296) within 12 in. of conduit termination at the handi-box or actuator. Conduit runs must also be secured along sleeve at a maximum of 24 in. on center.

OCI w/ EP switch

The OCI wires must be checked to verify which set indicates the closed position of damper. This set of wires should then be labeled with a blue wire marker (382169).



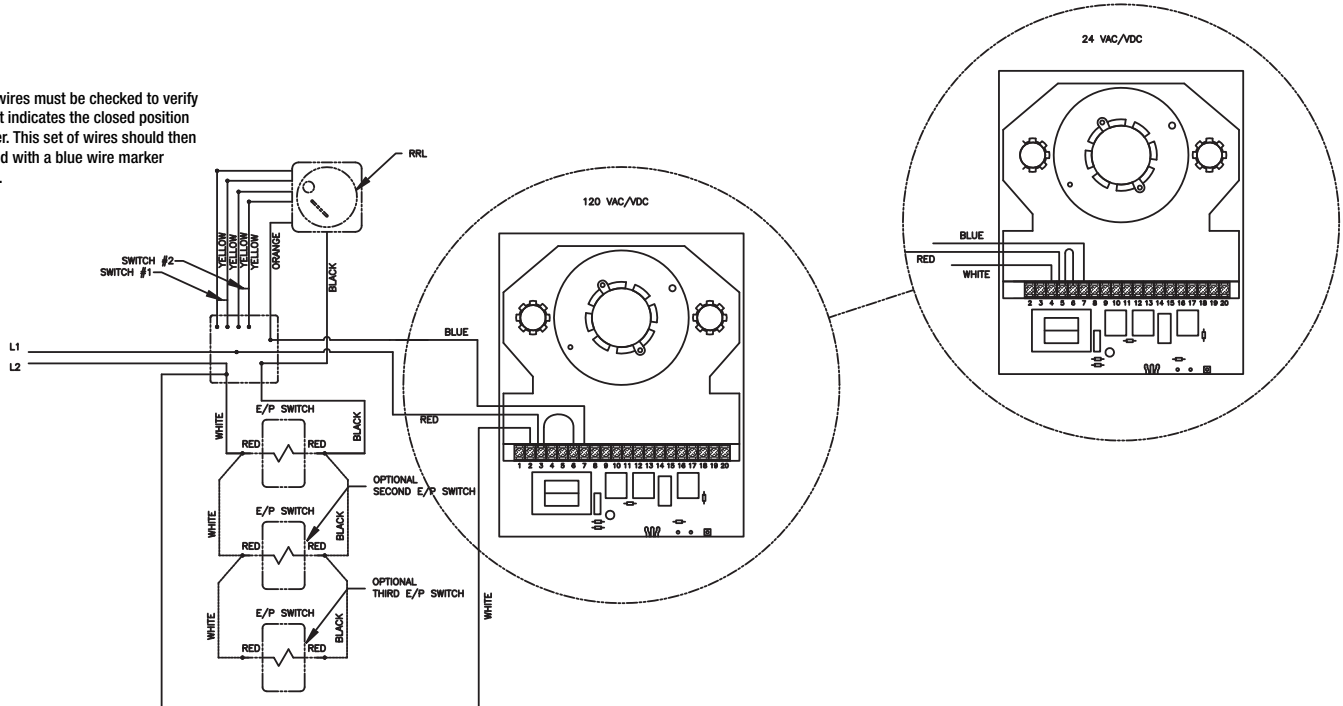
1. Conduit runs which exceed 72 in. must have green ground wire.
2. Flex conduit must be secured with a conduit clamp (458296) within 12 in. of conduit termination at the handi-box or actuator. Conduit runs must also be secured along sleeve at a maximum of 24 in. on center.

WIRING DIAGRAMS

DH-98-P DUCT SMOKE DETECTOR

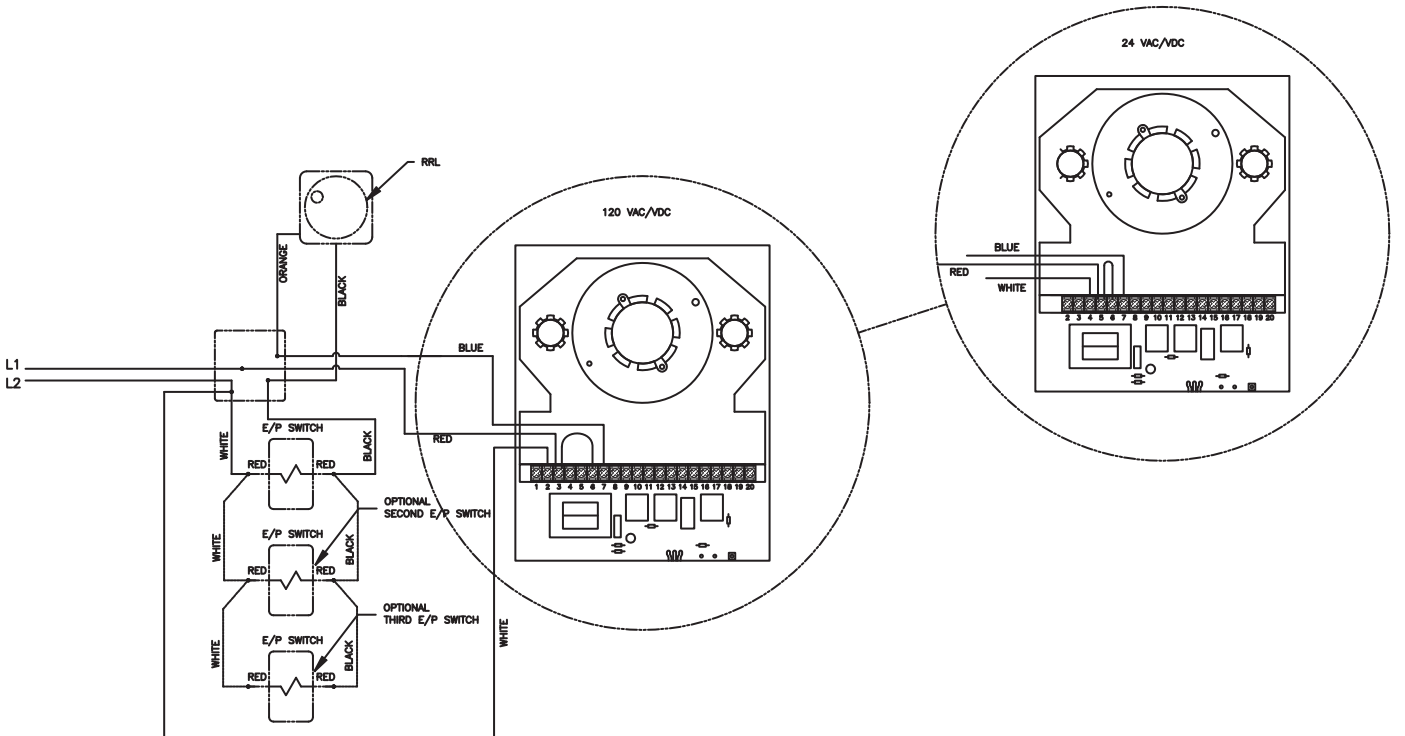
RRL/OCI w/ EP switch

The OCI wires must be checked to verify which set indicates the closed position of damper. This set of wires should then be labeled with a blue wire marker (382169).



1. Conduit runs which exceed 72 in. must have green ground wire.
2. Flex conduit must be secured with a conduit clamp (458296) within 12 in. of conduit termination at the handi-box or actuator. Conduit runs must also be secured along sleeve at a maximum of 24 in. on center.

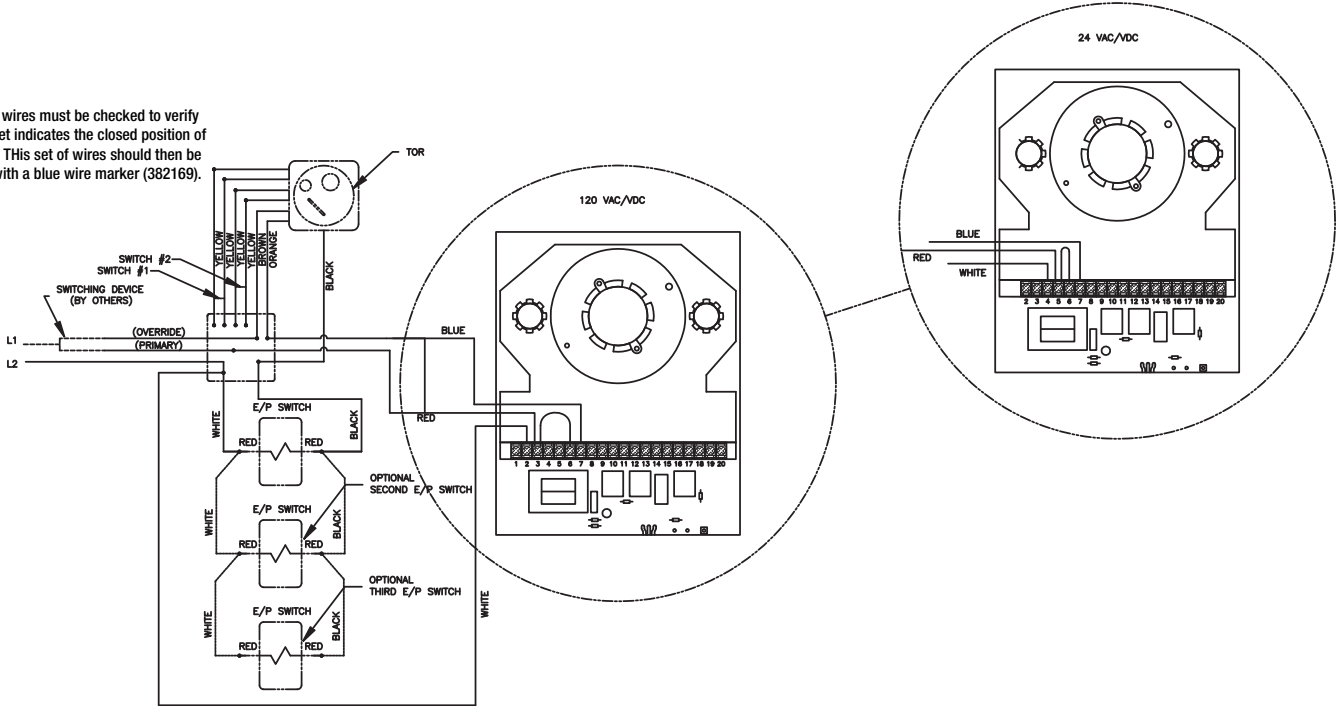
RRL w/ EP switch



1. Conduit runs which exceed 72 in. must have green ground wire.
2. Flex conduit must be secured with a conduit clamp (458296) within 12 in. of conduit termination at the handi-box or actuator. Conduit runs must also be secured along sleeve at a maximum of 24 in. on center.

TOR w/ EP switch

The OCI wires must be checked to verify which set indicates the closed position of damper. This set of wires should then be labeled with a blue wire marker (382169).



1. Conduit runs which exceed 72 in. must have green ground wire.
2. Flex conduit must be secured with a conduit clamp (458296) within 12 in. of conduit termination at the handi-box or actuator. Conduit runs must also be secured along sleeve at a maximum of 24 in. on center.

Figure 3: Label applied to dampers with factory mounted Hochiki duct smoke detectors.

Smoke detector requires 300 fpm minimum air velocity in duct. For damper activation requirements when system velocity is less than 300 fpm, the local authority having jurisdiction should be consulted.

Refer to smoke detector installation instructions and Greenheck IOM - Hochiki SmokeDetector Supplement for dampers with factory mounted duct smoke detectors.

