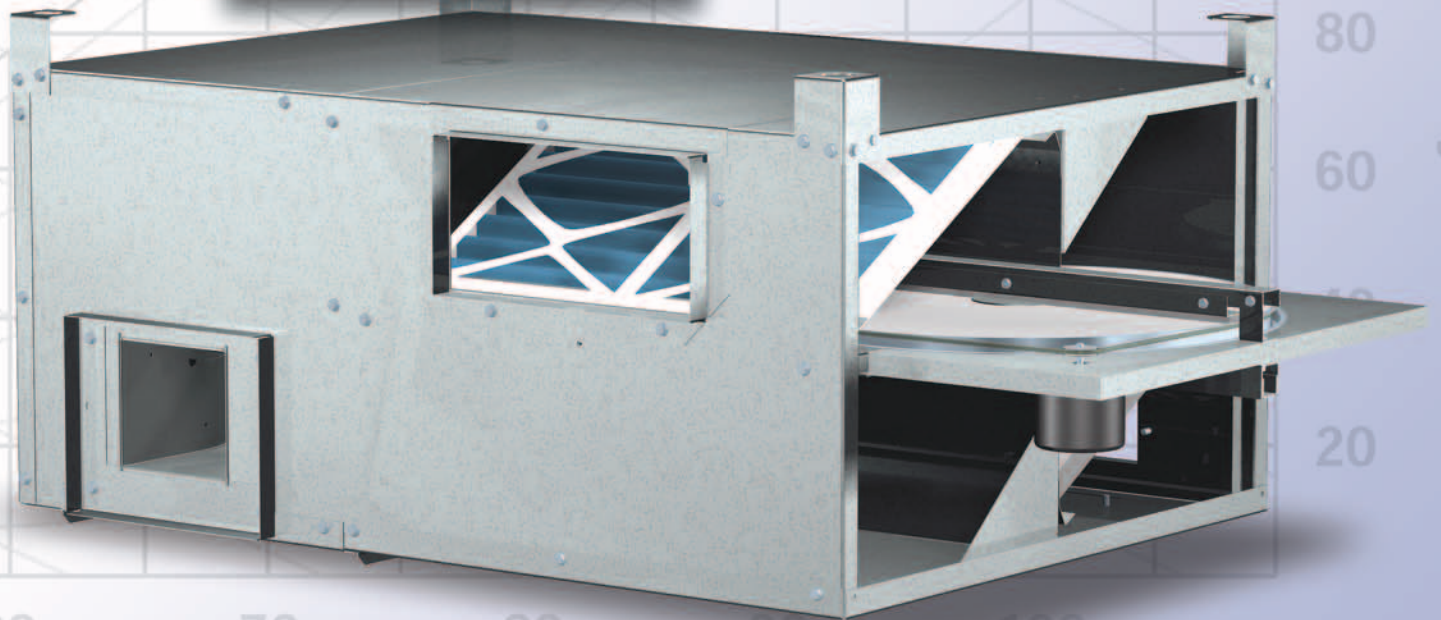


Energy Recovery Ventilator Model MiniVent

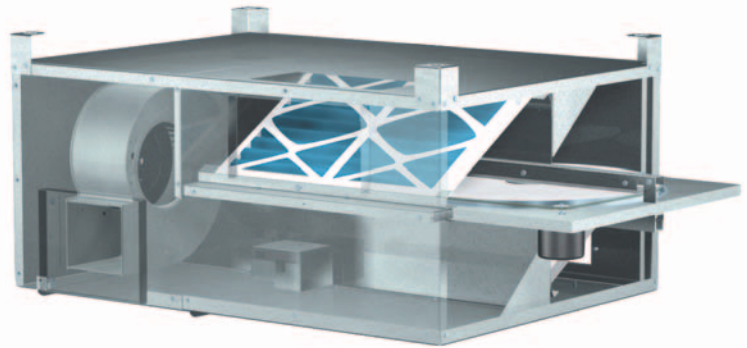
- Commercial
- Institutional

- 300 to 800 cfm
- Ideal for classroom ventilation



The MiniVent-450 & 750 are energy recovery ventilators used for commercial and institutional applications that require 300 cfm to 800 cfm of ventilation air. The compact design provides an economical solution for individual spaces, such as school classrooms and small offices.

The MiniVent is designed for indoor installations and may be floor mounted or ceiling hung. A removable panel enables easy access to filters and enthalpy wheel. Pleated 1-inch deep filters and backdraft dampers are standard.



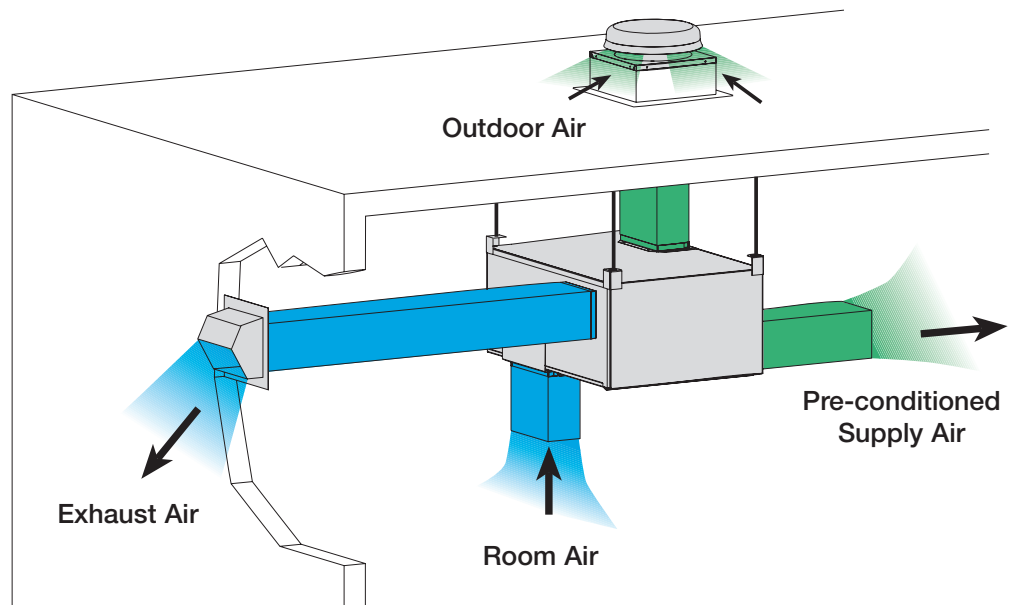
Energy recovery wheels certified by the ARI Air-to-Air Energy Recovery Ventilation Equipment Certification Program in accordance with ARI Standard 1060. Actual performance in packaged equipment may vary. Certified Ratings are available in the Certified Product Directory at <http://www.ari.org/directories/erv>

Typical Installation

The illustration shows a MiniVent in a typical ceiling hung installation.

Outdoor air is drawn through a model GRS roof mounted gravity intake hood and pre-conditioned by the enthalpy wheel. Outdoor air is then supplied either to an air handler or directly to the space. Energy is recovered from stale room air before it is exhausted through a model WC wall cap.

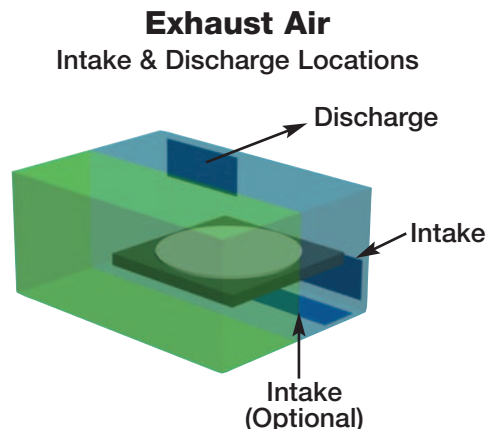
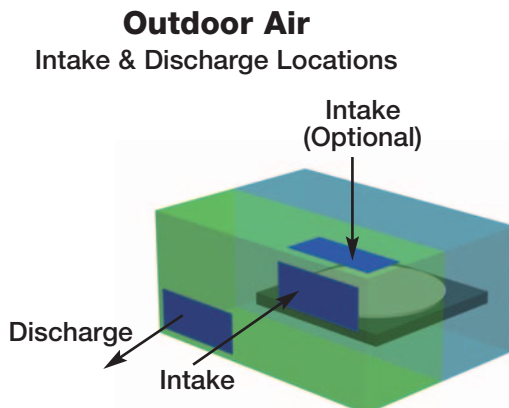
See opposite page for other intake and discharge accessories.



Intake and Discharge Locations

Outdoor air and exhaust air intake and discharge locations are shown.

Both intake locations are capable of being field relocated to suit installation needs (see optional locations).



Performance Data

MiniVent-450

Supply & Exhaust

Direct Drive

| RPM | | EXTERNAL STATIC PRESSURE (in. wg) | | | | | | | | * Sones @ 0.25 in. wg |
|------|-----|-----------------------------------|-------|-------|-------|-------|-------|-------|------|-----------------------|
| | | 0.125 | 0.250 | 0.375 | 0.500 | 0.625 | 0.750 | 0.875 | 1.00 | |
| 1250 | CFM | 386 | 362 | 335 | 300 | 245 | | | | 2.6 |
| 1680 | CFM | 542 | 512 | 480 | 442 | 402 | 352 | 294 | 227 | 3.6 |

MiniVent-750

Supply & Exhaust

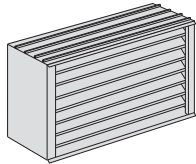
Direct Drive

| RPM | | EXTERNAL STATIC PRESSURE (in. wg) | | | | | | | | * Sones @ 0.25 in. wg |
|------|-----|-----------------------------------|-------|-------|-------|-------|-------|-------|------|-----------------------|
| | | 0.125 | 0.250 | 0.375 | 0.500 | 0.625 | 0.750 | 0.875 | 1.00 | |
| 1250 | CFM | 693 | 678 | 657 | 631 | 597 | 559 | 527 | 497 | 5.9 |
| 1550 | CFM | 865 | 854 | 842 | 825 | 807 | 785 | 761 | 731 | 6.5 |

* Some values are at a distance of 5 feet from the exhaust air intake.

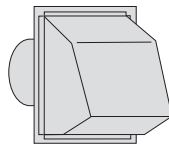
Intake and Exhaust Accessories

Wall Mounted



Model BV

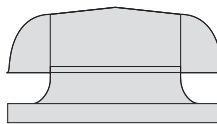
- Intake or exhaust
- Anodized aluminum construction
- Built in aluminum mesh insect screen



Model WC

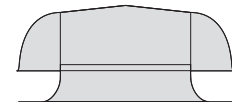
- Exhaust only
- Aluminum construction
- Built in damper

Roof Mounted



Model GRS

- Intake or exhaust
- All aluminum exterior construction
- Integral birdscreen
- For roof curb mounting



Model GRSF

- Intake or exhaust
- All aluminum exterior construction
- Integral birdscreen
- Built in flashing flange

Other Accessories

Speed Control

A solid state speed control is available for adjusting airflow to desired volume. One speed control is supplied for each outdoor air and exhaust air fan. Requires a 4x4 handy box by others.



Motion Detector - MiniVent-450 Only

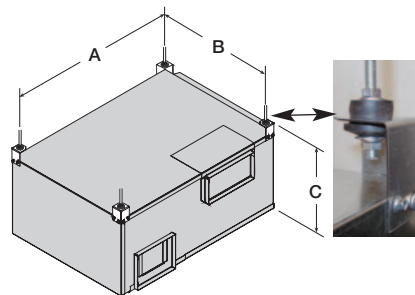
Model MBW is a wall mounted passive infrared motion detector that automatically turns on the MiniVent when a change in temperature is sensed. The MiniVent will automatically turn off after the room has been vacant past the adjustable time delay setting of 1 minute to 20 minutes. The detector must be installed in the line-of-sight of the subject personnel and requires a 2x4 handy box to be supplied by others.



Timed Exhaust Frost Control Kit

Timed Exhaust frost control kit includes an Outdoor Air Sensor and Timer for field installation. Timed Exhaust frost control turns the supply blower power off and on using field adjustable timer settings when outdoor air temperature falls below the frost threshold.

Timed Exhaust is appropriate for climates with limited HVAC system operation when outdoor air temperatures are below 0°F.



DIMENSIONS

| MiniVent Model | A | B | C |
|----------------|----|----|----|
| 450 | 40 | 29 | 20 |
| 750 | 46 | 36 | 22 |

All dimensions shown are in inches.

Hanging Vibration Isolators

Vibration isolator kits are available for suspended installations. Kits include all hardware necessary to mount one unit, with the exception of threaded rods to be supplied by others. Brackets for mounting vibration isolators are factory installed on the unit.

Typical Specifications

General:

Energy Recovery Ventilator shall be as manufactured by Greenheck or approved equal, provided all specifications are met. Units shall be listed per ANSI/UL 1995, Heating and Cooling Equipment. Energy transfer ratings of the energy recovery wheel shall be ARI Certified. Performance shall be as scheduled on plans.

Casing and Access:

Unit shall be constructed of G90 galvanized steel. All components shall be easily accessible through removable access panels. Access to filters and energy wheel shall not require tools. Energy recovery wheel shall be mounted in a slide-out track for ease of inspection, removal and cleaning. Housing shall be insulated with 1/2-inch insulation. Outdoor air and exhaust air discharges shall have integral backdraft dampers. Duct adapters shall be factory installed on all four intake/discharge ports.

Intake Locations:

Both the outdoor air and exhaust air intakes shall be designed for optional relocation in the field. Alternate intake location on adjacent side of the unit enables duct installation flexibility.

Energy Recovery Wheel:

Wheel shall be of the enthalpy type for both sensible and latent heat recovery, and be designed to insure laminar flow. Energy transfer ratings must be ARI Certified to Standard 1060 and bear the ARI certification symbol for ARI Air-to-Air Energy Recovery Ventilation Equipment Certification Program based on ARI 1060. Ratings "in accordance with 1060" without certification are not acceptable. Desiccant shall be silica gel for maximum latent energy transfer. Wheel shall be constructed of light weight polymer media to minimize shaft and bearing loads. Polymer media shall be mounted in a stainless steel rotor for corrosion resistance.

Silica gel desiccant shall be permanently bonded to wheel media to retain latent heat recovery after cleaning. Wheels with sprayed on desiccant coatings are not acceptable. Wheels with desiccant applied after wheel formation are not acceptable. Energy recovery device shall transfer moisture entirely in the vapor phase.

Energy recovery drive belt material shall be high strength urethane and shall be factory installed in a pre-stretched state, eliminating the need for field belt tension adjustment. Link style belts are not acceptable.

Fans and Motors:

Fans shall be double width, double inlet centrifugal forward curved type. Fans shall be statically and dynamically balanced. Fan motors shall be single phase, thermally protected and be compatible for use with speed controller.

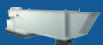
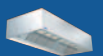
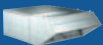
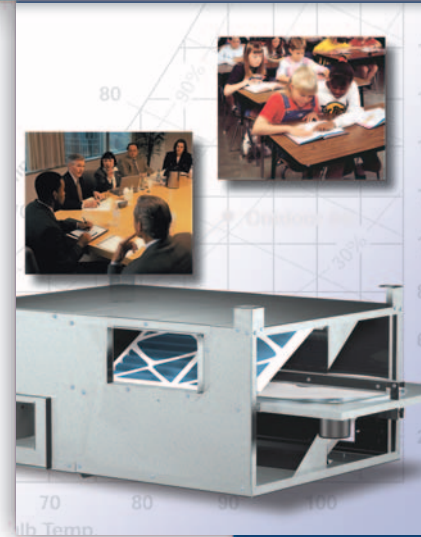
Filters:

The outdoor air shall be filtered with a 1-in. deep, 30% effective disposable filter. Filter rack shall be internal to the unit and factory installed.

Electrical:

All internal electrical components shall be factory wired for single point power connection. All electrical components shall be UL listed, approved or classified where applicable and wired in accordance with the National Electrical Code.

Ventilators shall be model MiniVent as manufactured by Greenheck, in Schofield, Wisconsin.



Our Warranty

Greenheck warrants this equipment to be free from defects in material and workmanship for a period of one year from the purchase date. The energy recovery wheel is warranted to be free from defects in material and workmanship for a period of five years from the purchase date. Any units or parts which prove defective during the warranty period will be replaced at our option when returned to our factory, transportation prepaid. Motors are warranted by the motor manufacturer for a period of one year. Should motors furnished by Greenheck prove defective during this period, they should be returned to the nearest authorized motor service station. Greenheck will not be responsible for any removal or installation costs.

As a result of our commitment to continuous improvement, Greenheck reserves the right to change specifications without notice.

Greenheck P.O. Box 410 • Schofield, WI 54476-0410 • Phone (715) 359-6171 • greenheck.com