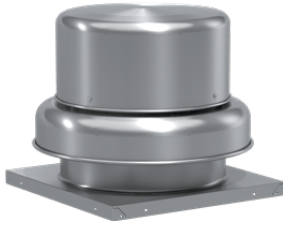




SKU  
GB-140-LMD122XQD

Job Name:  
Mark:  
Submitted By:  
Date: 06/25/2025

## Centrifugal Downblast Exhaust Fan, Product # GB-140-LMD122XQD, 751-3209 CFM

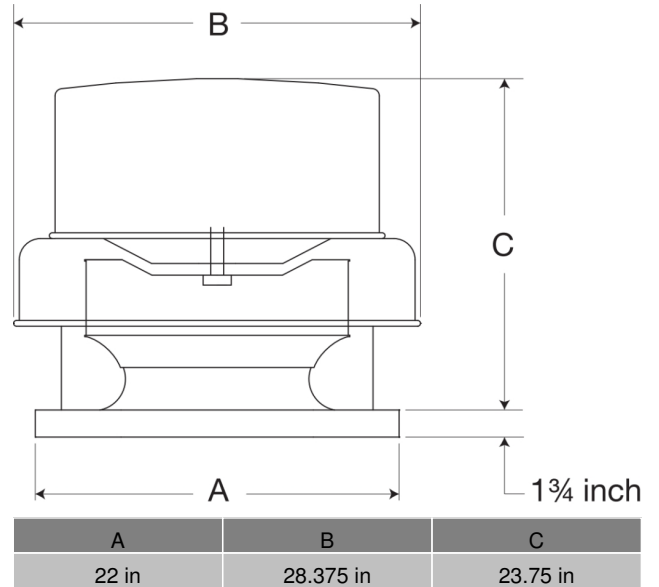


Model GB, belt drive centrifugal roof exhaust fans are designed to meet the general clean air exhaust requirements for industrial and commercial buildings. Units feature a fully rolled windband bead for increased stability and easy transport. Fresh outside air is drawn in under the motor cover to maximize motor life.

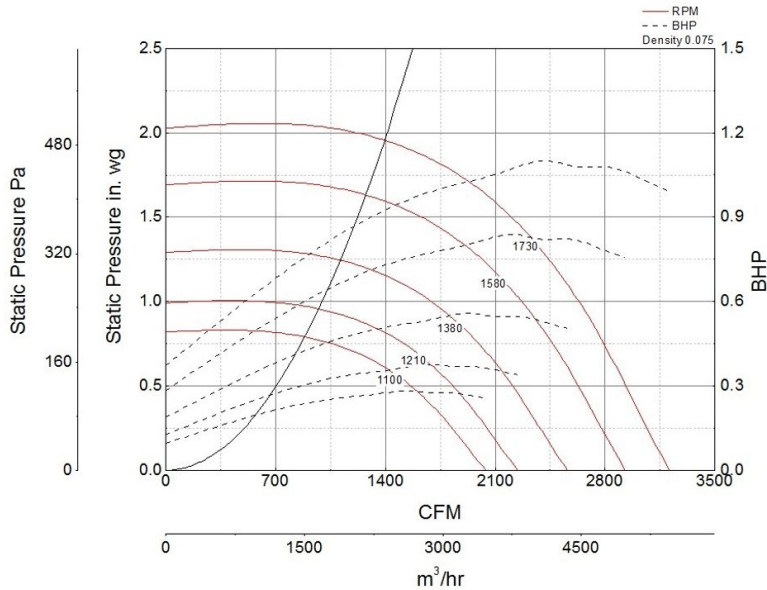
- 22 x 22 inch base with prepunched mounting holes for easy attachment to roof curb
- Multiple motor and drive options available to meet any performance and application need
- 18.5 x 18.5 inch recommended roof opening

### Certifications

AMCA Sound & Air  
High Wind and Hurricane  
Seismic  
UL/cUL 705



### Performance Characteristics



Note: The maximum FRPM for each motor horsepower is shown. For additional performance ranges available for this fan, refer to the performance table.

### Construction Features

Housing Material	Spun Aluminum
Drive Type	Belt Drive
Impeller Type	Centrifugal Wheel
Impeller Material	Aluminum
Certifications	AMCA Sound & Air High Wind and Hurricane Seismic UL/cUL 705
Drive Package Description	No drive package included
Required Accessory	Roof curb for new installations

### Motor Information

Motor Included	No
----------------	----

## Air and Sound Performance

Motor HP	Max BHP	Max Fan RPM	Min Fan RPM	Ps (in. wg)	0	0.125	0.25	0.375	0.5	0.625	0.75	0.875	1	1.25	1.5	1.75
1/4	0.04	570	520	CFM	1,057	830	-	-	-	-	-	-	-	-	-	-
				Sones	4.8	4.8	-	-	-	-	-	-	-	-	-	-
1/4	0.07	710	570	CFM	1,317	1,148	909	-	-	-	-	-	-	-	-	-
				Sones	5.9	5.9	5.2	-	-	-	-	-	-	-	-	-
1/4	0.14	880	710	CFM	1,632	1,497	1,349	1,143	-	-	-	-	-	-	-	-
				Sones	7.4	7.4	7	6.5	-	-	-	-	-	-	-	-
1/4	0.28	1100	880	CFM	2,041	1,931	1,823	1,703	1,560	1,366	999	-	-	-	-	-
				Sones	10.6	10.4	9.9	9.4	9	8.4	7.7	-	-	-	-	-
1/3	0.05	630	540	CFM	1,169	972	-	-	-	-	-	-	-	-	-	-
				Sones	5.2	5.3	-	-	-	-	-	-	-	-	-	-
1/3	0.10	780	630	CFM	1,447	1,293	1,109	751	-	-	-	-	-	-	-	-
				Sones	6.5	6.5	6	6.1	-	-	-	-	-	-	-	-
1/3	0.19	970	780	CFM	1,799	1,676	1,550	1,395	1,167	-	-	-	-	-	-	-
				Sones	8.5	8.4	8	7.5	7	-	-	-	-	-	-	-
1/3	0.37	1210	970	CFM	2,245	2,144	2,048	1,946	1,830	1,689	1,515	1,242	-	-	-	-
				Sones	12.3	12.1	11.6	11.1	1.6	10.2	9.7	9	-	-	-	-
1/2	0.04	580	530	CFM	1,076	855	-	-	-	-	-	-	-	-	-	-
				Sones	4.9	4.9	-	-	-	-	-	-	-	-	-	-
1/2	0.08	720	580	CFM	1,336	1,169	938	-	-	-	-	-	-	-	-	-
				Sones	5.9	6	5.3	-	-	-	-	-	-	-	-	-
1/2	0.15	890	720	CFM	1,651	1,517	1,372	1,173	-	-	-	-	-	-	-	-
				Sones	7.5	7.5	7.1	6.6	-	-	-	-	-	-	-	-
1/2	0.29	1110	890	CFM	2,059	1,950	1,844	1,725	1,585	1,399	1,107	-	-	-	-	-
				Sones	10.8	10.6	10.1	9.6	9.1	8.6	8	-	-	-	-	-
1/2	0.56	1380	1110	CFM	2,560	2,472	2,386	2,300	2,210	2,108	1,993	1,850	1,683	-	-	-
				Sones	15.4	15	14.6	14.1	13.6	13.2	12.7	12.2	11.7	-	-	-
3/4	0.43	1270	1060	CFM	2,356	2,260	2,168	2,072	1,966	1,845	1,691	1,490	1,150	-	-	-
				Sones	13.3	13	12.6	12.1	11.6	11.1	10.6	10.1	9.3	-	-	-
3/4	0.83	1580	1270	CFM	2,931	2,854	2,778	2,704	2,628	2,550	2,463	2,372	2,268	2,009	1,609	-
				Sones	18.3	18.6	17.7	17.5	17.3	16.6	15.7	15.3	15.2	15.1	15.1	-
1	0.57	1390	1180	CFM	2,579	2,491	2,406	2,321	2,232	2,131	2,018	1,879	1,723	-	-	-
				Sones	15.6	15.2	14.8	14.4	13.8	13.4	12.9	12.4	12	-	-	-
1	1.10	1730	1390	CFM	3,209	3,139	3,069	3,001	2,934	2,863	2,792	2,713	2,631	2,441	2,199	1,836
				Sones	21	21	20	20	19.7	19.3	18.5	17.7	17.3	17	16.9	16.7



- Greenheck Fan Corporation certifies that the model shown herein is licensed to bear the AMCA Seal. The ratings shown are based on tests and procedures performed in accordance with AMCA Publication 211 and AMCA Publication 311 and comply with the requirements of the AMCA Certified Ratings Program.
- Performance certified is for installation type A: Free inlet, Free outlet.
- Power rating (BHP/kW) includes transmission losses.
- Performance ratings include the effects of birdscreen.
- The sound ratings shown are loudness values in fan sones at 5 ft. (1.5 m) in a hemispherical free field calculated per AMCA Standard 301. Values shown are for installation type A: free inlet hemispherical sone levels.

## California Residents

### ⚠ WARNING

This product can expose you to chemicals including cadmium used in the processing of corrosion resistant metal and fasteners, which is known to the State of California to cause cancer and birth defects or other reproductive harm. For more information visit [www.P65Warnings.ca.gov](http://www.P65Warnings.ca.gov)