

Application and Design

Greenheck Tube Grilles are custom designed and manufactured to function as architectural accents or as entire facades to prevent sight or serve as solar screens or security barriers. Tube Grilles are 2 in. (50.8 mm) deep and incorporate parallelogram blades configured from a minimum of 2 in. (50.8 mm) to maximum 12 in. (304.8 mm) center spacing to achieve desired sightlines. In addition, the vertical members may be spaced from minimum 9 in. (228.6 mm) to maximum 48 in. (1,219.2 mm) on center as determined by the designer.

Standard Construction

Material Extruded Aluminum, Alloy 6063T5
 Parallelogram Blade Thickness .0.073 in. (1.85 mm)
 Vertical Bar Thickness0.081 to 0.125 in. (2.06 to 3.18 mm)
 Grille Depth2 in. (50.8 mm)
 Perimeter Frame Aluminum bar, Channel or Tube
 Parallelogram Blade Angle . . .37°
 Horizontal Bar Spacing2 to 12 in. (50.8 to 304.8 mm)
 Vertical Bar Spacing.9 to 48 in. (228.6 to 1219 mm)
 Minimum Dimension10 in. (254 mm)
 Maximum Dimension120 in. (3048 mm)

One dimension not to exceed 72 in.

Options (at additional cost)

- A variety of bird and insect screens
- Anchor clips
- A variety of architectural finishes including:
 - Clear anodize
 - Integral color anodize
 - Baked enamel paint
 - Kynar paint

Recommended Specifications

General

Where indicated on plan drawings or described in schedules, furnish and install Tube Grilles as designed and manufactured by Greenheck Fan Corporation, Schofield, WI. Grilles shall be furnished in the configurations represented on the plan drawings and shall include installation hardware and finishes as specified and required for a complete installation.

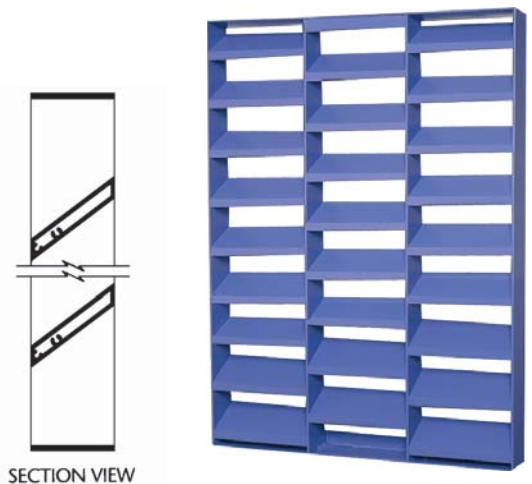
Welded Assembly

All horizontal, vertical and perimeter frame members shall be joined with slotted or tabbed connections. Where possible, connections shall be secured with fillet welds concealed from view, unless the size of the grille makes bolted connections between grille sections necessary. Each weld shall be manufactured with the Pulsed Gas Metal Arc Welding (GMAW Mig) process. Intermediate connections shall be intermittently joined with a 1 in. (25.4 mm) long fillet weld with a minimum 3/16 in. (4.76 mm) leg. Frames shall be joined at each corner with a full-length GMAW fillet weld with a minimum 3/16 in. (4.76 mm) throat.

Products

Architectural grilles shall be Aiolite Tube Grilles as follows:

- Material: Extruded Aluminum, Alloy 6063T5
- Parallelogram Blade Thickness: 0.073 in. (1.85 mm)
- Vertical Bar Thickness: 0.081 in. (2.06 mm) to 0.125 in. (3.18 mm), or as indicated.
- Grille Depth: 2 in. (50.8 mm)
- Perimeter Frame: Specify Aluminum Bar, Channel or Tube, or as indicated.
- Parallelogram Blade Angle: 37-degrees
- Parallelogram Blade Spacing: Specify Minimum 2 in. (50.8 mm) to Maximum 12 in. (304.8 mm), or as indicated.
- Vertical Bar Spacing: Minimum 9 in. (228.6 mm) to Maximum 48 in. (1,219.2 mm), or as indicated.



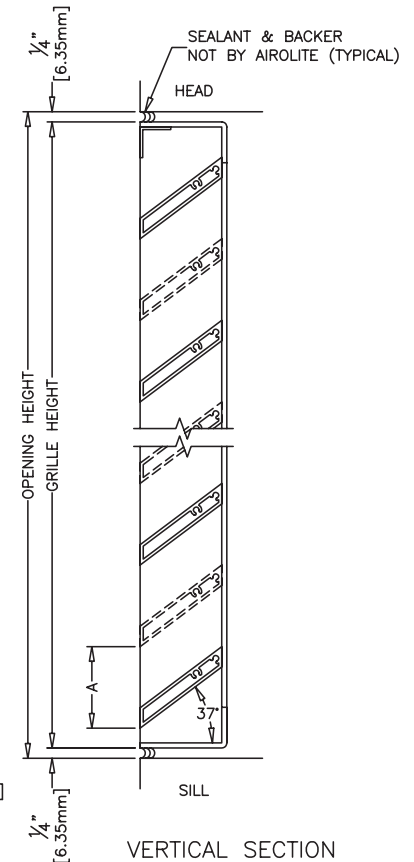
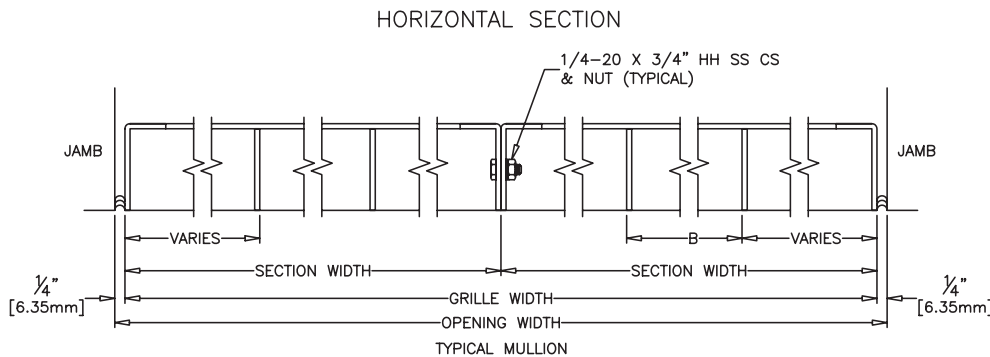
DETAIL DRAWINGS

A - Parallelogram Blade Spacing

Specify horizontal members on minimum 2 in. (50.8 mm) to maximum 12 in. (304.8 mm) center spacing.

B - Vertical Bar Spacing

Specify vertical members on minimum 9 in. (228.6 mm) to maximum 48 in. (1,219.2 mm) center spacing.



FINISHES

Finish Type	Description/Application	Color Selection	Standard Warranty (Aluminum)
2-coat 70% KYNAR 500®/HYLAR 5000® AAMA 2605 – Dry film thickness 1.2 mil. (AKA: Duranar®, Fluoropon®, Trinar®, Flouropolymer, Polyvinylidene Fluoride, PVDF2)	“Best.” The premier finish for extruded aluminum. Tough, long-lasting coating has superior color retention and abrasive properties. Resists chalking, fading, chemical abrasion and weathering.	Standard Colors: Any of the 24 standard colors shown can be furnished in 70% or 50% KYNAR 500®/HYLAR 5000® or Baked Enamel.	10 Years (Consult Greenheck for availability of extended warranty)
2-coat 50% KYNAR 500®/HYLAR 5000® AAMA 2604 – Dry film thickness 1.2 mil. (AKA: Acroflur®, Acrynar®)	“Better.” Tough, long-lasting coating has excellent color retention and abrasive properties. Resists chalking, fading, chemical abrasion and weathering.	2-Coat Mica: Greenheck offers 9 standard 2-coat Mica colors. Other colors are available. Consult Greenheck for possible extra cost when selecting non-standard colors or special finishes.	5 Years
Baked Enamel AAMA 2603 – Dry film thickness 0.8 mil. (AKA: Acrabond Plus®, Duracron®)	“Good.” Provides good adhesion and resistance to weathering, corrosion and chemical stain.	Light, Medium or Dark Bronze; Champagne; Black	1 Year
Integral Color Anodize AA-M10C22A42 (>0.7 mil)	“Two-step” anodizing is produced by following the normal anodizing step with a second, colorfast process.	Light, Medium or Dark Bronze; Champagne; Black	5 years
Clear Anodize 215 R-1 AA-M10C22A41 (>0.7 mil)	Clear, colorless and hard oxide aluminum coating that resists weathering and chemical attack.	Clear	5 years
Clear Anodize 204 R-1 AA-M10C22A31 (0.4-0.7 mil)	Clear, colorless and hard oxide aluminum coating that resists weathering and chemical attack.	Clear	1 Year
Industrial coatings	Greenheck offers a number of industrial coatings such as Hi-Pro Polyester, Epoxy, and Permatector®. Consult a Greenheck Product Specialist for complete color and application information.		Consult Greenheck
Mill	Materials may be supplied in natural aluminum or galvanized steel finish when normal weathering is acceptable and there is no concern for color or color change.		n/a

Finishes meet or exceed AAMA 2605, AAMA 2604, and AAMA 2603 requirements. Please consult www.greenheck.com for complete information on standard and extended paint warranties. Paint finish warranties are not applicable to steel products.



Tube Grille March 2007
Copyright © 2007 Greenheck Fan Corporation

Greenheck Fan Corporation reserves the right to make product changes without notice.