

## Sure 100

Optional Manual Override Available



### NEMA 4/6/7 Enclosure

#### Approvals

#### A.C. Models Only

Canadian Standards Association

CSA NRTL/C—Enclosure 4 and 6

CSA NRTL/C—Class I, Divisions 1 & 2, Groups C & D

CSA NRTL/C—Class II, Divisions 1 & 2, Groups E, F & G

CSA NRTL/C—Approved to UL standard No. 429, Electrically Operated Valves

CSA NRTL/C—Approved to UL Standard No. 1203, Electrical Equipment for use in Explosion - proof And Dust - Ignition - proof Hazardous (Classified) Locations

### Models

**SURE100**

### Typical Application

For on/off and modulating control of:

- Part turn ball, butterfly, plug valves or rotary dampers when emergency shutdown or shutoff capability is required in the event of a loss of power.



### Temperature Range

Standard: -40°F to +150°F  
-40°C to +65°C

Optional: -60°F to +150°F  
-50°C to +65°C

Optional:  
Compliance to NFPA 130, capable of operation after exposure to ambient temperature of 482°F (250°C) for a minimum of 1 hour.



### Voltage

115 VAC, 1 Phase, 50/60 Hz.  
230 VAC, 1 Phase, 50/60 Hz.



### Torque Range

1200 pound inches spring end  
(136 newton meters)



### Speed Range

10 & 30 seconds for 90° revolution, motor operation

5 to 7 seconds, spring operation

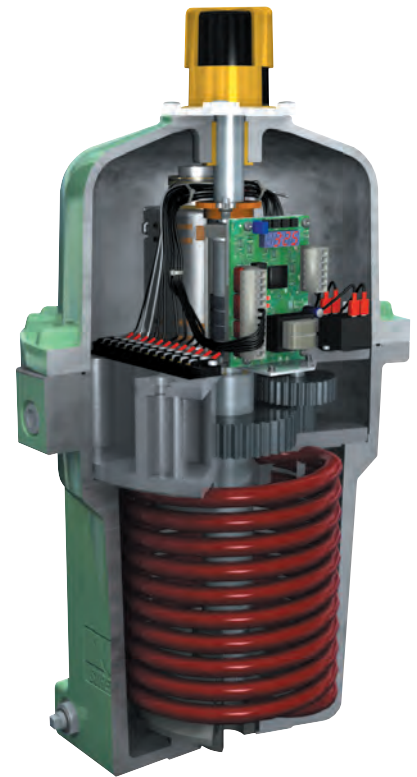


### Spring

Helical torsion spring, spring steel, XYLAN® coated

### Special Features

AC Voltages  
4 – SPDT Switches, PTC Heater, Motor Brake



## 115 & 230 VAC, 1 Phase, 50/60 Hz.

SUREPOWER	Model	Output Torque Inch Pounds (N.m)	Electrical Speed of Operation — 60 Hz. (50 Hz.)	Spring Speed of Operation	Duty Cycle Rating 115 VAC	Duty Cycle Rating 220 VAC	Current Ratings 115 VAC		Current Ratings 220 VAC	
							N.L.A.*	L.R.A.*	N.L.A.*	L.R.A.*
							Sure 25-5	300 (34)	5 seconds/90° (6 seconds/90°)	2 seconds/90°
Sure 25-10	300 (34)	10 seconds/90° (12 seconds/90°)	2 seconds/90°	50% (2)	50% (2)	1.00	1.55	CF**	CF**	
Sure 24-10	300 (34)	10 seconds/90° (12 seconds/90°)	2 seconds/90°	25% (1)	25% (1)	.70	1.05	.45	.65	
Sure 49-5	600 (68)	5 seconds/90° (6 seconds/90°)	2 seconds/90°	25% (1)	25% (1)	1.10	1.80	1.00	1.20	
Sure 49-15	600 (68)	15 seconds/90° (18 seconds/90°)	2 seconds/90°	25% (1)	25% (1)	.55	1.55	.35	.90	
Sure 49-30	600 (68)	30 seconds/90° (35 seconds/90°)	2 seconds/90°	50% (2)	50% (2)	.65	.70	.30	.35	
Sure 100-10	1,200 (136)	10 seconds/90° (12 seconds/90°)	5 seconds/90° (max) +	25% (1)	25% (1)	1.90	2.90	.90	1.35	
Sure 100-30	1,200 (136)	30 seconds/90° (35 seconds/90°)	7 seconds/90° (max) +	50% (2)	50% (2)	.65	.95	.35	.45	

\* (N.L.A.) — No Load Ampere (L.R.A.) — Locked Rotor Ampere (1) — Open/Close Service (2) — Open/Close or Modulating Service  
 \*\* (CF) — Consult Factory + — Approximate, Based on Load

## 24 VAC

SUREPOWER	Model	Output Torque Inch Pounds (N.m)	Electrical Speed of Operation — 60 Hz. (50 Hz.)	Spring Speed of Operation	Duty Cycle Rating 24 VAC	Current Ratings 24 VAC	
						N.L.A.*	L.R.A.*
						Sure 49-30	600 (68)

## 24 VDC

SUREPOWER	Model	Output Torque Inch Pounds (N.m)	Electrical Speed of Operation — 60 Hz. (50 Hz.)	Spring Speed of Operation	Duty Cycle Rating 115 VAC	Duty Cycle Rating 230 VAC	Current Ratings 12 VDC		Current Ratings 24 VDC	
							N.L.A.*	L.R.A.*	N.L.A.*	L.R.A.*
							Sure 49-5	600 (68)	5 seconds/90° (6 seconds/90°)	2 seconds/90°

### Limit Switches (Sure 24 & 25)

**Standard:** Two-single pole, double throw type (SPDT) with an option: for 2 or 4 additional

### Limit Switches (24 VDC Models)

**Ratings:** UL and CSA listed.  
 MIL-PRF-8805 Qualified Listing  
 25 amp at 277 VAC; 1 H.P. at 125 VAC;  
 2 H.P. at 250 VAC

### Isolation Relays

To operate multiple actuators in parallel from a single signal requires isolating relays in the field wiring. Consult factory.

### Industrial Products Group Dresser, Inc.

16240 Port Northwest Drive  
 Houston, Texas 77041-2645 USA  
 Ph: 832.590.2306  
 Toll Free Phone: 800.945.9898

Fax: 713.849.2879  
 Email: rcs@dresser.com, andco@dresser.com

### Limit Switches (Sure 49 & 100)

**Standard:** Four-single pole, double throw type (SPDT) with an option: for 2 additional

**Ratings:** UL and CSA listed.  
 15 amp & 1/2 H.P. at 125 or 250 VAC;  
 1/2 amp at 125 VDC; 1/4 amp at 250 VDC;  
 Lamp Load - 5 amp at 120 VAC

**Optional:** All double pole, double throw type (DPDT).

**Ratings:** UL and CSA listed.  
 10 amp at 125/250 VAC (form ZZ);  
 1/2 H.P. at 125 VDC; 3/4 H.P. at 250 VAC

### Heater

PTC (Positive Temperature Coefficient)  
 Heater Standard in all A. C. Voltage Models

### Duty Cycle

The percentage of time the electric motor is energized vs. the time it is at rest, in reversing duty and with the actuator running at it's rated load - maximum published torque.

### Standard Modulating Duty Rating

- 12 motor starts (corrections) per minute.
- At the rated duty cycle for that model.
- With the speed of operation a minimum of 15 seconds for 90° or slower.
- With positioning accuracy of (+/-) 1% of total span.



www.dresser.com