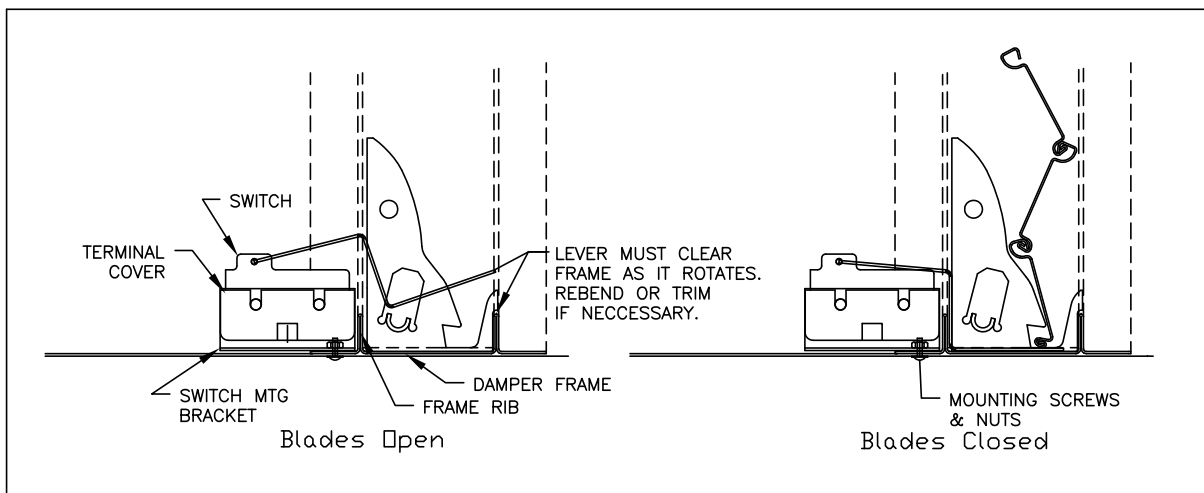


The close indicator switch is a high sensitivity hinge lever style used on curtain fire dampers. When the damper blades close, the close indicator switch sends a signal that the damper is close.

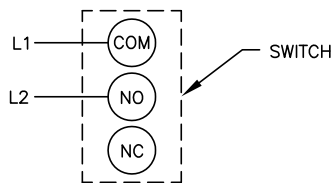


Rated Current	15A
Switch Type	Single Pole, Double Throw Type
Operating Temperature	-13°F to 176°F -25°C to 80°C
Applicable Standard (UL)	UL508 File # E41515

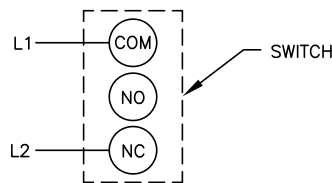


WIRING DIAGRAMS

SYSTEMS REQUIRING INDICATION WHEN DAMPER IS CLOSED



SYSTEMS REQUIRING INDICATION WHEN DAMPER IS OPEN



SYSTEMS REQUIRING INDICATION OF BOTH POSITIONS

