

Fabricated Steel Sand Louver Sightproof Blade

Application and Design

FSL-401 is a sand louver designed to protect air intake and exhaust openings in building exterior walls from wind-driven sand. Design incorporates vertical sightproof blades to separate sand from the air stream which is then channeled out at the sloped sill. The FSL-401 is not intended as a substitute for conventional air filters.



Standard Construction

Frame 4 in. x 18 gauge galvanized steel

Blades Vertical sightproof style, 18 gauge galvanized steel wall thickness, positioned on approximately 4 in. centers

Construction . . . Mechanically fastened

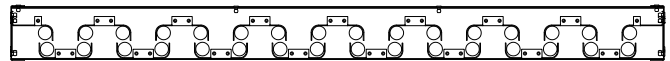
Birdscreen ½ in. x ½ in. mesh 19 gauge galvanized steel in removable frame, inside mount (rear)

Finish Mill

Minimum Size . . 12 in. W x 12 in. H

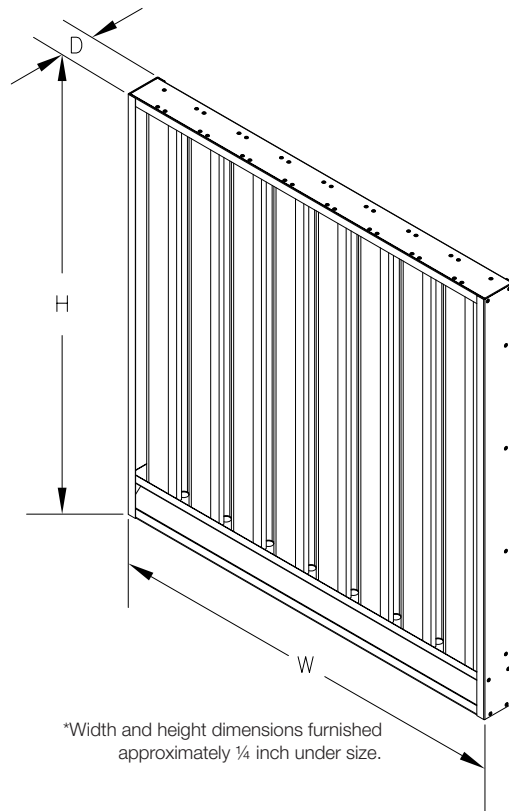
Maximum Single

Section Size . . . 60 in. W x 96 in. H or 96 in. W x 60 in. H
(limited to 40 sq. ft.)



Options (at additional cost)

- A variety of bird and insect screens
- Aluminum construction-limited to 60 in. High
- Blank off panel
- Clip angles
- Extended sill
- Filter rack
- Flanged frame
- Heavier gauge blade and frame construction
- Hinged frame
- Security Bars
- Welded construction
- A variety of architectural finishes including:
 - Baked enamel paint
 - Kynar paint



PERFORMANCE DATA

FSL-401

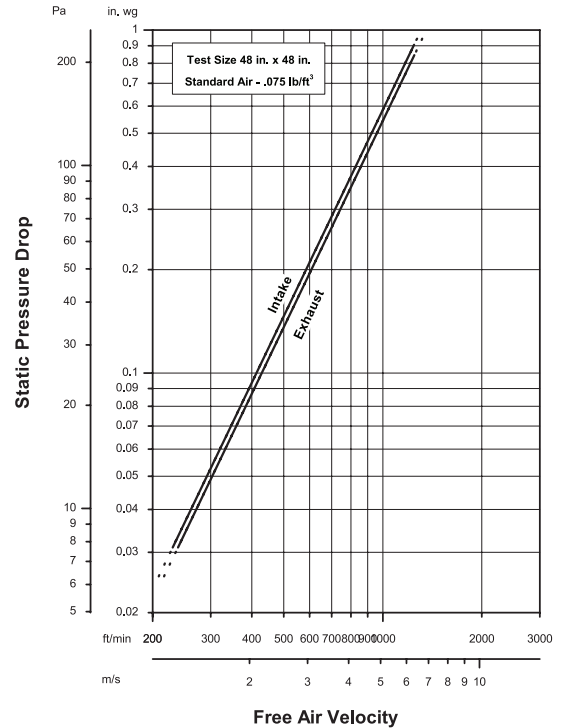
Fabricated Steel Sand Louver
Sightproof Blade

Free Area Chart (Sq. ft.)


Height (in)*	Width (in)*														
	12	18	24	30	36	42	48	54	60	66	72	78	84	90	96
12	0.10	0.18	0.27	0.35	0.43	0.52	0.59	0.66	0.74	0.81	0.88	0.96	1.03	1.10	1.18
18	0.21	0.38	0.55	0.72	0.89	1.05	1.20	1.35	1.50	1.65	1.81	1.96	2.11	2.26	2.41
24	0.32	0.57	0.83	1.08	1.34	1.59	1.82	2.05	2.27	2.50	2.73	2.95	3.18	3.41	3.63
30	0.43	0.76	1.10	1.45	1.79	2.13	2.43	2.74	3.04	3.35	3.65	3.95	4.26	4.56	4.86
36	0.53	0.96	1.38	1.81	2.25	2.67	3.05	3.43	3.81	4.19	4.57	4.95	5.33	5.71	6.09
42	0.64	1.15	1.66	2.18	2.70	3.21	3.66	4.12	4.58	5.04	5.49	5.95	6.41	6.86	7.32
48	0.75	1.34	1.94	2.55	3.15	3.75	4.28	4.81	5.35	5.88	6.41	6.95	7.48	8.01	8.55
54	0.86	1.54	2.22	2.91	3.60	4.28	4.90	5.51	6.12	6.73	7.34	7.95	8.56	9.17	9.78
60	0.96	1.73	2.50	3.28	4.06	4.82	5.51	6.20	6.88	7.57	8.26	8.94	9.63	10.32	11.00
66	1.07	1.92	2.78	3.64	4.51	5.36	6.13	6.89	7.65						
72	1.18	2.11	3.06	4.01	4.96	5.90	6.74	7.58	8.42						
78	1.29	2.31	3.34	4.37	5.42	6.44	7.36	8.27	9.19						
84	1.39	2.50	3.62	4.74	5.87	6.98	7.97	8.96	9.96						
90	1.50	2.69	3.90	5.11	6.32	7.52	8.59	9.66	10.73						
96	1.61	2.89	4.17	5.47	6.77	8.05	9.20	10.35	11.49						

* Height and Width are Nominal Size (undersized 0.25 in total from actual size)

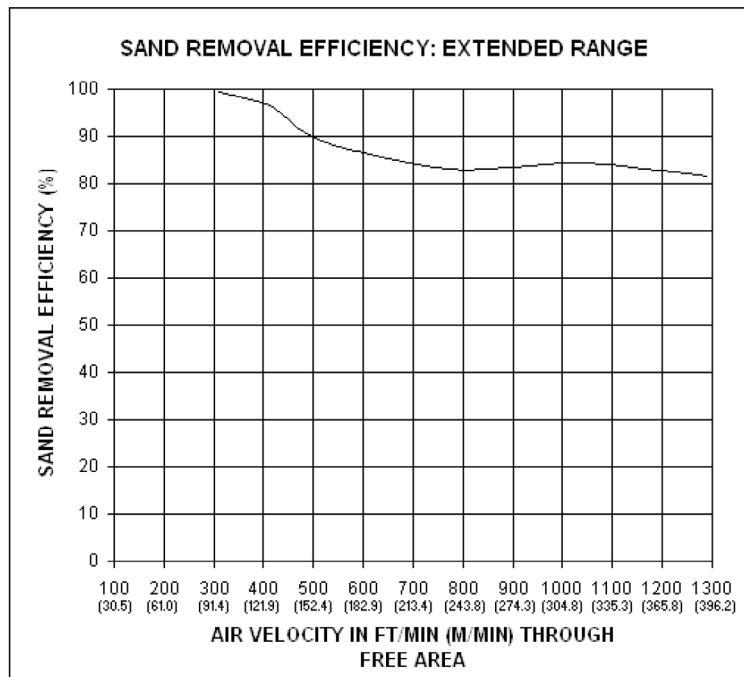
Airflow Resistance (Standard Air - .075 lb/ft³)



Model FSL-401 resistance to airflow (pressure drop) varies depending on louver application (air intake or air exhaust). Free area velocities (shown) are higher than average velocity through the overall louver size. See louver selection information.



Greenheck Fan Corporation certifies that the FSL-401 louvers shown herein are licensed to bear the AMCA Seal. The ratings shown are based on tests and procedures performed in accordance with AMCA Publication 511 and comply with the requirements of the AMCA Certified Ratings Program. The AMCA Certified Ratings Seal applies to air performance ratings.



Sand Removal Efficiency Charts of the FSL-401 per ASHRAE Standard Method 52.1-1992 (previously ASHRAE Standard 52-76) as tested by a third party independent test lab using crushed quartz (150-300 µm) dust medium.

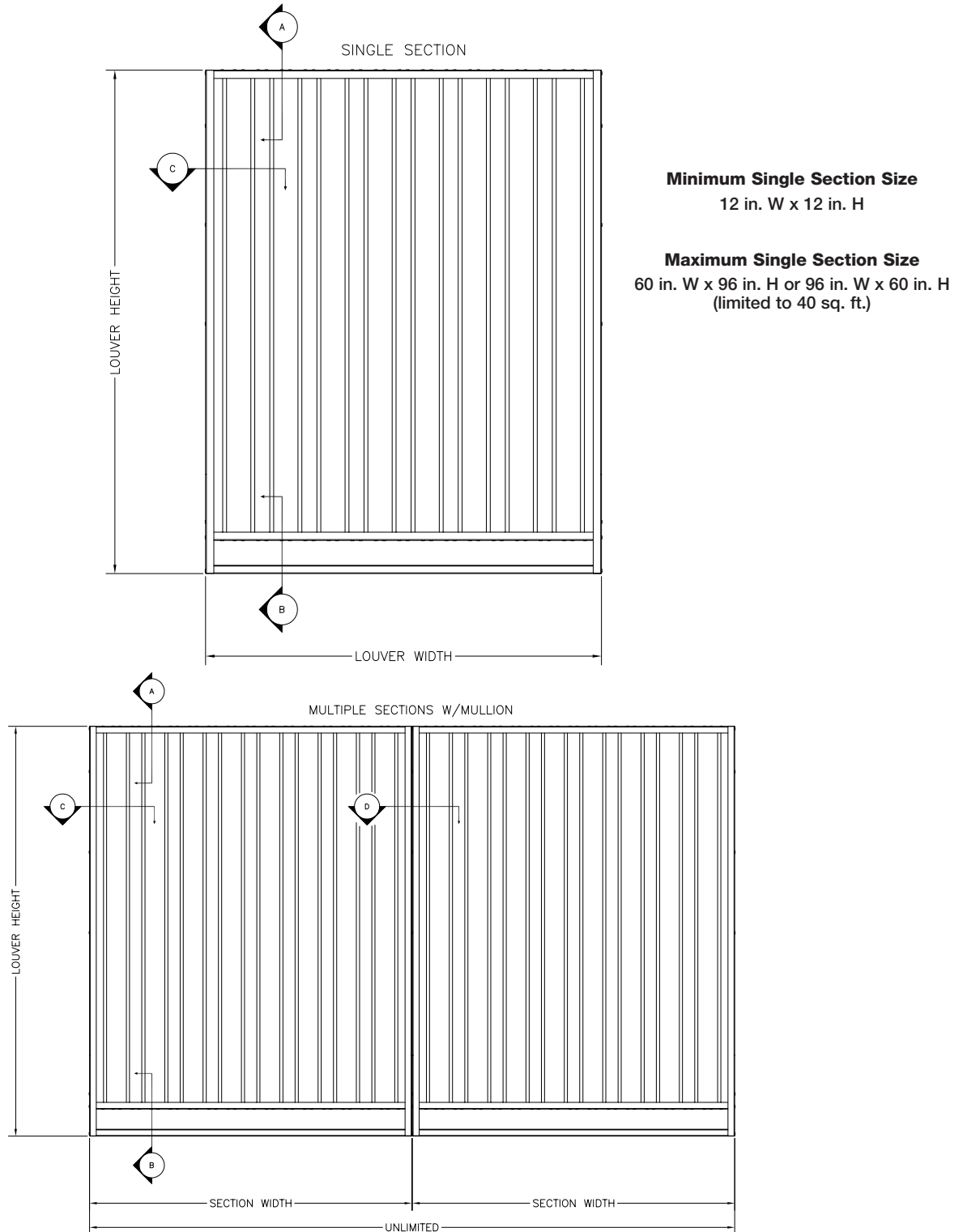
INSTALLATION DETAILS

FSL-401

Maximum Size and Installation Information

Fabricated Steel Sand Louver
Sightproof Blade

Maximum single section size for model FSL-401 is 60 in. W x 96 in. H or 96 in. W x 60 in. (limited to 40 sq. ft.) . Larger openings require field assembly of multiple louver panels to make up the overall opening size. Individual louver panels are designed to withstand a 24 PSF wind-load (please consult Greenheck if the louvers must withstand higher wind-loads). Structural reinforcing members may be required to adequately support and install multiple louver panels within a large opening. Structural reinforcing members along with any associated installation hardware is not provided by Greenheck unless indicated otherwise by Greenheck.



Minimum Single Section Size

12 in. W x 12 in. H

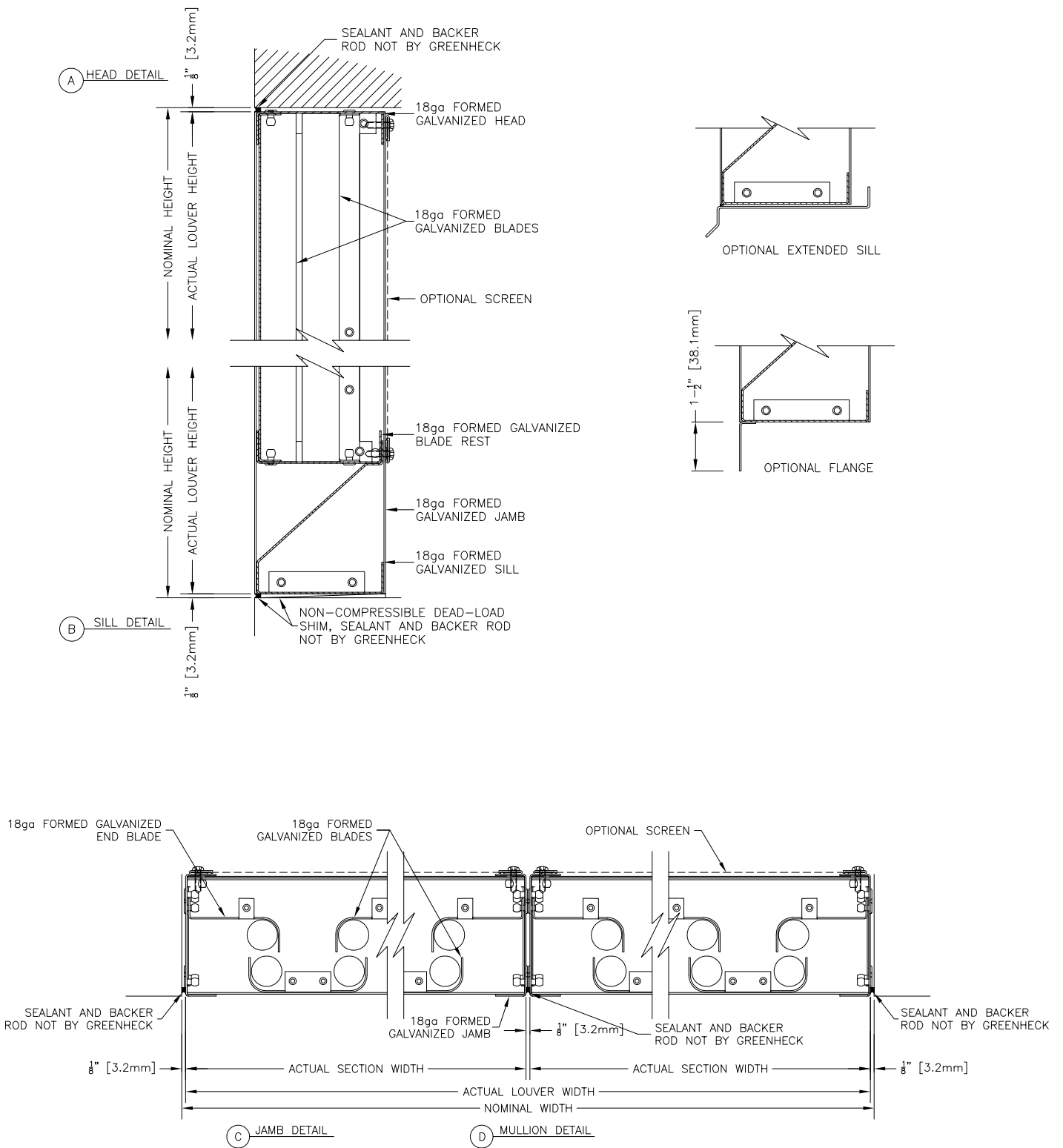
Maximum Single Section Size

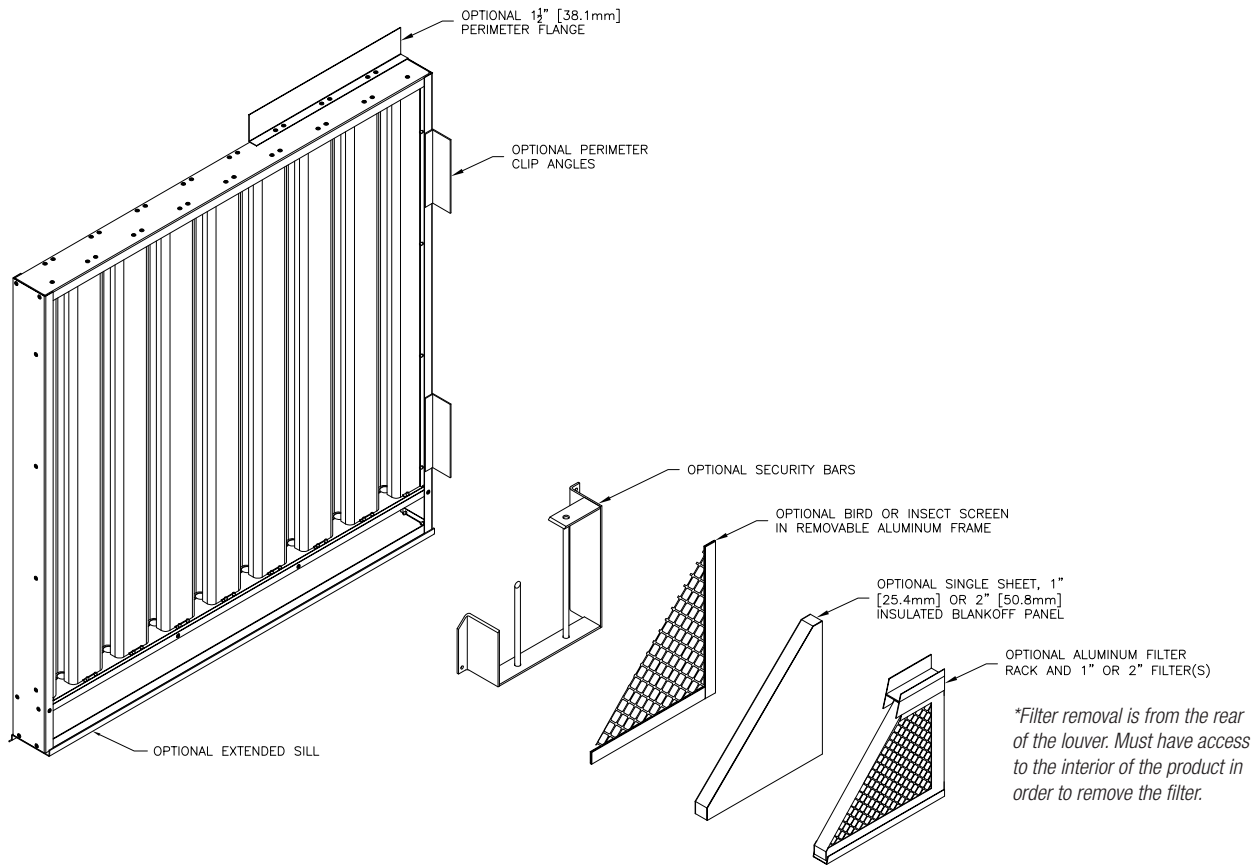
60 in. W x 96 in. H or 96 in. W x 60 in. H
(limited to 40 sq. ft.)

PRODUCT DETAILS

FSL-401

Fabricated Steel Sand Louver
Sightproof Blade





FINISHES

Finish Type	Description/Application	Color Selection	Standard Warranty (Aluminum)
2-coat 70% KYNAR 500®/HYLAR 5000® AAMA 2605 – Dry film thickness 1.2 mil. (AKA: Duranar®, Fluoropon®, Trinar®, Fluoropolymer, Polyvinylidene Fluoride, PVDF2)	“Best.” The premier finish for extruded aluminum. Tough, long-lasting coating has superior color retention and abrasive properties. Resists chalking, fading, chemical abrasion and weathering.	Standard Colors: Any of the 24 standard colors shown can be furnished in 70% or 50% KYNAR 500®/HYLAR 5000® or Baked Enamel. 2-Coat Mica: Greenheck offers 9 standard 2-coat Mica colors. Other colors are available. Consult Greenheck for possible extra cost when selecting non-standard colors or special finishes.	10 Years
2-coat 50% KYNAR 500®/HYLAR 5000® AAMA 2604 – Dry film thickness 1.2 mil. (AKA: Acroflur®, Acrynar®)	“Better.” Tough, long-lasting coating has excellent color retention and abrasive properties. Resists chalking, fading, chemical abrasion and weathering.		5 Years
Baked Enamel AAMA 2603 – Dry film thickness 0.8 mil. (AKA: Acrabond Plus®, Duracron®)	“Good.” Provides good adhesion and resistance to weathering, corrosion and chemical stain.		1 Year
Integral Color Anodize AA-M10C22A42 (>0.7 mil)	“Two-step” anodizing is produced by following the normal anodizing step with a second, colorfast process.	Light, Medium or Dark Bronze; Champagne; Black	5 years
Clear Anodize 215 R-1 AA-M10C22A41 (>0.7 mil)	Clear, colorless and hard oxide aluminum coating that resists weathering and chemical attack.	Clear	5 years
Clear Anodize 204 R-1 AA-M10C22A31 (0.4-0.7 mil)	Clear, colorless and hard oxide aluminum coating that resists weathering and chemical attack.	Clear	1 Year
Industrial coatings	Greenheck offers a number of industrial coatings such as Hi-Pro Polyester, Epoxy, and Permatector®. Consult a Greenheck Product Specialist for complete color and application information.		Consult Greenheck
Mill	Materials may be supplied in natural aluminum or galvanized steel finish when normal weathering is acceptable and there is no concern for color or color change.		n/a

Finishes meet or exceed AAMA 2605, AAMA 2604, and AAMA 2603 requirements. Please consult www.greenheck.com for complete information on standard and extended paint warranties. Paint finish warranties are not applicable to steel products.

