



Model FD-110

Static Rated Fire Dampers

Narrowline Construction
1 1/2 Hour Fire Resistance Rating

APPLICATION

Model FD-110 is approved for use in walls, floors and partitions with fire resistance ratings less than 3 hours. This model carries a 1 1/2 hour UL fire damper label. UL 555 classifies static rated fire dampers for use in HVAC systems that are automatically shut down in the event of fire.

RATINGS

UL555 Fire Resistance Rating
 Fire Rating: 1 1/2 hours

Model FD-110 meets the requirements for fire dampers established by:

- National Fire Protection Association**
(NFPA Standards 90A & 101)
- Underwriters Laboratories Standard 555** (Listing #R-13317)
- IBC International Building Codes**
- New York City** (MEA listing #260-91-M)
- California State Fire Marshall**
(Listing #3225-981:102)

| Construction | Standard | Optional |
|----------------|----------------------|--------------------------------------|
| Frame Material | Galvanized Steel* | - |
| Frame Depth | 2 3/16 in. (56mm) | - |
| Blade Material | Galvanized Steel* | - |
| Closure Spring | Stainless Steel | - |
| Fusible Link | 165°F (74°C) | 212°F or 286°F (100°C) or (141°C) |
| Mounting | Vertical | - |

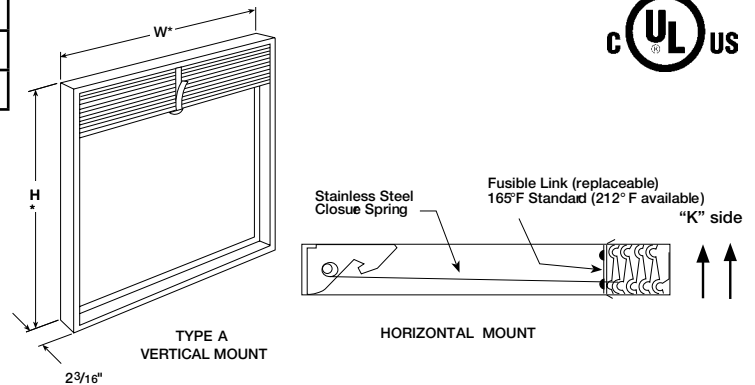
* in gauges required by UL listing R-13317

"UL CLASSIFIED (see complete marking on product)"
"UL CLASSIFIED to Canadian safety standards (see complete marking on product)"
 Standard 555 (Listing #R13317)



OPTIONAL FEATURES

- Extra Fusible Links
- Grille Tabs
- POC retaining angles
- Sealed Transitions and Sleeves
- Security Bars
- Sleeves
- Transitions (A, B, B2)



* These dimensions are furnished approximately 1/4 in. (6mm) undersize

INSTALLATION

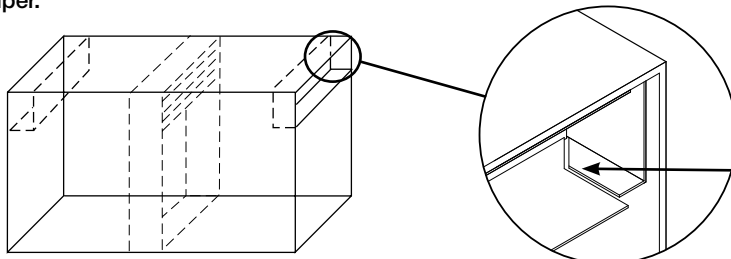
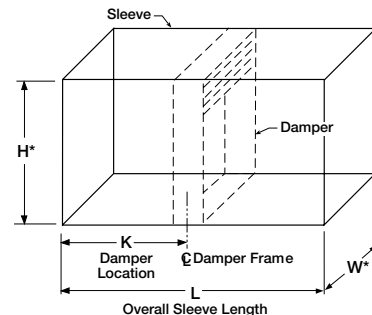
All fire damper installations require the use of sleeves, angles and methods described in Greenheck Fire Damper Installation Instructions #452763, included with every damper shipment. Sleeves can be field fabricated or factory furnished as a complete damper/sleeve assembly. See Factory Sleeve Option below for details.

FACTORY SLEEVE OPTION

FD-110 Fire Dampers are available in factory furnished sleeves. Sleeves are galvanized steel and are available in 10 thru 20 ga. (1mm - 3.5mm) thicknesses and lengths up to 36 in. (914mm).

"K" dimension specifies location of damper within the sleeve. Minimum is 4 in. (102mm), maximum is "L" less 4 in. (102mm), which allows for mounting angle installation and duct connection at each end of sleeve. If "K" dimension is not specified, it will be provided as one half of "L" dimension (damper centered in sleeve).

Note: If using access doors, the doors should be installed on the "K" side of the damper.



Type B with sleeve

Type B corner profile

When sealed option is selected, B transitions will need to be field sealed in the area where duct to sleeve connection is made.

Installation instructions available at www.greenheck.com

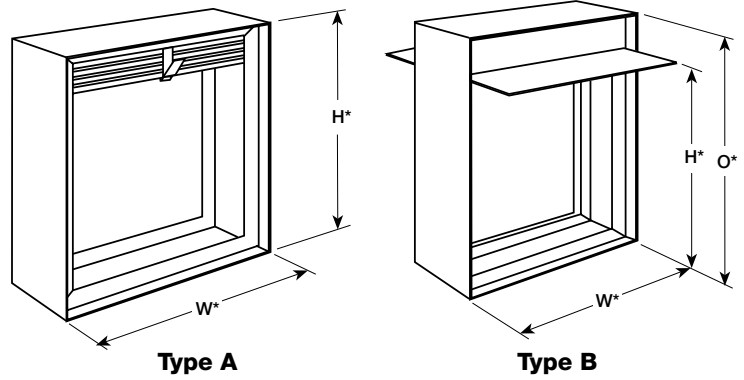
FD-110 Types A & B

SIZING DATA

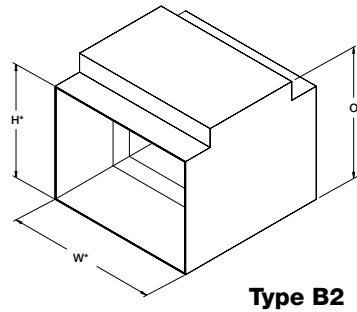
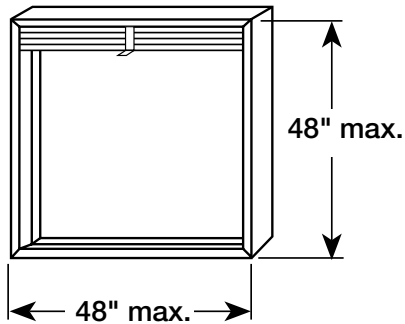
Narrowline FD-110 models are normally supplied in single section sizes only.

| Vertical or Horizontal Mount | | |
|-------------------------------|--------------------------|--------------------------|
| Inches (mm) | Type A | Type B |
| Minimum | 4 x 4 (102 X 102) | 4 X 3 (102 X 76) |
| Maximum Single Section | 48 X 48 (1219 X 1219) | 48 X 42 (1219 X 1067) |
| Maximum Multi-Section | 96 x 48 (2438 x 1219) | 96 x 42 (2438 x 1067) |

Overall Damper Dimensions

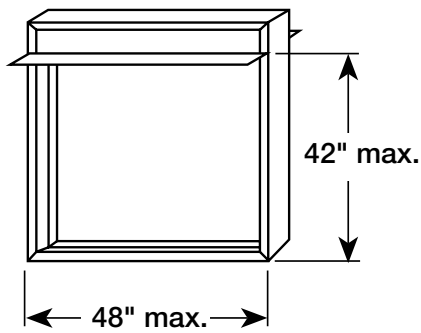


Type A - Maximum Dimensions



Type B2

Type B - Maximum Dimensions

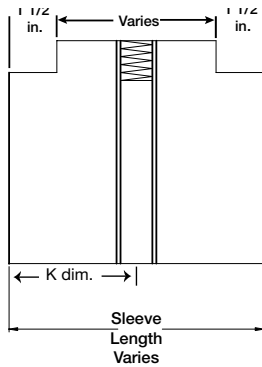


Type B & B2 Overall Damper Dimensions

| H* | O* |
|----------|----------|
| 3 (76) | 5 (127) |
| 4 (102) | 6 (152) |
| 5 (127) | 7 (178) |
| 6 (152) | 8 (203) |
| 7 (178) | 9 (229) |
| 8 (203) | 10 (254) |
| 9 (229) | 11 (279) |
| 10 (254) | 12 (305) |
| 11 (279) | 13 (330) |
| 12 (305) | 14 (356) |
| 13 (330) | 15 (381) |
| 14 (356) | 16 (406) |
| 15 (381) | 18 (457) |
| 16 (406) | 19 (483) |
| 17 (432) | 20 (508) |
| 18 (457) | 21 (533) |
| 19 (483) | 22 (559) |
| 20 (508) | 23 (584) |
| 21 (533) | 24 (610) |
| 22 (559) | 26 (660) |

| H* | O* |
|-----------|-----------|
| 23 (584) | 27 (686) |
| 24 (610) | 28 (711) |
| 25 (635) | 29 (737) |
| 26 (660) | 30 (762) |
| 27 (686) | 31 (787) |
| 28 (711) | 32 (813) |
| 29 (737) | 33 (838) |
| 30 (762) | 34 (864) |
| 31 (787) | 36 (914) |
| 32 (813) | 37 (940) |
| 33 (838) | 38 (965) |
| 34 (864) | 39 (991) |
| 35 (889) | 40 (1016) |
| 36 (914) | 41 (1041) |
| 37 (940) | 42 (1067) |
| 38 (965) | 44 (1118) |
| 39 (991) | 45 (1143) |
| 40 (1016) | 46 (1168) |
| 41 (1041) | 47 (1194) |
| 42 (1067) | 48 (1219) |

Type B2 side view



*Dimensions are in inches (mm). These dimensions are furnished approximately 1/4 in. (6mm) undersize.

