

Island Mounted Model

Provide Greenheck Model FlexConnect™ UDS as shown on plans and in accordance with the following specification:

The FlexConnect™ Utility Distribution System (UDS) shall be either island or wall type. Service risers and horizontal raceway with removable access panels to be constructed of 16 gauge type 304 stainless steel with a #4 finish. The service risers will be able to accommodate both electrical and/or plumbing. The horizontal raceway will be divided into separate compartments for plumbing and electrical. Flanged foot pedestals are provided at each field joint on the horizontal chase when the unit is 16'-0" or longer.

#### Plumbing:

The horizontal plumbing compartment is to include manifolds for gas, hot water, and cold water. The 2 in. gas manifold (single or looped) will include welded threadolet connections. The gas connections are spaced 12 in. apart and are alternately sized as 3/4 in. and 1 1/4 in. every other connection. The 1 in. hot and cold water manifolds will include 3/4 in. plumbing drops every 24 in. along the horizontal raceway. All plumbing drops are capped below the chase, ready for easy connection to any cooking appliance. The gas manifold is supplied with (1) 2 in. mechanical gas valve, shipped loose.

#### Electrical:

The base electrical package shall include a covered 120/1ph. 20 Amp convenience outlet located on the end of each service riser. The unit will have light and fan toggle switches located on the end of one service riser. The standard horizontal chase electrical compartment includes space for wiring and equipment receptacles. All receptacles and wiring/conduit is provided by others.

## FlexConnect™ Utility Distribution System MODEL M \_\_\_\_\_ - G H C - \_\_\_\_\_

Style Elec. Svc.

Feet Inches

For model designation add the appropriate suffix: i.e. MIN-GHC-12-0

 Style:  Wall (W)  Island (I)

#### Electrical Services:

 Standard:  (N)

 Option 1:  (R)

 Option 2:  Service Riser (V)  Chase (H)

#### OPTIONS:

- Quarter turn ball valves and fittings
  - Flexible quick disconnect hoses (restraints provided with gas hoses as requested)
  - Pressure gauges for water lines
  - Cord and plug assemblies (options 1 and 2 only)
- \* All options are installed by others.

#### Optional Electrical Package 1:

Shall include a covered 120/1ph. 20 Amp convenience outlet located on each service riser. The unit will have light and fan toggle switches located on one of the service towers. The horizontal chase electrical compartment includes equipment receptacles. All wiring / conduit is provided by others. Equipment receptacles to be placed in the specified location under the horizontal chase by others.

#### Optional Electrical Package 2:

Shall include an incoming electrical service riser on the right end with a 225 amp main shunt trip breaker. The unit will have individual branch breaker(s) for each equipment receptacle located either on the service riser or horizontal chase directly inline with the equipment receptacle. The unit will have light and fan toggle control switches located on the end of the electrical service riser and a covered 120/1ph. 20 Amp convenience outlet on both service riser ends. Equipment receptacles are fastened in the specified location under the horizontal chase.

#### Code Information

Greenheck Utility Distribution System to be UL Listed, and built in compliance with all applicable codes and standards, including NSF, NFPA 96, NEC, NEMA, Uniform Plumbing Code, ASME, using only UL Listed or recognized components.

1. Total UDS Length \_\_\_\_\_

2. Calculate the chase length \_\_\_\_\_

Total UDS Length - Total Riser Length = Total Chase Length (Use chase sections to make total chase length)

3. In the charts below enter the required quantities for ball valves and hose assemblies. (see charts 1 and 2)

For Options 1 & 2 only

4. Locate/select the correct receptacle positions. For option 1 select receptacles only. (See chart 3)

For Option 2 only

5. Check the required electrical cord assemblies for provided receptacles. (See chart 4 example)

6. Contact Greenheck Fan for pricing.

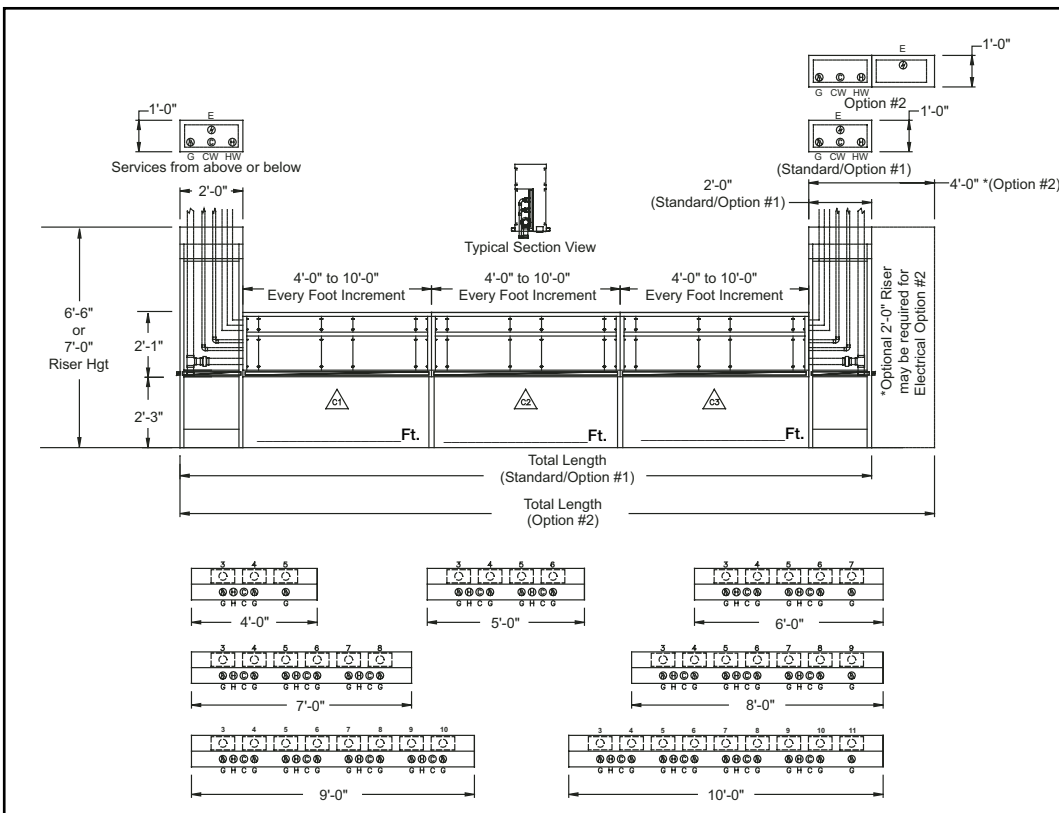


Chart 1

Ball Valves / Fittings ( All )	
Description:	Qty.
<b>Ball Valves</b>	
Gas 2 in.	
Gas 1 1/4 in.	
Gas 3/4 in.	
Water 1 in.	
Water 3/4 in.	
<b>Stainless Steel Reducer</b>	
3/4 in. to 1/2 in.	
3/4 in. to 3/8 in.	
3/4 in. to 1/4 in.	

Chart 2

Hose Assembly: Gas / Water ( All )	
Description:	Qty.
<b>Gas Hoses</b>	
1/4 in. x 6 ft. w/quick disconnect	
1/2 in. x 6 ft. w/quick disconnect	
3/4 in. x 6 ft. w/quick disconnect	
1 in. x 6 ft w/quick disconnect	
1 1/4 in. x 6 ft. w/quick disconnect	
<b>Stainless Steel Reducer</b>	
1/4 in. x 6 ft. hot water hose	
3/8 in. x 6 ft. hot water hose	
1/2 in. x 6 ft. hot water hose	
3/4 in. x 6 ft. hot water hose	
1/4 in. x 6 ft. cold water hose	
3/8 in. x 6 ft. cold water hose	
1/2 in. x 6 ft. cold water hose	
3/4 in. x 6 ft. cold water hose	

\*\*Hoses may be provided locally \*\*

Chart 3

Receptacle Amperage ( Option 1 and 2 )						
Receptacle Type	20 Amps		30 Amps		60 Amps	
	120/1	5-20R	5-30R	5-50R		
208/1	6-20R	6-30R	6-50R			
120/208/1	14-20R	14-30R	14-50R	14-60R		
208/3	15-20R	15-30R	15-50R	15-60R		
480/3	L16-20R	L16-30R				

\*\*480/3 receptacle wiring to remote breakers by others \*\*

Chart 4 Example

	#3	Cord
C1	5-20R	X

Chart 4

		Receptacle Horizontal Chase Position ( Option 2 )																	
		#3	Cord	#4	Cord	#5	Cord	#6	Cord	#7	Cord	#8	Cord	#9	Cord	#10	Cord	#11	Cord
Chase Section	C1																		
	C2																		
	C3																		