

# Utility and Centrifugal

SFB



SFD

UL/cUL 705 Power Ventilators  
E40001 - SFD and SFB



70



Greenheck Fan Corporation certifies that the Model SFD and SFB shown herein are licensed to bear the AMCA seal. The ratings shown are based on tests and procedures performed in accordance with AMCA Publication 211 and comply with the requirements of the AMCA Certified Ratings Program.

**Best  
Available  
Program**

**5 Days**

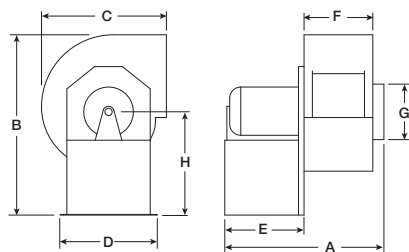
## Model SFD Direct Drive and SFB Belt Drive

Centrifugal forward-curved utility fans are designed for applications requiring low to medium air volumes and pressures.

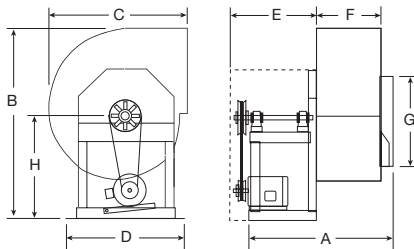
Standard Construction	SFD	SFB
Housing - heavy-gauge steel, lock-seam	■	■
Wheel - aluminum	■	
Wheel - steel, aluminum		■
Corrosion-resistant fasteners	■	■
Ball bearing motor - 1/4 hp and larger	■	■
Adjustable motor plate		■
Adjustable motor pulley		■
Permatector™ protective powder coating		■
Options and Accessories	SFD	SFB
Damper	■	■
Speed control	■	
Isolators - base	■	■
Weatherhood	■	■
Multiple discharge positions - eight	■	■
Belt guard		■
Shaft seal with aluminum rub ring	■	■
Guards - inlet, outlet	■	■
Flanges - inlet, outlet		■
Lube lines		■
Drain connection	■	■
Access door - bolted, hinged	■	■
Dual drives		■
Relubricatable bearings		■
Decorative or protective powder coating	■	■
Certified for high wind and seismic applications	■	■
UL/cUL Listed Power Ventilators	■	■



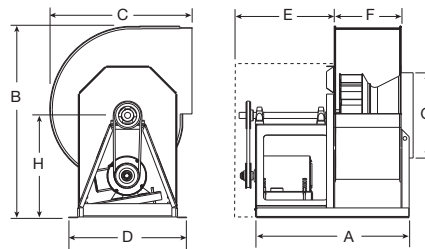
SFD



SFB 9



SFB 10 through 30



Dimensions for SFD

Model Size	A	B	C	D	E	F	G	H
6	14 <sup>1</sup> / <sub>16</sub>	16	11 <sup>1</sup> / <sub>4</sub>	11	8 <sup>3</sup> / <sub>16</sub>	5 <sup>1</sup> / <sub>4</sub>	6	9 <sup>1</sup> / <sub>16</sub>
7.5	14 <sup>5</sup> / <sub>16</sub>	18 <sup>1</sup> / <sub>16</sub>	13 <sup>1</sup> / <sub>16</sub>	12 <sup>1</sup> / <sub>4</sub>	8 <sup>1</sup> / <sub>8</sub>	5 <sup>1</sup> / <sub>4</sub>	8	9 <sup>5</sup> / <sub>8</sub>
9	17 <sup>7</sup> / <sub>8</sub>	20 <sup>5</sup> / <sub>16</sub>	15 <sup>13</sup> / <sub>16</sub>	13 <sup>3</sup> / <sub>4</sub>	10 <sup>3</sup> / <sub>8</sub>	6 <sup>1</sup> / <sub>4</sub>	10	10 <sup>3</sup> / <sub>4</sub>
10	19 <sup>3</sup> / <sub>8</sub>	24 <sup>5</sup> / <sub>16</sub>	18 <sup>5</sup> / <sub>8</sub>	16 <sup>1</sup> / <sub>4</sub>	11 <sup>3</sup> / <sub>8</sub>	6 <sup>3</sup> / <sub>4</sub>	12	12 <sup>3</sup> / <sub>4</sub>

All dimensions are in inches.

Dimensions for SFB

Model Size	A	B	C	D	E	F	G	H
9	20	24	16 <sup>7</sup> / <sub>8</sub>	14 <sup>1</sup> / <sub>4</sub>	15 <sup>1</sup> / <sub>2</sub>	6 <sup>5</sup> / <sub>8</sub>	10	13 <sup>3</sup> / <sub>4</sub>
10	22	26 <sup>5</sup> / <sub>8</sub>	19 <sup>5</sup> / <sub>8</sub>	16 <sup>5</sup> / <sub>8</sub>	15 <sup>1</sup> / <sub>2</sub>	8 <sup>1</sup> / <sub>2</sub>	11	15 <sup>1</sup> / <sub>8</sub>
12	22 <sup>1</sup> / <sub>2</sub>	28 <sup>3</sup> / <sub>8</sub>	21 <sup>3</sup> / <sub>8</sub>	16 <sup>5</sup> / <sub>8</sub>	15 <sup>1</sup> / <sub>2</sub>	9	13	15 <sup>1</sup> / <sub>8</sub>
15	32 <sup>5</sup> / <sub>8</sub>	31 <sup>1</sup> / <sub>4</sub>	23 <sup>3</sup> / <sub>8</sub>	18 <sup>3</sup> / <sub>8</sub>	21 <sup>3</sup> / <sub>4</sub>	12 <sup>3</sup> / <sub>4</sub>	15 <sup>3</sup> / <sub>8</sub>	16 <sup>5</sup> / <sub>8</sub>
18	36 <sup>7</sup> / <sub>8</sub>	42	30 <sup>7</sup> / <sub>8</sub>	25 <sup>1</sup> / <sub>8</sub>	22	17 <sup>3</sup> / <sub>4</sub>	19 <sup>1</sup> / <sub>4</sub>	22 <sup>3</sup> / <sub>8</sub>
20	37	46	33 <sup>5</sup> / <sub>8</sub>	27 <sup>3</sup> / <sub>8</sub>	23 <sup>3</sup> / <sub>4</sub>	15 <sup>5</sup> / <sub>8</sub>	21 <sup>1</sup> / <sub>8</sub>	24 <sup>1</sup> / <sub>2</sub>
22	39 <sup>5</sup> / <sub>8</sub>	52 <sup>1</sup> / <sub>2</sub>	36 <sup>3</sup> / <sub>4</sub>	30 <sup>3</sup> / <sub>4</sub>	24	17 <sup>1</sup> / <sub>2</sub>	23	28 <sup>3</sup> / <sub>4</sub>
25	41 <sup>1</sup> / <sub>2</sub>	57 <sup>3</sup> / <sub>4</sub>	40 <sup>3</sup> / <sub>8</sub>	33 <sup>5</sup> / <sub>8</sub>	25	19 <sup>1</sup> / <sub>2</sub>	25 <sup>7</sup> / <sub>8</sub>	31 <sup>1</sup> / <sub>2</sub>
27	46	61 <sup>1</sup> / <sub>8</sub>	44	37 <sup>5</sup> / <sub>8</sub>	27	21 <sup>3</sup> / <sub>8</sub>	28 <sup>1</sup> / <sub>2</sub>	33
30	48 <sup>1</sup> / <sub>4</sub>	68	48 <sup>3</sup> / <sub>4</sub>	41 <sup>1</sup> / <sub>8</sub>	27	23 <sup>3</sup> / <sub>8</sub>	31 <sup>1</sup> / <sub>4</sub>	36 <sup>5</sup> / <sub>8</sub>

All dimensions are in inches.

Performance for SFD

Model Size	HP	RPM	CFM / Static Pressure in inches wg								Max BHP	Sones @ .25	Quick Build Best Available
			.25	.5	.75	1	1.25	1.5	2	2.5			
6	1/6	1140	338								0.06	6.0	5 Days
	1/4	1725	628	541	424						0.24	12.8	
7.5	1/6	1140	612	467							0.16	9.8	5 Days
	1/2	1725	1028	949	869	775	636				0.59	18.6	
9	1/4	860	748	487							0.18	7.8	5 Days
	1/2	1140	1097	957	782						0.46	14.9	
	1 <sup>1</sup> / <sub>2</sub>	1725	1765	1683	1595	1502	1407	1298	989		1.64	29	
10	1/3	860	1176	965							0.36	11.3	5 Days
	3/4	1140	1653	1528	1378	1163					0.86	18.5	
	3	1725	2603	2525	2444	2362	2275	2179	1942	1621	3.03	37	

Performance certified is for installation Type B: Free inlet, Ducted outlet. Power rating (Bhp) does not include transmission losses. Performance ratings do not include the effects of appurtenances (accessories). The AMCA Certified Ratings Seal applies to air performance only.

### Performance for SFB

Model Size	CFM	RPM / Static Pressure in inches wg										Max BHP	Sones @ .25	Quick Build Best Available
		.25	.5	.75	1	1.25	1.5	2	2.5	3	3.25			
9	360	644										0.03	6.3	5 Days
	460	681	891									0.08	6.8	
	560	728	930	1090	1225							0.19	7.5	
	660	780	966	1129	1264	1382						0.28	8.5	
	760	838	1013	1166	1303	1422	1528					0.39	9.8	
	860	909	1064	1207	1340	1461	1568	1758				0.58	11.1	
	960	983	1118	1256	1378	1498	1608	1798	1965			0.82	11.1	
	1060	1059	1174	1306	1426	1534	1644	1837				0.78	12.0	
	1260	1216	1318	1417	1528	1631	1728	1911				1.01	14.2	
	1360	1297	1392	1482	1583	1682	1777	1949				1.14	15.7	
1460	1378	1468	1554	1639	1736	1827	1998				1.31	17.3		
10	600	526										0.05	5.6	5 Days
	790	575	730									0.12	6.2	
	980	633	777	897	1013							0.30	7.1	
	1170	693	828	944	1045	1144						0.45	8.3	
	1360	760	887	994	1092	1181	1263	1430				0.81	9.9	
	1550	828	946	1049	1142	1229	1309	1456	1603			1.17	11.1	
	1740	898	1009	1109	1196	1279	1357	1499	1629			1.37	11.4	
	1930	973	1077	1169	1256	1332	1407	1546				1.43	12.4	
	2120	1050	1145	1232	1316	1393	1461	1596				1.69	13.8	
	2310	1128	1214	1299	1376	1452	1522	1647				1.97	15.3	
2500	1207	1285	1368	1441	1512	1581					2.04	17.1		
12	825	455										0.07	5.7	5 Days
	1065	493	631									0.18	6.3	
	1305	533	665	773	871							0.40	7.1	
	1545	580	703	806	897	983	1061					0.71	8.2	
	1785	632	743	844	931	1010	1087	1225				1.09	9.6	
	2025	686	789	883	969	1045	1116	1251	1373			1.56	11.0	
	2265	747	837	925	1008	1083	1152	1278	1399			1.84	11.8	
	2505	809	889	971	1048	1122	1190	1314				1.87	13.0	
	2745	873	943	1019	1093	1162	1230					1.91	14.5	
	2985	937	1001	1071	1140	1205						2.08	16.1	
3225	1002	1062	1124								2.08	17.8		
15	1560	395	508									0.25	6.0	5 Days
	1860	421	529	619								0.43	7.5	
	2160	450	554	638	716							0.67	9.9	
	2460	481	580	663	734	803	865					1.09	10.9	
	2760	514	608	688	759	822	884					1.32	11.5	
	3060	549	637	715	784	846	903	1013				1.90	12.7	
	3360	585	668	742	810	871	928	1031	1128			2.58	14.1	
	3660	623	701	772	837	897	953	1053	1147			2.98	15.9	
	3960	662	734	802	865	924	979	1078	1166			3.40	17.8	
	4260	701	768	834	895	951	1005	1103	1191			3.88	18.9	
4560	742	804	867	925	980	1032	1129				3.89	20		
18	2725	364	464	550								0.60	8.4	5 Days
	3150	388	481	563	635							0.93	10.3	
	3575	415	500	578	648	712						1.33	11.1	
	4000	444	524	596	662	725	782					1.80	12.0	
	4425	473	548	615	680	738	795	898				2.60	13.6	
	4850	503	573	638	698	756	809	910	1001			3.54	15.5	
	5275	534	601	662	719	774	826	923	1013			3.99	17.7	
	5700	566	630	687	743	793	844	938	1026			4.46	19.2	
	6125	599	660	714	767	817	863	956	1039			4.95	20	
	6550	631	689	743	791	840	886	974				4.81	22	
6975	664	720	771	818	865	909	992				5.38	24		
20	3275	320	402									0.53	8.1	5 Days
	3800	343	420	487								0.90	10.3	
	4325	369	440	503	561	613						1.61	11.3	
	4850	396	462	521	576	628	676					2.19	12.3	
	5375	424	485	542	594	642	689					2.56	14.0	
	5900	454	511	564	614	661	704	788				3.64	16.1	
	6425	484	537	587	634	679	722	801	877			4.89	18.6	
	6950	515	565	612	657	700	741	818	890			5.51	20	
	7475	546	593	638	681	722	761	836	904			6.20	22	
	8000	578	622	665	705	745	782	854	922			7.02	24	
8525	610	652	692	731	769	805	875	940			7.89	26		

Performance certified is for installation Type B: Free inlet, Ducted outlet. Power rating (Bhp) does not include transmission losses. Performance ratings do not include the effects of appurtenances (accessories). The AMCA Certified Ratings Seal applies to air performance only.



## Performance for SFB

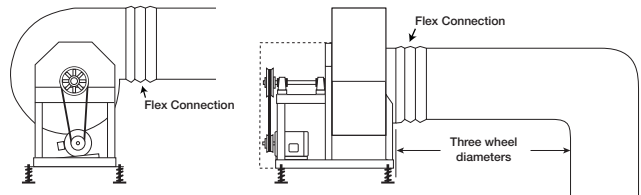
Model Size	CFM	RPM / Static Pressure in inches wg										Max BHP	Sones @ .25	Quick Build Best Available
		.25	.5	.75	1	1.25	1.5	2	2.5	3	3.25			
22	4000	285	359	419								0.83	8.6	5 Days
	4950	315	385	441	491	535						1.67	11.3	
	5900	350	410	467	514	557	598					2.52	14.1	
	6850	388	441	491	540	582	620	691	755			4.56	17.2	
	7800	428	475	520	564	608	646	713	776	834	861	6.75	21	
	8750	470	511	552	593	632	671	739	798	854	881	8.14	24	
	9700	512	550	587	624	660	695	764	824	877		9.24	27	
	10650	555	590	623	658	691	724	789	850			10.00	30	
	11600	599	631	662	693	724	755	813	874			11.82	34	
	12550	643	672	701	730	759	788	844	898			13.80	38	
13500	688	714	742	768	794	822	875				14.80	42		
25	6000	246	310	363	412							1.65	8.4	5 Days
	6950	263	324	375	419	463						2.42	10.3	
	7900	283	338	387	431	470	508					3.34	12.1	
	8850	304	354	401	444	482	518	585				4.93	14.1	
	9800	326	372	416	457	495	530	593	654			6.81	16.1	
	10750	349	391	432	471	508	542	605	660	716	743	9.57	18.4	
	11700	373	412	450	487	522	556	617	672	722	748	10.74	21	
	12650	397	433	468	504	537	569	629	684	734		11.62	23	
	13600	421	455	488	521	553	584	643	696	746		13.21	25	
	14550	445	478	510	539	570	600	657	709			13.43	27	
15500	471	501	531	559	588	617	671	723			15.26	29		

Performance certified is for installation Type B: Free inlet, Ducted outlet. Power rating (Bhp) does not include transmission losses. Performance ratings do not include the effects of appurtenances (accessories). The AMCA Certified Ratings Seal applies to air performance only.

## Utility Fans Typical Installations

### General Clean Air or Fume Hood (Non-Grease)

The SFD, SFB and SWB are designed for applications ranging from clean air to contaminated air. Installations must include a means for inspecting, cleaning and servicing the exhaust fan.



### SWD and SWB, Commercial Kitchen (Grease)

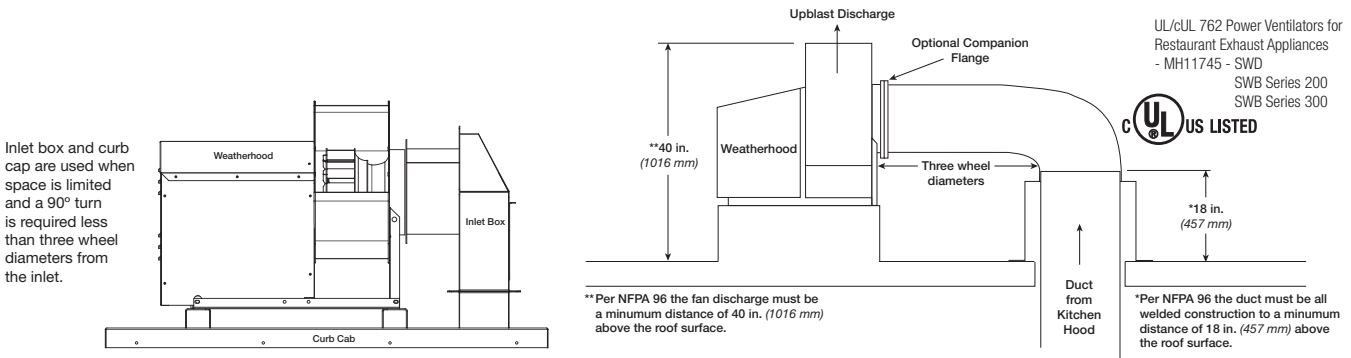
The SWD and SWB Series 200 and 300 are designed to meet restaurant and foodservice applications. These fans are UL and cUL Listed for grease removal and have been tested under elevated temperature conditions.

Due to high temperatures and grease-laden airstreams in commercial kitchen ventilation, system designers must be aware of governing codes and guidelines. The National Fire Protection Association (NFPA) is the primary source used by many local codes for commercial kitchen ventilation systems. Local code authorities should be consulted before proceeding with any kitchen ventilation project.

Installation must include a means for inspecting, cleaning and servicing the exhaust fan.

Fans selected for grease removal must include a weatherhood, access door and 1-inch (25 mm) drain connection. For grease applications where the fan is mounted indoors, the welded scroll option must be selected. An outlet guard is strongly recommended when the fan discharge is accessible. When an outlet guard is not ordered with the fan, it must be provided by the installer. An upblast discharge is recommended. No dampers are to be used in the system.

The fan discharge must be a minimum of 40 inches (1016 mm) above the roof line and the exhaust duct must be fully welded to a minimum distance of 18 inches (457 mm) above the roof surface.





UL/cUL 705 Power Ventilators  
E40001 - SWD  
UL/cUL 762 Power Ventilators for Restaurant Exhaust  
Appliances - MH11745 - SWD



Greenheck Fan Corporation certifies that the Model SWD shown herein is licensed to bear the AMCA Seal. The ratings shown are based on tests and procedures performed in accordance with AMCA Publication 211 and comply with the requirements of the AMCA Certified Ratings Program.

**Best Available Program**

10 Days

## Model SWD Direct Drive

Centrifugal backward-inclined utility fans are designed for applications requiring medium to high air volumes and pressures. The wheel design provides the ability to build pressure without overloading.

- Scroll is galvanized non-painted construction
- Offered exclusively with Vari-Green® electronically commutated motors for energy efficiency and ease of control.

### Performance

Capacities range from 800 to 5,860 cfm up to 2.5 in. wg of static pressure.

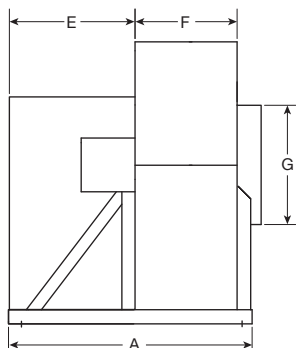
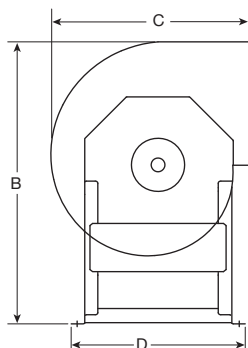
Standard Construction	
Housing - heavy-gauge steel, lock-seam	
Vari-Green® motor - 80% turndown, 85% efficient	
Wheel - aluminum	
Corrosion-resistant fasteners	
Ball bearing motor - 1/4 hp and larger	
Weatherhood	
Options and Accessories	
	Stock
Welded scroll construction	
Aluminum construction	
Wheel rotation - clockwise or counterclockwise	
Damper	✓
Isolators - base	✓
Multiple discharge positions - eight	
Inlet vane damper	
Shaft seal with aluminum rub ring	
Guards - inlet, outlet	
Drain connection	
Access door - bolted, hinged	
Flanges - inlet, outlet, companion	
Decorative or protective powder coating	
UL/cUL Listed Power Ventilators	
UL/cUL Listed Power Ventilators for Restaurant Exhaust Appliances	



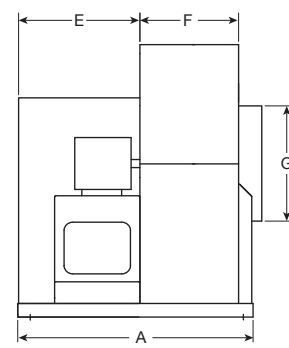
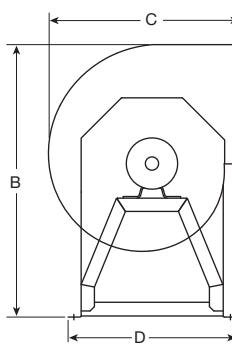
VARI  GREEN  
Motor

Select sizes and models with the Vari-Green® motor are available in stock.

SWD 7 through 10



SWD 13 through 18



Dimensions for SWD

Model Size	A	B	C	D	E	F	G
7	23 <sup>1</sup> / <sub>4</sub>	26 <sup>5</sup> / <sub>8</sub>	18 <sup>3</sup> / <sub>4</sub>	16 <sup>7</sup> / <sub>8</sub>	12 <sup>1</sup> / <sub>2</sub>	9 <sup>3</sup> / <sub>4</sub>	11
8	23 <sup>1</sup> / <sub>4</sub>	26 <sup>5</sup> / <sub>8</sub>	18 <sup>3</sup> / <sub>4</sub>	16 <sup>7</sup> / <sub>8</sub>	12 <sup>1</sup> / <sub>2</sub>	9 <sup>3</sup> / <sub>4</sub>	11
10	23 <sup>1</sup> / <sub>4</sub>	26 <sup>5</sup> / <sub>8</sub>	18 <sup>3</sup> / <sub>4</sub>	16 <sup>7</sup> / <sub>8</sub>	12 <sup>1</sup> / <sub>2</sub>	9 <sup>3</sup> / <sub>4</sub>	11
13	25 <sup>1</sup> / <sub>4</sub>	31 <sup>1</sup> / <sub>4</sub>	23 <sup>3</sup> / <sub>8</sub>	19 <sup>1</sup> / <sub>2</sub>	13 <sup>1</sup> / <sub>4</sub>	10 <sup>5</sup> / <sub>8</sub>	14
15	27	34 <sup>1</sup> / <sub>4</sub>	25 <sup>1</sup> / <sub>4</sub>	21 <sup>1</sup> / <sub>2</sub>	13 <sup>3</sup> / <sub>4</sub>	11 <sup>1</sup> / <sub>2</sub>	15 <sup>5</sup> / <sub>8</sub>
16	28	38 <sup>1</sup> / <sub>2</sub>	28	22 <sup>1</sup> / <sub>2</sub>	13 <sup>3</sup> / <sub>4</sub>	12 <sup>1</sup> / <sub>4</sub>	17 <sup>1</sup> / <sub>2</sub>
18	29 <sup>1</sup> / <sub>2</sub>	42	30 <sup>3</sup> / <sub>8</sub>	22 <sup>1</sup> / <sub>2</sub>	13 <sup>3</sup> / <sub>4</sub>	14 <sup>1</sup> / <sub>2</sub>	19 <sup>1</sup> / <sub>4</sub>

All dimensions are in inches.

Performance for SWD



Model Size	HP	RPM	CFM / Static Pressure in inches wg										Max BHP	Sones @ .25	Quick Build Best Available	
			.25	.5	.75	1	1.25	1.5	1.75	2	2.25	2.5				
7	1/4	1725	535	493	437	380	308							0.17	12.4	10 Days
	1/2	2500	802	778	750	721	689	648	603	566	523	477	0.52	23		
8	1/4	1725	713	630	534	405								0.15	10.5	10 Days
	1/2	2500	1092	1039	984	926	864	796	716	625	520		0.46	17.6		
10	1/4	1725	1283	1168	1047	921	785							0.27	14.7	10 Days
	3/4	2200	1691	1602	1512	1422	1324	1226	1123	1018	882		0.56	21		
13	1/4	1200	1382	1191	964									0.19	9.3	10 Days
	1/2	1550	1874	1739	1591	1427	1246						0.41	13.6		
	3/4	1725	2115	1995	1870	1731	1581	1419	1230				0.57	16.0		
15	1/2	1150	1905	1671	1416									0.29	10.5	10 Days
	3/4	1400	2412	2224	2027	1818	1605						0.52	14.0		
	1	1725	3053	2896	2746	2592	2422	2252	2080	1906			0.98	19.5		
16	3/4	900	2054	1754	1394									0.26	8.8	10 Days
	1	1300	3173	2983	2795	2573	2328	2078					0.79	16.1		
	2	1725	4324	4176	4033	3890	3748	3593	3422	3241	3052	2863	1.85	26		
18	3/4	850	2880	2510	2060									0.40	9.8	10 Days
	1	950	3302	2964	2631	2162							0.56	11.9		
	2	1300	4734	4487	4240	3994	3765	3496	3157				1.44	20		

Performance certified is for installation Type B - Free inlet, Ducted outlet. Performance ratings do not include the effects of appurtenances (accessories). The AMCA Certified Ratings Seal applies to air performance only.



Series 100



Series 200



Series 300

UL/cUL 705 Power Ventilators  
E40001 - SWB Series 100  
SWB Series 200  
SWB Series 300

UL/cUL 762 Power Ventilators for Restaurant Exhaust  
Appliances - MH11745 - SWB Series 200  
SWB Series 300

UL/cUL Power Ventilators for Smoke Control Systems  
MH17511 - SWB Series 200  
SWB Series 300



UL/cUL 705 Listed is standard on In Stock  
SWB Series 200 models.



Greenheck Fan Corporation certifies that the Model SWB Series 100, 200 and 300 shown herein is licensed to bear the AMCA Seal. The ratings shown are based on tests and procedures performed in accordance with AMCA Publication 211 and comply with the requirements of the AMCA Certified Ratings Program.



Greenheck Fan Corporation certifies that the Model SWB Series 300 AF shown herein is licensed to bear the AMCA Seal. The ratings shown are based on tests and procedures performed in accordance with AMCA Publication 211 and Publication 311 and comply with the requirements of the AMCA Certified Ratings Program.

Model	Best Available Program
SWB Series 200 Sizes 210, 212, 216 and 224	In Stock
SWB Series 100 and 200	5 Days
SWB Series 300	10 Days

## Model SWB Belt Drive Series 100, 200 and 300

Centrifugal backward-inclined utility fans are designed for applications requiring medium to high air volumes and pressures. The wheel design provides the ability to build pressure without overloading.

### Series 100

- Scroll is galvanized non-painted construction
- Drive frame has Permatector™ protective powder coating

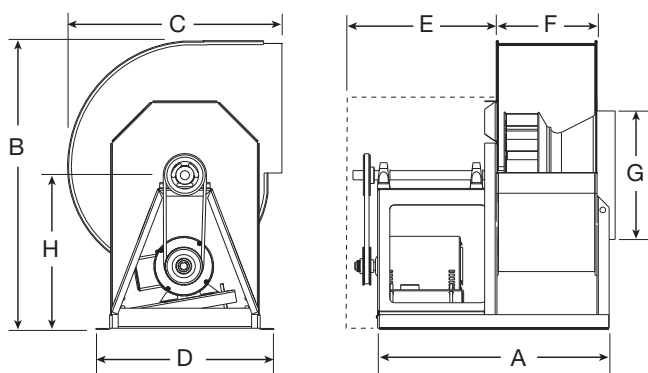
### Series 200

- Entire fan has Permatector™ protective powder coating
- Heavier duty shaft, bearings and material thickness

### Series 300

- Entire fan has Permatector™ protective powder coating
- Bolted and reinforced heavy-gauge galvanized steel drive frame
- Backward-inclined wheels are constructed of steel
- Airfoil wheels are constructed of aluminum and feature welded blades

Standard Construction	Series 100	Series 200	Series 300	
Housing - heavy-gauge steel, lock-seam	■	■	■	
Wheel - aluminum	■			
Wheel - aluminum, steel		■	■	
Corrosion-resistant fasteners	■	■	■	
Ball bearing motor - 1/4 hp and larger	■	■	■	
Weatherhood			■	
Access door - hinged			■	
Flange - outlet			■	
Adjustable motor plate	■	■	■	
Adjustable motor pulley	■	■	■	
Options and Accessories	Stock	Series 100	Series 200	Series 300
Inlet box (sizes 206 through 224)			■	
Welded scroll construction			■	■
Aluminum construction			■	
Wheel rotation - clockwise or counterclockwise		■	■	■
Aluminum wheel			■	■
Damper	✓	■	■	■
Isolators - base	✓	■	■	■
Multiple discharge positions - eight		■	■	■
Inlet vane damper		■	■	
Weatherhood		■	■	
Shaft seal with aluminum rub ring		■	■	■
Guards - inlet, outlet		■	■	■
Heat slinger		■	■	■
Lube lines		■	■	■
Drain connection		■	■	■
Access door - bolted		■		
Access door - bolted, hinged			■	■
Flanges - inlet, outlet, companion		■	■	■
Dual drives		■	■	■
Relubricatable bearings		■	■	■
Performance baffle		■	■	■
Stainless steel shaft		■	■	■
Decorative or protective powder coating			■	■
Certified for high wind and seismic applications		■	■	■
UL/cUL Listed Power Ventilators		■	■	■
UL/cUL Listed Power Ventilators for Restaurant Exhaust Appliances			■	■
UL/cUL Listed Power Ventilators for Smoke Control Systems			■	■



### Dimensions for SWB • Series 100

Model Size	Series 100							
	A	B	C	D	E	F	G	H
106-110	23½	26⅝	18¾	16⅞	15½	9¼	11	15⅝
113	30⅞	31¼	23⅜	18⅞	21¼	10⅝	14	16⅞
115	31¼	34¾	25¼	21⅞	21½	11⅝	15⅞	18½
116	32⅜	38⅞	28	22⅞	21½	12¾	17½	20⅞
118	34	42	30⅞	25	22	14⅞	19¼	22⅞
120	37	46	33⅞	27⅞	23¼	15⅞	21⅞	24½
124	41½	57¾	40⅞	33⅞	25	19	25⅞	31½

### Dimensions for SWB • Series 200

Model Size	Series 200							
	A	B	C	D	E	F	G	H
206-210	22	26⅞	18¾	16⅞	15½	8¼	11	15⅝
212	22⅞	28⅞	21⅞	16⅞	15½	9⅞	13	15⅝
213	30⅞	31¼	23⅜	18⅞	21¼	10⅞	14	16⅞
215	31¼	34¾	25¼	21⅞	21½	11⅞	15⅞	18½
216	32⅜	38⅞	28	22⅞	21½	12¾	17½	20⅞
218	34	42	30⅞	25	22	14⅞	19¼	22⅞
220	37	46	33⅞	27⅞	23¼	15⅞	21⅞	24½
222	39⅞	52½	36⅞	30½	24	17	23	28¾
224	41½	57¾	40⅞	33⅞	25	19	25⅞	31½

### Dimensions for SWB • Series 300

Model Size	Series 300							
	A	B	C	D	E	F	G	H
327	52⅞	61¼	46¼	35¾	30	21⅞	32	33
330	58⅞	68¼	50¼	38½	33⅞	23⅞	35¼	36⅞
333	60⅞	74⅞	55⅞	41⅞	33⅞	26⅞	38¼	40
336	63⅞	82¼	61	45⅞	33⅞	28⅞	42	44½
340	66¼	89⅞	66⅞	49⅞	33⅞	31⅞	46	47
344	75	98⅞	73⅞	53⅞	38⅞	35¼	50½	52
349	78½	108⅞	80⅞	58⅞	38⅞	38¾	55	57

All dimensions are in inches.



Performance for SWB • Series 100

Model Size	CFM	RPM / Static Pressure in inches wg										Max BHP	Sones @ .25	Quick Build Best Available	In Stock
		.25	.5	.75	1	1.25	1.5	2	2.5	3	3.5				
106	100	936	1273	1542								0.06	5.4	5 Days	—
	260	1550	1681	1830	1993	2155	2318	2614	2880			0.45	8.0		
	500	2775	2858	2931								0.44	22		
107	140	891	1198									0.04	4.5	5 Days	—
	320	1372	1531	1686	1848	2005	2156	2432	2684			0.40	7.3		
	740	2852										0.50	23		
108	200	860	1148									0.04	5.5	5 Days	—
	700	1699	1849	1989	2119	2242	2361	2589	2796			0.63	10.3		
	1200	2728										0.52	23		
110	500	898	1094	1264								0.10	8.5	5 Days	—
	800	1192	1356	1496	1621	1736	1849	2054				0.45	9.7		
	1250	1688	1813	1924	2031	2130	2222	2394	2551			0.87	14.2		
	1400	1859	1976	2080	2179	2274	2362	2526				0.85	16.0		
	2000	2571	2652									0.96	27		
113	700	767	939									0.09	5.4	5 Days	—
	1100	1009	1147	1269	1378	1482	1580					0.41	7.4		
	1500	1283	1391	1494	1591	1680	1766	1922	2073			0.94	10.0		
	2300	1860	1940	2014	2085	2153	2222	2352				1.43	18.1		
	2700	2154	2228	2293	2356							1.36	22		
115	1000	737	879									0.13	6.2	5 Days	—
	1500	955	1078	1183	1276	1360	1445					0.56	8.2		
	2000	1196	1294	1389	1474	1552	1625	1759	1883			1.24	11.1		
	3000	1698	1776	1847	1911	1973	2037	2156				1.91	19.0		
	3500	1956	2024	2090	2150							1.86	24		
116	1200	625	750									0.15	5.4	5 Days	—
	1920	854	949	1039	1120	1192	1259					0.71	8.1		
	2280	979	1061	1141	1216	1287	1352	1470	1576			1.38	10.1		
	2640	1107	1182	1250	1320	1385	1448	1564	1666	1762		1.93	12.7		
	3720	1501	1560	1615	1667	1716	1764	1863	1955			2.70	19.6		
	4440	1768	1821	1869	1916	1960	2002					2.77	27		
	4800	1903	1953	1999								2.65	31		
118	1500	545	667									0.19	5.6	5 Days	—
	2300	717	806	887	969	1044						0.71	7.7		
	2700	808	892	964	1032	1103	1170					1.01	9.1		
	3100	902	980	1047	1109	1169	1229	1349				1.55	10.9		
	3500	997	1070	1135	1191	1247	1301	1407	1513			2.19	13.1		
	4700	1291	1351	1405	1457	1505	1550	1631				2.85	20		
	5500	1491	1544	1593	1640							2.80	24		
120	1800	471	591									0.22	6.5	5 Days	—
	2250	528	633	728	811							0.56	6.6		
	3150	658	743	820	892	962	1028	1145				1.57	7.9		
	3600	723	807	877	943	1006	1068	1184	1287			2.24	9.0		
	4500	861	937	1001	1057	1113	1166	1257				2.33	13.1		
	6300	1151	1207	1262	1316							2.71	21		
124	2800	413										0.19	4.9	5 Days	—
	4000	517	588	651								0.74	7.5		
	5200	629	691	744	795	843						1.62	11.0		
	6400	746	800	849	893	935	976	1055				3.15	14.7		
	7600	867	913	958	999	1037	1073	1144	1209			4.79	18.0		
	8200	927	971	1013	1053	1090	1125	1192				4.64	20		
	8800	989	1030	1070	1108	1144	1178					4.49	23		

Performance certified is for installation type B: Free Inlet, Ducted outlet. Power rating (Bhp) does not include transmission losses. Performance ratings do not include the effects of appurtenances (accessories). The AMCA Certified Ratings Seal applies to air performance only.

## Performance for SWB • Series 200

Model Size	CFM	RPM / Static Pressure in inches wg										Max BHP	Sones @ .5	Quick Build Best Available	In Stock	
		.5	1	1.5	2	2.5	3	3.5	4	4.5	5					
206	70	1201											0.03	6.4	5 Days	—
	120	1262	1722	2079									0.16	6.8		
	220	1489	1868	2203	2497	2760	2997	3216					0.61	8.0		
	420	2422	2567	2721	2907	3108	3313						0.74	13.7		
	570	3196	3303										0.67	22		
207	200	1098	1458										0.10	6.2	5 Days	—
	280	1244	1549	1808	2060								0.27	7.3		
	440	1591	1855	2064	2259	2446	2618	2777	2941	3103	3255		1.07	10.0		
	920	2909	3034	3156	3282								1.17	28		
	1000	3142	3255										1.11	30		
208	250	1125											0.04	7.0	5 Days	—
	370	1270	1610	1909	2172								0.26	7.7		
	610	1640	1918	2160	2378	2575	2755	2941	3121	3289			0.91	9.2		
	1210	2790	2951	3110	3263								0.98	19.9		
	1450	3282											0.91	26		
210	625	1158	1501	1809									0.27	6.3	5 Days	SWB-210-LMDX-QD
	800	1311	1583	1846	2106	2334							0.58	7.4		
	1150	1661	1872	2063	2250	2431	2615	2805	2982	3148	3305		1.65	10.0		
	2200	2885	2996	3104	3214	3329							1.95	22		
	2375	3096	3201	3300									1.82	25		
212	600	1022	1372										0.16	6.0	5 Days	SWB-212-LMDX-QD
	850	1150	1447	1710	1941								0.45	7.2		
	1350	1522	1728	1913	2113	2291	2457	2625	2783	2931	3071		1.79	10.5		
	2850	2874	2968	3067	3169								2.23	27		
	3100	3108	3199										2.17	30		
213	1000	998	1287										0.24	6.9	5 Days	—
	1840	1457	1619	1778	1931	2093	2249						1.32	11.5		
	2120	1629	1775	1913	2051	2181	2318	2462	2596	2730			2.31	13.7		
	3240	2355	2457	2555	2650	2744	2832						2.83	23		
	3800	2729	2817										2.53	29		
215	1200	886	1157										0.29	6.9	5 Days	—
	1550	1009	1214	1421									0.56	8.2		
	2600	1458	1591	1715	1840	1958	2083	2213	2333	2456			2.83	13.8		
	4350	2290	2374	2456									2.97	26		
	4700	2460											2.72	30		
216	1200	762											0.15	5.9	5 Days	SWB-216-LMDX-QD
	2100	970	1147	1322	1487	1632							1.30	8.5		
	3000	1256	1381	1505	1629	1749	1874	1994	2106	2211			3.33	12.2		
	4800	1884	1967	2042	2124	2200	2277	2355					4.60	22		
	5700	2208	2279	2348									4.19	28		
218	2000	762	963	1136									0.75	10.1	5 Days	—
	2500	862	1023	1185	1330	1459							1.58	10.1		
	3500	1092	1211	1327	1443	1557	1672	1779	1878	1971	2060		4.43	13.6		
	6500	1869	1938	2002	2065	2131							5.49	31		
	7000	2003	2067	2128									5.18	34		
220	2000	647	860										0.51	8.7	5 Days	—
	3300	836	970	1104	1243	1367	1480						2.58	10.6		
	4600	1072	1171	1267	1364	1461	1556	1658	1754	1845			5.23	15.2		
	7200	1583	1650	1711	1777	1840	1900						6.30	28		
	8500	1846	1904	1960									6.38	36		
222	2500	602	783	949									0.93	9.3	5 Days	—
	4000	768	892	1019	1137	1241	1347	1452					3.42	11.2		
	5500	976	1065	1158	1249	1339	1432	1918	1898	1674	1746		6.51	15.8		
	8500	1424	1485	1542	1601	1659	1719	1780					7.78	29		
	10000	1655	1708	1760									6.87	36		
224	3000	526	699										0.71	7.4	5 Days	SWB-224-LMDX-QD
	5700	760	856	945	1036	1126	1221	1309					4.72	12.4		
	6600	851	936	1015	1093	1171	1251	1329	1411	1487			6.98	14.5		
	9300	1139	1200	1261	1320	1378	1433	1489					7.87	24		
	12000	1440	1486	1534									7.89	34		

Performance certified is for installation type B: Free Inlet, Ducted outlet. Power rating (Bhp) does not include transmission losses. Performance ratings do not include the effects of appurtenances (accessories). The AMCA Certified Ratings Seal applies to air performance only.

## Performance for SWB • Series 300 • Backward-Inclined Wheel

Model Size	CFM	RPM / Static Pressure in inches wg						Quick Build
		.5	1	2	3	4	5	Best Available
327	5000	551	663	841				10 Days
	9500	871	934	1074	1194	1299	1395	
	14000	1233	1276	1361				
330	7000	531	630	782	911			10 Days
	12000	799	855	978	1085	1180	1266	
	17000	1093	1132	1210				
333	7500	440	535	686	821			10 Days
	15000	727	779	880	980	1070	1150	
	22500	1046	1081	1152				
336	7500	362	454	606				10 Days
	17500	631	680	777	869	951	1026	
	27500	944	976	1041				
340	12500	391	460	575	671			10 Days
	21250	589	629	710	791	863	928	
	30000	801	832	889				
344	15000	350	413	517				10 Days
	25000	516	554	629	704	770	829	
	35000	695	723	777	832			
349	20000	339	391	483	560			10 Days
	32500	497	529	594	658	717		
	45000	666	690	736				

Performance certified is for installation type B: Free inlet, Ducted outlet. Power rating (Bhp) does not include transmission losses. Performance ratings do not include the effects of appurtenances (accessories). The sound power level ratings shown are in decibels, referred to  $10^{-12}$  watts, calculated per AMCA Standard 301. Values shown are for inlet  $L_{w/A}$  sound power levels and inlet hemispherical sone levels for installation type B: Free inlet, Ducted outlet, calculated per AMCA Standard 301. The AMCA Certified Ratings Seal applies to air performance only.

## Performance for SWB • Series 300 AF • Airfoil Wheel

Model Size	CFM	RPM / Static Pressure in inches wg						Quick Build
		.5	1	2	3	4	5	Best Available
327-AF	6000	664	755	906				10 Days
	9500	953	1019	1139	1247	1340	1433	
	13000	1260	1311	1406				
330-AF	8000	631	709	839	957			10 Days
	12000	875	933	1039	1136	1219	1301	
	16000	1131	1176	1263				
333-AF	9000	541	613	742				10 Days
	14000	766	820	916	1005	1088	1167	
	19000	1002	1046	1125				
336-AF	12000	521	583	693	792			10 Days
	17000	688	737	825	905	981		
	22000	862	903	977	1045			
340-AF	15000	480	535	632	720			10 Days
	22500	677	712	784	853	918		
	30000	880	908					
344-AF	15000	376	433	532				10 Days
	25000	563	598	670	736	797	856	
	35000	762	789	839				
349-AF	20000	365	413	499				10 Days
	30000	506	539	604	665	721	775	
	40000	656	681	730	779			

Performance certified is for installation type B: Free inlet, Ducted outlet. Power rating (Bhp) does not include transmission losses. Performance ratings do not include the effects of appurtenances (accessories). The sound power level ratings shown are in decibels, referred to  $10^{-12}$  watts, calculated per AMCA Standard 301. Values shown are for inlet  $L_{w/A}$  sound power levels and inlet hemispherical sone levels for installation type B: Free inlet, Ducted outlet, calculated per AMCA Standard 301. The AMCA Certified Ratings Seal applies to air performance and  $L_{w/A}$  values only.



UL/cUL 705 - E40001 - CSW 33 through 73  
BIDW, AFDW

UL/cUL 762 Power Ventilators for Restaurant Exhaust  
Appliances - MH11745 - CSW-BI

UL/cUL Power Ventilators for Smoke Control Systems  
MH17511 - CSW-BI



Greenheck Fan Corporation certifies that the Model CSW sizes 33 through 73, BIDW and AFDW shown herein are licensed to bear the AMCA seal. The ratings shown are based on tests and procedures performed in accordance with AMCA Publication 211 and AMCA Publication 311 and comply with the requirements of the AMCA Certified Ratings Program.

AMCA Licensed Sound and Air Performance is found in Greenheck's Performance Supplements: CSW Single-Width 00.CVI.1030 R1 7-2013, Single-Width Cent Fan Supp R Rev 1 February 2004 and Double-Width 00.CVI.1001 R3 1-2012

Model	Best Available Program
CSW Sizes 33 through 73 BIDW, AFDW Through size 54 Up to Class II	10 Days
<i>Available Fall 2014</i> CSW Sizes 7 through 33	

## Model CSW Single-Width and BIDW, AFDW Double-Width Series 21 and 41

Centrifugal fans are designed for clean or contaminated ventilation applications up to 200°F. Units can be mounted (both indoor or outdoor) in ducted inlet and/or ducted outlet installations such as exhaust air, supply air, filtration, comfort conditioning, light industrial processes, fume exhaust, fluid bed pressurization and combustion air.

### Performance

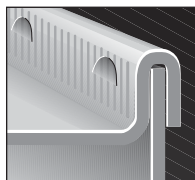
CSW-BI capacities range from 50 to 48,000 cfm  
CSW-AF capacities range from 1,400 to 50,000 cfm  
BIDW capacities range from 1,300 to 94,000 cfm  
AFDW capacities range from 3,000 to 95,000 cfm

Up to 8.5 in. wg of static pressure.

Standard Construction	
Housing - heavy-gauge steel <ul style="list-style-type: none"> <li>Series 21 - PermaLock™</li> <li>Series 41 - welded</li> </ul>	
Rotatable housing (sizes 7 through 30)	
Final assembly vibration analysis	
Minimum bearing life of L <sub>10</sub> 80,000 hours (Average life - L <sub>50</sub> 400,000 hours)	
Permatector™ protective powder coating	
Options and Accessories	
Guards - inlet, outlet	Access door - bolted, hinged
Totally enclosed belt guard (with Greenheck supplied motor & drives)	Spark B resistant construction
Motor cover (Arrangement 9)	Spark C resistant construction
Shaft guard (Arrangement 3)	Shaft seal (Arrangements 1, 9, 10)
Flanges - inlet, outlet, companion	Extended lube lines
Weatherhood (Arrangement 10)	Extended life bearings
Drain connection	Protective powder coating
Isolators - sizes 7 through 30, Arrangement 10, Class I only	UL/cUL Listed Power Ventilators for Restaurant Exhaust Appliances
Isolation base with motor slide base Arrangements 1, 3*	UL/cUL Listed Power Ventilators for Smoke Control Systems

\*Arrangements 1 and 3 must be mounted on an Isolation Base. See Greenheck's Isolation Base information on page 124 for additional details or visit [www.greenheck.com](http://www.greenheck.com)

### Housing Construction



#### Series 21 PermaLock™ Housing

Features Greenheck's exclusive airtight PermaLock™ seam. This seam provides a structural bond between the side panels and scroll wrap.



#### Series 41 Welded Housing

Features a fully welded housing.





Arrangement 10



Greenheck Fan Corporation certifies that the Model BCSW-FRP shown herein is licensed to bear the AMCA seal. The ratings shown are based on tests and procedures performed in accordance with AMCA Publication 211 and comply with the requirements of the AMCA Certified Ratings Program.

AMCA Licensed Air Performance is found in Greenheck's BCSW-FRP catalog, 00.CVI.1026 R1 6-2010

**Best Available Program**  
15 Days

## Model BCSW-FRP Belt Drive

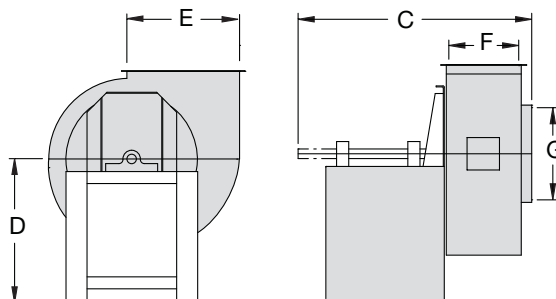
Fiberglass fans are designed to provide reliable and efficient operation for corrosive applications. Our products feature hand layup and chop spray manufacturing and comply with ASTM C582 and D4167 specifications for fiberglass laminates and blowers.

### Standard Construction

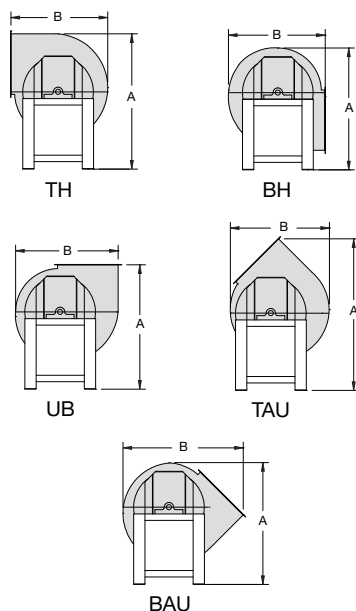
Housing - fiberglass reinforced plastic
Wheel - backward curved single-width, fiberglass reinforced plastic
Drive frame - steel, coated
Unpunched outlet
Connection - slip fit inlet
Spark A resistant construction
Weatherhood

### Options and Accessories

Drain connection
Access door - bolted, hinged
Isolators - base
Teflon® plate shaft seal
Multiple discharge positions - five



### Discharge Positions



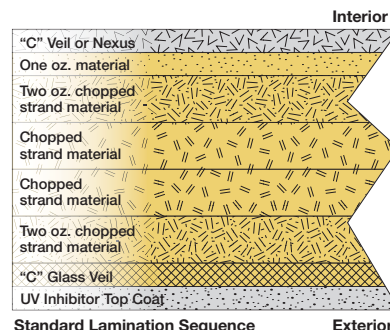
### Dimensions for BCSW-FRP

Model Size	Class	A					B				C	D	E	F	G
		TH	BH	UB	TAU	BAU	TH BH	UB	TAU	BAU					
15		33	29 <sup>5</sup> / <sub>8</sub>	29 <sup>5</sup> / <sub>8</sub>	36 <sup>1</sup> / <sub>2</sub>	28 <sup>1</sup> / <sub>2</sub>	24 <sup>3</sup> / <sub>4</sub>	26 <sup>1</sup> / <sub>2</sub>	24 <sup>1</sup> / <sub>2</sub>	30 <sup>3</sup> / <sub>4</sub>	35 <sup>1</sup> / <sub>2</sub>	24	15 <sup>3</sup> / <sub>4</sub>	11 <sup>3</sup> / <sub>4</sub>	14
18	I, II,	41 <sup>1</sup> / <sub>2</sub>	37 <sup>5</sup> / <sub>8</sub>	37 <sup>5</sup> / <sub>8</sub>	45 <sup>5</sup> / <sub>8</sub>	36 <sup>3</sup> / <sub>4</sub>	29	31 <sup>1</sup> / <sub>8</sub>	29 <sup>1</sup> / <sub>2</sub>	36 <sup>1</sup> / <sub>16</sub>	41 <sup>1</sup> / <sub>4</sub>	24	18 <sup>5</sup> / <sub>8</sub>	13 <sup>7</sup> / <sub>8</sub>	18
22	III, IV	45 <sup>9</sup> / <sub>16</sub>	40 <sup>5</sup> / <sub>8</sub>	40 <sup>5</sup> / <sub>16</sub>	51	39 <sup>9</sup> / <sub>16</sub>	35 <sup>1</sup> / <sub>4</sub>	37 <sup>5</sup> / <sub>8</sub>	35 <sup>1</sup> / <sub>2</sub>	44 <sup>3</sup> / <sub>8</sub>	44 <sup>1</sup> / <sub>16</sub>	24	22 <sup>5</sup> / <sub>8</sub>	16 <sup>5</sup> / <sub>8</sub>	20
25		52 <sup>3</sup> / <sub>4</sub>	47 <sup>1</sup> / <sub>8</sub>	46 <sup>5</sup> / <sub>8</sub>	58 <sup>1</sup> / <sub>2</sub>	45 <sup>1</sup> / <sub>2</sub>	40 <sup>3</sup> / <sub>8</sub>	43 <sup>1</sup> / <sub>2</sub>	40 <sup>7</sup> / <sub>8</sub>	51	51 <sup>1</sup> / <sub>16</sub>	28	26	19 <sup>5</sup> / <sub>8</sub>	24

All dimensions are in inches.

### Corrosion Resistance

- No steel parts exposed to the airstream.
- Resin specially formulated for resistance to corrosive chemicals.
- Nexus Veil (a synthetic cloth) layering is optional for the most severe applications, such as hydrogen fluoride and strong oxidizers.
- Ultraviolet (UV) resistant top coat. All surfaces exposed to UV rays are stabilized against ultraviolet degradation, suitable for outdoor installation.



# Centrifugal Fans - Selection Guide

## Fan Width

### Single-Width (SW) Single-Inlet, Single-Outlet

- Used in a wide range of applications
- Contaminated air, elevated temperatures, moisture content, kitchen exhaust, fume exhaust
- Typically used in ducted-in / ducted-out applications, but can be unducted at either end as needed

### Double-Width (DW) Double-Inlet, Single-Outlet

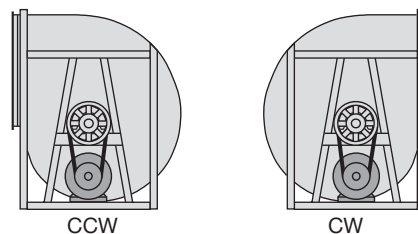
- Generally used for high volume applications or air handlers
- Clean air applications only due to bearings being located in the airstream
- Typically applied as free inlet - ducted outlet

## Spark Resistant Construction

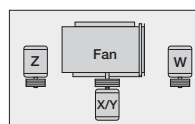
- **Spark C** - Includes aluminum inlet cone and rub ring
- **Spark B** - Includes aluminum wheel and rub ring
- **Spark A** - All airstream parts constructed from aluminum  
Consult factory for availability.

## Rotation

Choice between clockwise (CW) and counterclockwise (CCW) as determined from the drive side. Rotation changes discharge location as illustrated below.



## Motor Positions (Arrangements 1 & 3 only)



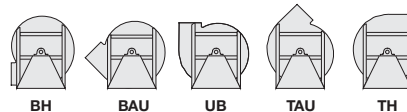
Motor position determined from the drive side. Letter assignment is independent of discharge position and fan rotation.

## Discharge Positions

**Utility Fans** - determined from the drive side. Some models and sizes allow for field rotation.

CCW TH	CW TH	CCW BH	CW BH
CCW TAD	CW TAD	CCW BAU	CW BAU
CCW DB	CW DB	CCW UB	CW UB
CCW BAD	CW BAD	CCW TAU	CW TAU

**Centrifugal Fans** - graphic shows discharge positions available on Quick Build centrifugal fans. Determined from the drive side. Some models and sizes allow for field rotation.



## Wheel Types



**Backward-Inclined Wheel**  
Centrifugal, non-overloading style with single-thickness flat blades. Most versatile wheel. Excellent for clean, high-temperature, or contaminated air.



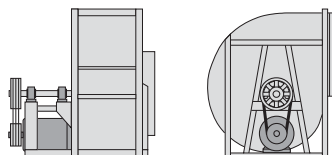
**Airfoil Wheel**  
Centrifugal, non-overloading style with airfoil shaped blades. Higher operating efficiencies. Used for clean air applications.



**BCSW-FRP Wheel**  
Non-overloading style with backward curved blades. Laid up by hand. The blades are strapped to the backplate. The backplate and hub are made of steel and encapsulated in fiberglass reinforced plastic (FRP).

### ARRANGEMENT 10 SINGLE-WIDTH

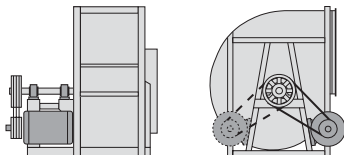
#### Backward-Inclined or Airfoil Wheel



Arrangement 10 is the most common fan arrangement. Motor is mounted on the fan under the bearing pedestal and can be enclosed with a motor cover, limited motor frame sizes, smallest overall package size. No mounting base required.

### ARRANGEMENT 9 SINGLE-WIDTH

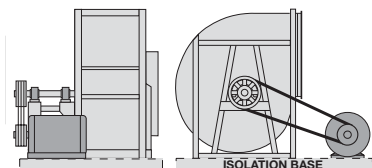
#### Backward-Inclined or Airfoil Wheel



Motor is mounted on the side of the bearing pedestal, limited motor frame sizes, smaller overall size than arrangement 1. No mounting base required.

### ARRANGEMENT 1 SINGLE-WIDTH

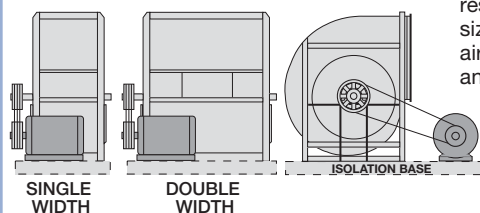
#### Backward-Inclined or Airfoil Wheel



Requires an isolation base (by factory) or structural pad to mount the fan and motor. See page 124 for more details.

### ARRANGEMENT 3 SINGLE-WIDTH AND DOUBLE-WIDTH

#### Backward-Inclined or Airfoil Wheel



Double-width (when compared to single-width) can supply an equal amount of air with a smaller wheel diameter resulting in lower overall unit size. Bearing located in the airstream limits temperatures and does not permit spark resistant construction. Requires an isolation base (by factory) or structural pad to mount the fan and motor. See page 124 for more details.