

Gravity Ventilators



FGI, FGR



RGU



Model GRS, GRSF, FGI, FGR and RGU

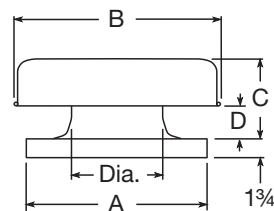
Gravity ventilators are designed to relieve or take in air via building pressure. As buildings become pressurized, they will relieve the air from the building and as they come under a negative pressure, they will allow air into the building.

| Standard Construction | GRS | GRSF | FGI, FGR | RGU | |
|--|-------|------|----------|----------|-----|
| Housing - spun aluminum | ■ | ■ | | | |
| Housing - fabra hood, galvanized or aluminum | | | ■ | | |
| Housing - upblast, galvanized | | | | ■ | |
| Birdscreen - galvanized | ■ | ■ | ■ | | |
| Corrosion-resistant fasteners | ■ | ■ | ■ | ■ | |
| Butterfly dampers - galvanized, aluminum | | | | ■ | |
| Options and Accessories | Stock | GRS | GRSF | FGI, FGR | RGU |
| Damper | ✓ | ■ | ■ | ■ | |
| Roof curb | ✓ | ■ | | ■ | ■ |
| Roof curb accessories - adaptors, extensions | | ■ | ■ | ■ | ■ |
| Damper lifters - fusible link, motorized | | | | | ■ |
| Birdscreen - aluminum | | ■ | ■ | ■ | |
| Insect screen | | ■ | ■ | ■ | |
| Insulation - ½ or 1-inch | | ■ | ■ | ■ | |
| Filters - 2-inch aluminum, washable (FGI) | | | | ■ | |
| Tie-down points | | ■ | ■ | ■ | ■ |
| 12-inch high base | | | | ■ | |
| Decorative or protective powder coating | | ■ | ■ | ■ | ■ |
| Certified for high wind applications | | | | ■ | |

| Model | Best Available Program |
|------------------------------------|------------------------|
| GRS-8 through 30 | In stock |
| GRSF-10 and 12 | |
| GRS-36 through 48 | 1 Day |
| GRSF-8, 15 through 24 | |
| FHI, FGR 8 x 8 through 72 x 180 | 5 Days |
| RGU-18 through 60 | |

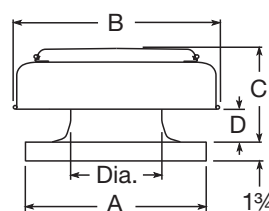
GRS

Sizes 8 thru 24



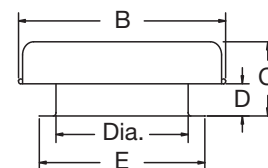
GRS

Sizes 30 thru 48



GRSF with Optional Flashing Flange

Sizes 8 thru 24



Dimensions for GRS, GRSF

| Model Size | A | B | C | D | E | Dia. | Throat Area (ft²) |
|------------|----|-----|-----|----|-----|------|-------------------|
| 8 | 19 | 20½ | 7¼ | 1½ | 20¼ | 8¼ | 0.37 |
| 10 | 19 | 20½ | 7¾ | 2 | 20¼ | 10¼ | 0.57 |
| 12 | 22 | 29 | 10 | 3½ | 23¼ | 12¼ | 0.82 |
| 15 | 22 | 29 | 10 | 3½ | 23¼ | 14¼ | 1.12 |
| 16 | 26 | 29 | 11 | 4¼ | 27¼ | 16¼ | 1.45 |
| 18 | 30 | 35½ | 9¾ | 1¾ | 31¼ | 20¼ | 1.83 |
| 20 | 30 | 35½ | 11¼ | 3¾ | 31¼ | 20¼ | 2.25 |
| 24 | 34 | 38¾ | 11 | 4 | 35¼ | 24½ | 3.24 |
| 30 | 40 | 48 | 18¾ | 5⅞ | — | 30½ | 5.03 |
| 36 | 46 | 56¾ | 21¼ | 6 | — | 36½ | 7.29 |
| 42 | 52 | 63¾ | 24¼ | 6¼ | — | 42½ | 9.77 |
| 48 | 58 | 72 | 26¼ | 6½ | — | 48½ | 12.83 |

All dimensions are in inches.



Performance for GRS, GRSF

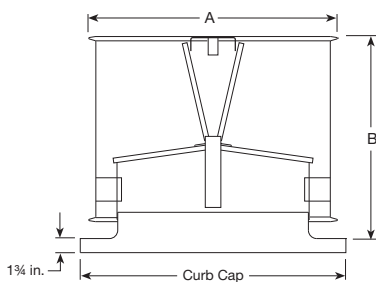
| Model Size | CFM / Total Pressure Drop in inches wg | | | | | | | | | | Quick Build | In Stock |
|------------|--|------|------|------|------|-------|-------|-------|-------|----------------|-------------|-------------------------|
| | .04 | .06 | .08 | .1 | .15 | .2 | .25 | .3 | .35 | Best Available | | |
| 8 | Relief | 231 | 282 | 326 | 365 | 446 | 516 | 576 | 631 | 682 | 1 Day | GRS-8-QD |
| | Intake | 178 | 218 | 252 | 282 | 345 | 398 | 445 | 488 | 527 | | |
| 10 | Relief | 331 | 406 | 468 | 524 | 641 | 741 | 828 | 907 | 980 | 1 Day | GRS-10-QD GRSF-10-QD |
| | Intake | 279 | 342 | 395 | 442 | 541 | 624 | 698 | 765 | 826 | | |
| 12 | Relief | 468 | 573 | 662 | 740 | 907 | 1047 | 1171 | 1282 | 1385 | 1 Day | GRS-12-QD GRSF-12-QD |
| | Intake | 400 | 490 | 566 | 633 | 775 | 895 | 1001 | 1097 | 1184 | | |
| 15 | Relief | 663 | 811 | 937 | 1048 | 1283 | 1481 | 1656 | 1814 | 1960 | 1 Day | GRS-15-QD |
| | Intake | 553 | 677 | 782 | 874 | 1071 | 1237 | 1383 | 1515 | 1636 | | |
| 16 | Relief | 870 | 1065 | 1230 | 1375 | 1685 | 1945 | 2175 | 2382 | 2573 | 1 Day | GRS-16-QD |
| | Intake | 742 | 908 | 1049 | 1173 | 1436 | 1658 | 1854 | 2031 | 2194 | | |
| 18 | Relief | 1060 | 1298 | 1499 | 1676 | 2052 | 2370 | 2649 | 2902 | 3135 | 1 Day | GRS-18-QD |
| | Intake | 901 | 1104 | 1274 | 1425 | 1745 | 2015 | 2253 | 2468 | 2665 | | |
| 20 | Relief | 1284 | 1572 | 1815 | 2029 | 2486 | 2870 | 3209 | 3515 | 3797 | 1 Day | GRS-20-QD |
| | Intake | 1096 | 1343 | 1550 | 1733 | 2123 | 2452 | 2741 | 3002 | 3243 | | |
| 24 | Relief | 1879 | 2301 | 2657 | 2971 | 3638 | 4201 | 4697 | 5145 | 5558 | 1 Day | GRS-24-QD |
| | Intake | 1542 | 1888 | 2180 | 2438 | 2985 | 3447 | 3854 | 4222 | 4560 | | |
| 30 | Relief | 2281 | 2794 | 3226 | 3607 | 4418 | 5101 | 5703 | 6247 | 6748 | 1 Day | GRS-30-QD |
| | Intake | 2013 | 2465 | 2847 | 3183 | 3898 | 4501 | 5032 | 5512 | 5954 | | |
| 36 | Relief | 3279 | 4016 | 4637 | 5184 | 6349 | 7331 | 8197 | 8979 | 9699 | 1 Day | — |
| | Intake | 2921 | 3577 | 4130 | 4618 | 5656 | 6531 | 7301 | 7998 | 8639 | | |
| 42 | Relief | 4672 | 5722 | 6607 | 7387 | 9047 | 10447 | 11680 | 12795 | 13820 | 1 Day | — |
| | Intake | 3911 | 4791 | 5532 | 6185 | 7574 | 8746 | 9779 | 10712 | 11570 | | |
| 48 | Relief | 6211 | 7607 | 8783 | 9820 | 12027 | 13888 | 15527 | 17009 | 18372 | 1 Day | — |
| | Intake | 5139 | 6294 | 7268 | 8126 | 9952 | 11491 | 12848 | 14074 | 15201 | | |

Model GRS-8 through 24 have a one-piece cover and shroud. Access is gained through the removal of screws.
 Model GRS-30 through 48 have a removable cover, separate from the shroud, to facilitate maintenance and servicing of dampers.

Performance for FGI, FGR

| | Intake (per square foot of throat area) | | | | | | Relief (per square foot of throat area) | | | | | |
|----------------------|--|------|------|------|------|------|--|------|------|------|------|------|
| | Static Pressure Drop | | | | | | Static Pressure Drop | | | | | |
| | Ducted | .030 | .047 | .071 | .089 | .119 | .149 | .024 | .043 | .060 | .084 | .107 |
| Non-Ducted | .053 | .085 | .127 | .158 | .212 | .267 | .042 | .075 | .105 | .146 | .186 | .236 |
| Hood Intake Velocity | 235 | 297 | 364 | 406 | 470 | 527 | 420 | 560 | 660 | 780 | 880 | 990 |
| Throat Velocity | 475 | 600 | 735 | 820 | 950 | 1065 | | | | | | |

RGU with Curb Cap

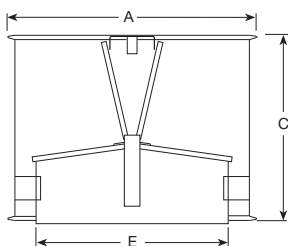


Dimensions for RGU

| Model Size | A | B | C | E | Curb Cap | Recommended Roof Opening |
|------------|--------------------------------|----|--------------------------------|--------------------------------|--------------------------------|--------------------------|
| 18 | 25 | 22 | 20 ³ / ₄ | 18 ¹ / ₂ | 28 | 22 |
| 20 | 27 ¹ / ₄ | 24 | 21 ¹ / ₄ | 20 ¹ / ₂ | 30 | 24 |
| 24 | 31 ¹ / ₈ | 26 | 24 | 24 ¹ / ₂ | 34 | 28 |
| 30 | 37 ³ / ₈ | 30 | 26 ³ / ₄ | 30 ³ / ₈ | 40 | 34 |
| 36 | 43 ¹ / ₂ | 33 | 29 ¹ / ₄ | 36 ³ / ₈ | 46 | 40 |
| 42 | 48 ³ / ₈ | 38 | 34 ¹ / ₄ | 42 ³ / ₄ | 52 | 46 |
| 48 | 56 | 40 | 34 ¹ / ₄ | 48 ¹ / ₂ | 58 | 52 |
| 54 | 62 ³ / ₈ | 45 | 40 ¹ / ₄ | 55 | 66 ¹ / ₂ | 60 |
| 60 | 68 ³ / ₄ | 48 | 43 ¹ / ₈ | 61 | 72 ¹ / ₂ | 66 |

All dimensions are in inches.

RGU without Curb Cap



Performance for RGU

| Model Size | Throat Area (ft ²) | CFM / Total Pressure Drop in inches wg | | | | | | | Minimum CFM Required to Open Dampers | |
|------------|--------------------------------|--|-------|-------|-------|-------|-------|-------|--------------------------------------|------------|
| | | 0.1 | 0.2 | 0.3 | 0.4 | 0.5 | 0.6 | 0.7 | Aluminum | Galvanized |
| 18 | 1.83 | 1460 | 2065 | 2530 | 2921 | 3265 | 3577 | 3864 | 2750 | 3520 |
| 20 | 2.26 | 1825 | 2581 | 3162 | 3651 | 4081 | 4471 | 4830 | 3170 | 4090 |
| 24 | 3.24 | 2800 | 3959 | 4851 | 5601 | 6260 | 6859 | 7409 | 3950 | 5220 |
| 30 | 5.03 | 4781 | 6759 | 8281 | 9562 | 10687 | 11709 | 12648 | 6050 | 7130 |
| 36 | 7.22 | 7602 | 10749 | 13168 | 15206 | 16995 | 18620 | 20113 | 7620 | 10980 |
| 42 | 9.85 | 10290 | 14548 | 17823 | 20580 | 23002 | 25201 | 27222 | 11050 | 13550 |
| 48 | 12.83 | 14142 | 19994 | 24494 | 28284 | 31612 | 34635 | 37412 | 12820 | 16420 |
| 54 | 16.50 | 18508 | 26155 | 32041 | 36999 | 41352 | 45306 | 48940 | 21430 | 21430 |
| 60 | 20.29 | 24031 | 33981 | 41630 | 48071 | 53727 | 58863 | 63585 | 24820 | 24820 |

Values shown in gray are not recommended.