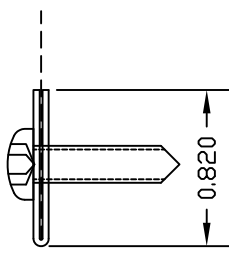
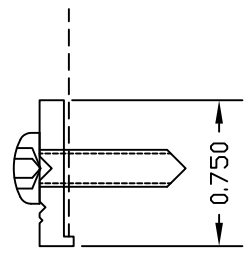


**DETAIL "B"**  
**SCREEN FRAME**



0.031" [0.813mm]  
22GA 5052-H32  
ALUMINUM COIL

**OPTIONAL SHAPES**  
**SCREEN FRAME**



0.125" [3.175mm]  
6063-T5 EXTRUDED  
ALUMINUM

**ATTACHMENT**

ALUMINUM SCREEN FRAMES ARE SECURED W/ 300 SERIES STAINLESS STEEL SHEET METAL SCREWS; AND, GALVANIZED STEEL SCREEN FRAMES ARE SECURED WITH PLATED STEEL SHEET METAL SCREWS. ALL FASTENERS ARE SPACED APPROXIMATELY 16" ON CENTER.

**FINISH**

BIRD SCREEN: UNLESS OTHERWISE SPECIFIED, ALL BIRD SCREEN AND FRAMES ARE FURNISHED IN NATURAL MILL FINISH. BIRD MESHES AND FRAMES CAN BE SUPPLIED IN ANY GREENHECK STANDARD FINISHES AND COLORS (EXCLUDING ANODIZE).

**SCREEN MESH**

MAT'L	BIRD SCREEN TYPE			DIAMETER/THICKNESS			FREE AREA %
	ENGLISH	METRIC (mm)		ENG.	METRIC (mm)		
ALUM.	3/4" x .050"	19.05 x 1.27	FLATTENED DIAMOND MESH	.050"	1.270	THICK.	61
ALUM.	1/4"	6.350	SQUARE MESH WIRE	.048"	1.219	DIAM.	71
ALUM.	1/2"	12.70	SQUARE MESH WIRE	.063"	1.600	DIAM.	80
ALUM.	3/4" x .050"	19.05 x 1.27	SQUARE MESH WIRE (PVC COATED)	.050"	1.270	THICK.	61
ALUM.	1" x .120"	25.4 x 3.048	SQUARE MESH WIRE	.120"	3.048	THICK.	80
ALUM.	3/4"	19.05	SQUARE MESH WIRE	.125"	3.175	THICK.	62
GALV.	1/2"	12.70	SQUARE MESH WIRE	.041"	1.041	DIAM.	71
STN STL	1/2"	12.70	SQUARE MESH WIRE	.047"	1.194	DIAM.	70

\* \*DUE TO CONTINUING RESEARCH, GREENHECK RESERVES THE RIGHT TO CHANGE SPECIFICATIONS WITHOUT NOTICE.\* \*



**GREENHECK**  
P.O. BOX 410 SCHOFIELD, WISCONSIN 54476-0410

DRAWN BY: NAH

SCALE: NONE

DATE: 10/6/2011

**FOLDED  
SCREEN FRAME**

REV. NO: 3

FORM NO: 623067

© COPYRIGHT, GREENHECK FAN CORP.