

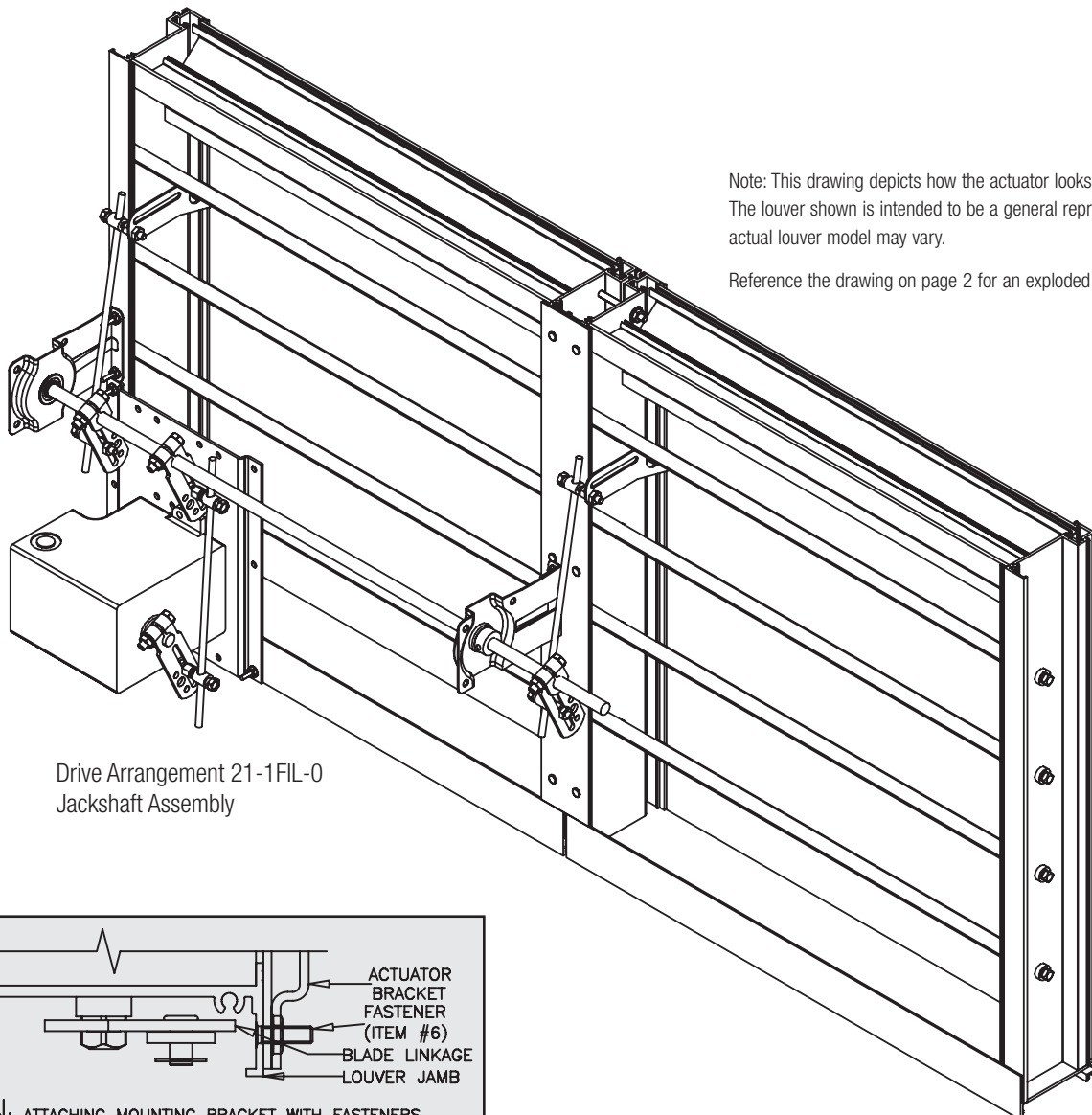
Invensys Actuator

21-1FIL-0 Drive Arrangement

Jack Shaft Assembled

Installation, Operation, and Maintenance Instructions

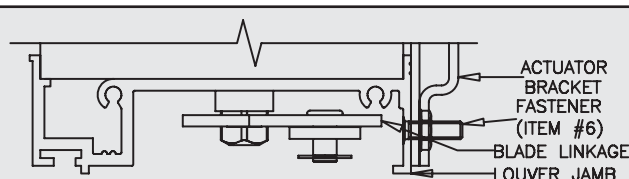
This manual is the property of the owner, and is required for future maintenance.
Please leave it with the owner when the job is complete.



Drive Arrangement 21-1FIL-0
Jackshaft Assembly

Note: This drawing depicts how the actuator looks after installation.
The louver shown is intended to be a general representation and the actual louver model may vary.

Reference the drawing on page 2 for an exploded view and parts list.



CAUTION: ATTACHING MOUNTING BRACKET WITH FASTENERS OTHER THAN AS SHOWN ABOVE CAN INTERFERE WITH BLADE LINKAGE OPERATION. ANY METHOD OF ATTACHMENT OTHER THAN THE ONE SHOWN IS NOT RECOMMENDED.

SAFETY WARNING:

Improper installation, adjustment, alteration, service or maintenance can cause property damage, injury or death. Read the installation, operating, and maintenance instructions thoroughly before installing or servicing this equipment.

Prior to Adjusting

1. Louver MUST BE installed level and square for blades to operate correctly.
2. Install actuator and linkage similar to the drawing on page 1 and make the following linkage adjustments. Place ball swivel at initial location as show below. Adjust crankarm on the actuator so that it is parallel with linkage rod. If unit is "Fail Open" all adjustments will need to be made with the actuator in power on position

Note: At this time the blades should flop freely.

3. Loosen nut and bolt on actuator crankarm so that crank arm rotates freely by hand.

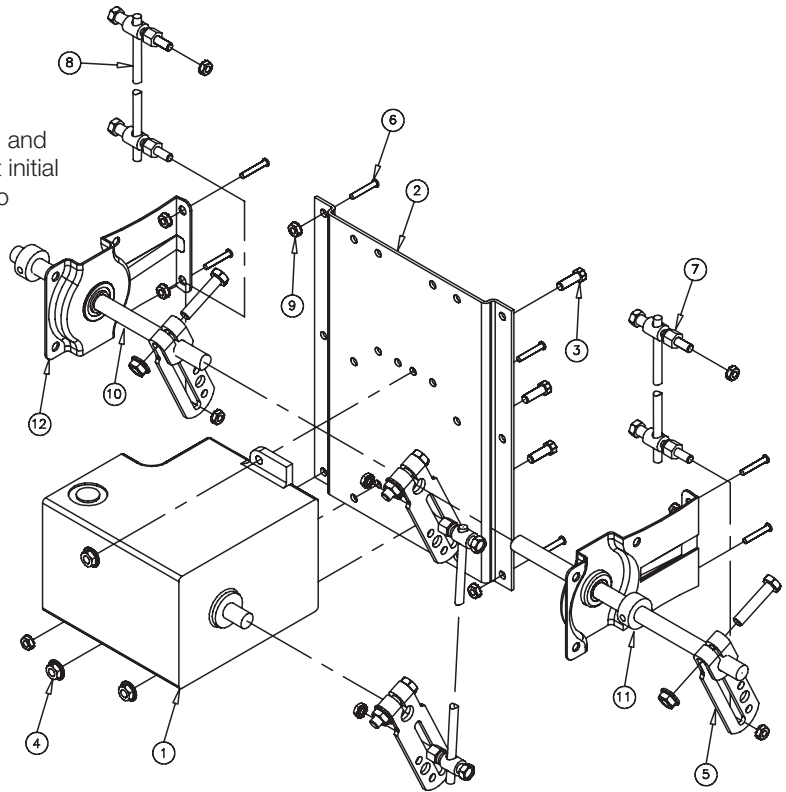
Adjustment Process

1. With blades closed, rotate crankarm on actuator 1/8 turn toward louver from original starting point. Hold blade with ball swivel in closed position and tighten driver blade ball swivel to drive rod.
2. Rotate crankarm on actuator 1/8 turn back to original position. Tighten nut and bold on crankarm. This will apply extra pressure to blade seals.

Note: It is important to keep all three crankarms on the 1/2" shaft parallel to each other.

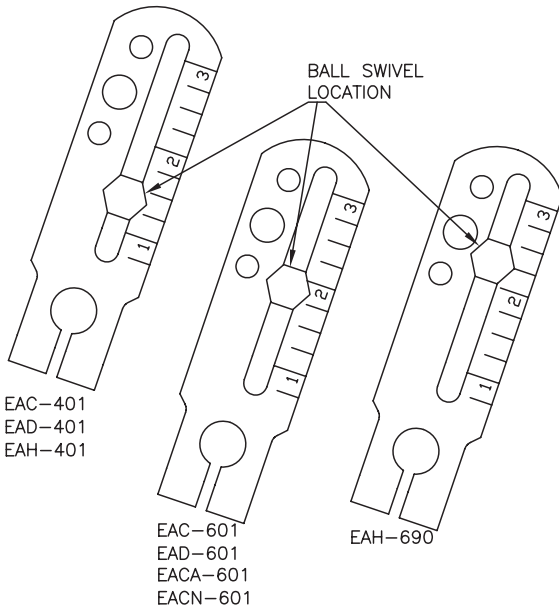
Caution: Before operating louver, make sure the ball swivel on the crankarm is in the correct location. If the blades are not completely closing the ball swivel can be adjusted SLIGHTLY. An over adjustment can cause damage to the blades.

Caution: Before operating the louver, make sure the location of the ball swivel on the crankarm allows the proper travel length.

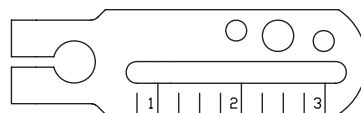


Item No.	Part No.	DA 21-1FIL-0 Qty.	Description
1A	380712	1 Required per Unit	Actuator MA-305 24V
1B	380720		Actuator MA-305-500 24V
1C	380708		Actuator MA-405 120V
1D	380722		Actuator MA-405-500 120V
1E	380713		Actuator MA-318 24V
1F	380721		Actuator MA-318-500 24V
1G	380709		Actuator MA-418 120V
1H	380723		Actuator MA-418-500 124V
2	508936	1	Actuator Mounting Bracket
3	415034	3	1/4-20 x .75 HH ZP MS
4	415455	3	1/4-20 x Spinlock Not ZP
5	812097	4	Crankarm Assembly
6	416010	7	#10-32 x 1 Threadstud SS
7	451554	6	Ball Swivel 1/4-20 x 9/16
8	656473	3	5/16 Diameter Rod, Galv., 16" Long
9	415991	7	#10-32 SS Keps Nut
10	150144	1	1/2" Diameter Rod (see note)
11	451576	2	Bearing Lock
12	814971	2	Jackshaft Bracket

Note: Jackshaft (10) Length = Unit Section Width + 4"



It maybe necessary to adjust the swivel on the crankarm after the initial adjustments are made. This can be done by sliding the swivel in or out on the crankarm.



Sliding the swivel out on the crankarm will cause the blade to open more.

Sliding the swivel in on the crankarm will cause the blade to close more.



Copyright © 2006 Greenheck Fan Corporation
Invensys Actuator, DA 21-1FIL-0, Jackshaft Assembled
November 2006

Greenheck Fan Corporation reserves the right to make product changes.