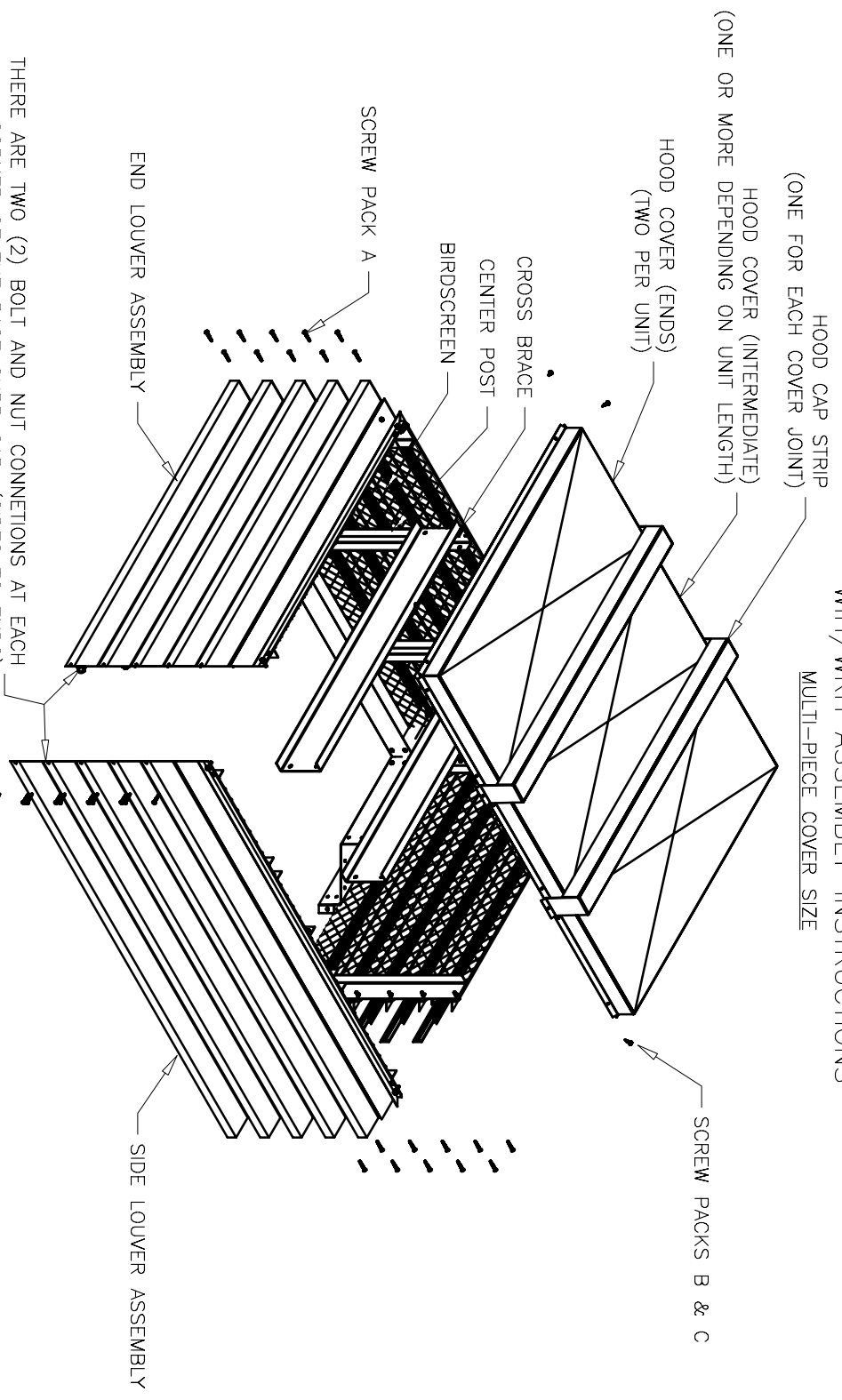


WIH/WRH ASSEMBLY INSTRUCTIONS  
MULTI-PIECE COVER SIZE



THERE ARE TWO (2) BOLT AND NUT CONNECTIONS AT EACH CORNER OF THE BASE CURB CAP. (SIDES TO ENDS)

NOTE: WHEN THE UNIT IS OF A SQUARE SIZE, THE SIDE LOUVER ASSEMBLY IS INTERCHANGEABLE WITH THE END ASSEMBLY.

AFTER ASSEMBLY OF THE SIDES TO THE ENDS, ATTACH THE CROSS BRACE(S) TO THE SIDE CENTER POSTS PRIOR TO APPLYING THE COVERS.

WIH/WRH MULTI-PIECE COVER

DUE TO CONTINUING RESEARCH GREENHECK RESERVES THE RIGHT TO CHANGE SPECIFICATIONS WITHOUT NOTICE