

**SSDFDR Series  
Fire Dampers and  
FSDR, SEFSDR, SSFSDR, Series  
Combination Fire Smoke Dampers  
Installed in Concrete Floor with Steel Deck**

Refer to:  
'Installation Instructions for FDR, SSFDR, DFDR, SSDFDR, SEDFDR Series Round Fire Dampers' (Part #452721)  
or  
'Installation Instructions for FSDR, SEFSDR, SSFSDR Series Round Combination Fire Smoke Dampers' (Part #453562)

**Application**

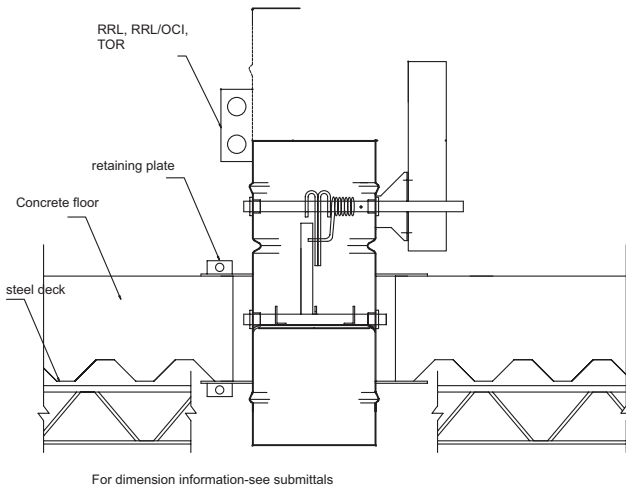
Horizontal installation of FDR, SSFDR, DFDR, SEDFDR, SSDFDR, FSDR, SEFSDR, SSFSDR models in concrete floors utilizing a steel deck. The hole opening made through the concrete floor may not allow the bottom plate to be placed against the steel deck on an even plane. This installation details how to properly install the required retaining plates next to the steel deck.

**"UL CLASSIFIED (see complete marking on product)"**  
**"UL CLASSIFIED to Canadian safety standards (see complete marking on product)"**  
Standard 555 (Listing #R13317)  
Standard 555S (Listing #R13447)

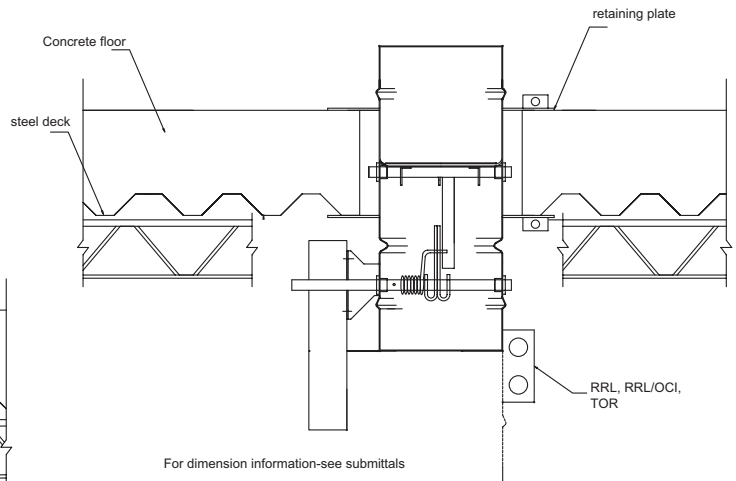


**Notes**

1. Damper assemblies must be installed in wall/floor openings using a single retaining plate on either side of the wall/floor. The use of a second retaining plate is allowed, but is not necessary. A single retaining plate is provided with the dampers. A second retaining plate can be ordered as an option.



**Figure 1: Damper installed in concrete floor with steel deck with actuator above the floor**



**Figure 2: Damper installed in concrete floor with steel deck with actuator below the floor.**