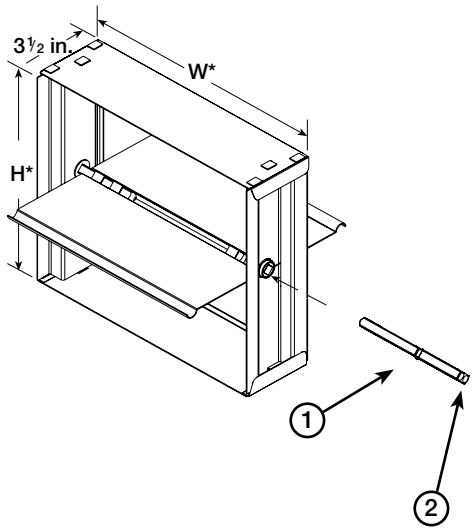


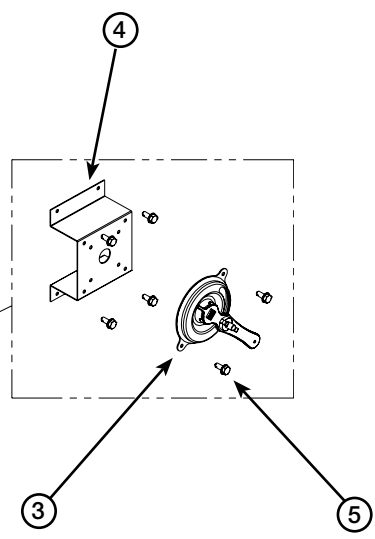
### FIELD INSTALLATION INSTRUCTIONS

Item	Qty	Description	Part Number
1	1	51/2 in. blade axle pin	452899
2	1	Blade axle ring	451890
3	1	Manual quadrant	452842
4	1	1 1/2 in. mounting bracket	649607
5	6	#10 x 1/2 in. TEK ZP	415555

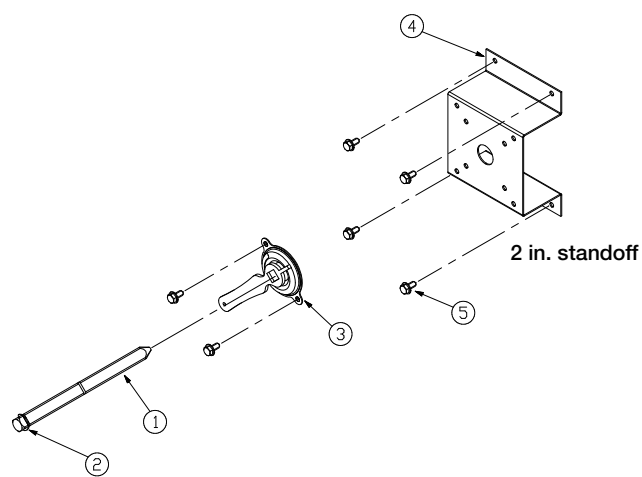
**TOOLS REQUIRED:**  
 Hammer  
 5/16 in. Driver  
 Electric Drill



1 1/2 in. Standoff Kit (Shipped Loose)



1. Mount the damper in the duct.
2. Cut a hole in the duct over the square axle bearing large enough for the axle pin to slide through.
3. Remove the blade axle ring (2). Slide out the existing axle pin 2 1/4 in. and (4) slide the standoff bracket (2) and the manual quadrant on to the pin. Slide the blade axle ring (2) back on the pin.
4. With the axle pin (1), manual quadrant (3), and standoff bracket (4) assembled, pound the axle pin into the damper until the clip (2) on the axle pin (1) presses firmly against the manual quadrant. Make sure the blade of the damper is closed and the lever on the manual quadrant is in the closed position before attaching the assembly to the damper.
5. Screw the manual quadrant (3) through the holes in the standoff bracket (4) with two self-drilling screws (5) provided.
6. Screw the standoff bracket (4) to the duct with four self-drilling screws (5) provided by others.



Item	Qty	Description	Part Number
1	1	51/2 in. blade axle pin	452899
2	1	Blade axle ring	451890
3	1	Manual quadrant	452842
4	1	2 in. mounting bracket	704826
5	6	#10 x 1/2 in. TEK ZP	415555