

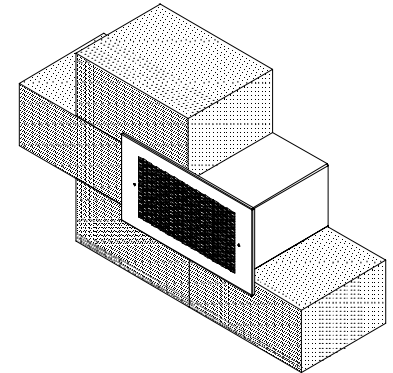
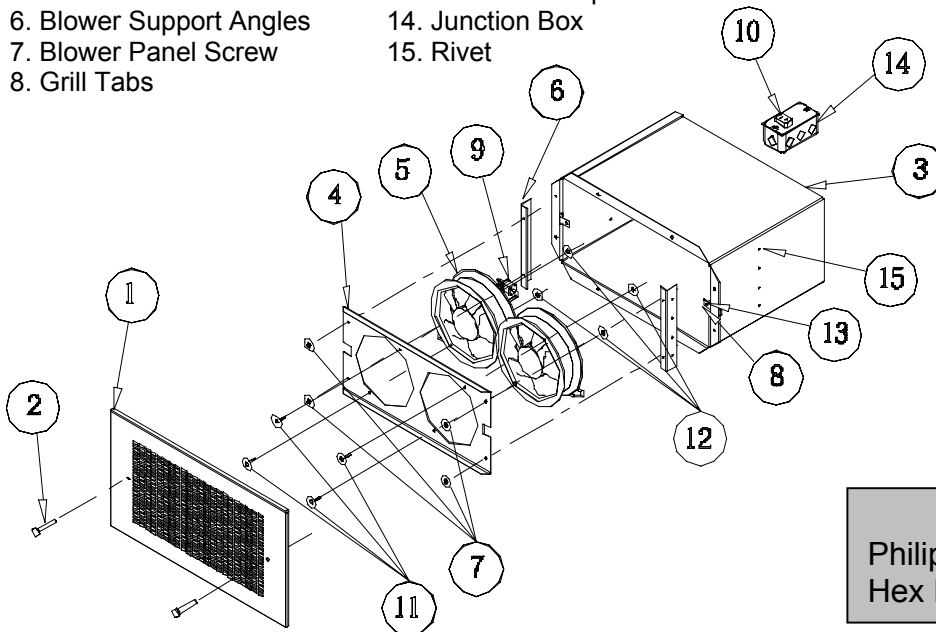


Model: Concrete Block Fan
(CBF-205)

Installation, Operation and Maintenance Manual

Parts List

- | | |
|--------------------------|-------------------------------------|
| 1. Grill | 9. Electrical Cord |
| 2. Grill Screw | 10. Receptacle plug (115 Volt only) |
| 3. Block Fan Housing | 11. Blower screw |
| 4. Blower Panel | 12. Blower nut |
| 5. Blowers | 13. Tinnerman clip |
| 6. Blower Support Angles | 14. Junction Box |
| 7. Blower Panel Screw | 15. Rivet |
| 8. Grill Tabs | |



Tools Required-
Philips Head Screwdriver
Hex Head Sockets and wrench

WARNING!

To reduce the risk of fire, electric shock, or injury to persons observe the following:

- Use this unit only in the manner intended by the manufacturer. If you have any questions, contact the manufacturer.
- For General Ventilation use only. Do not use to exhaust hazardous or explosive materials and vapors.
- Before servicing or cleaning unit, switch power off at service panel and lock service panel to prevent power from being switched on accidentally. When the service disconnecting means cannot be locked, securely fasten a prominent warning device, such as a tag, to the service panel.
- Installation work and electrical wiring must be done by qualified person(s) in accordance with all applicable codes and standards, including fire-rated construction.
- The combustion airflow needed for safe operation of fuel-burning equipment may be affected by this unit's operation. Follow the heating equipment manufacturer's guideline and safety standards such as those published by the National Fire Protection Association (NFPA), and the American Society for Heating, Refrigeration and Air Conditioning Engineers (ASHRAE), and the local code authorities.

See other side for Service and Maintenance instructions.

READ AND SAVE THESE INSTRUCTIONS

CAUTION

For General Ventilation use only.
Do not use to exhaust hazardous or explosive materials and vapors.

Service and Maintenance:

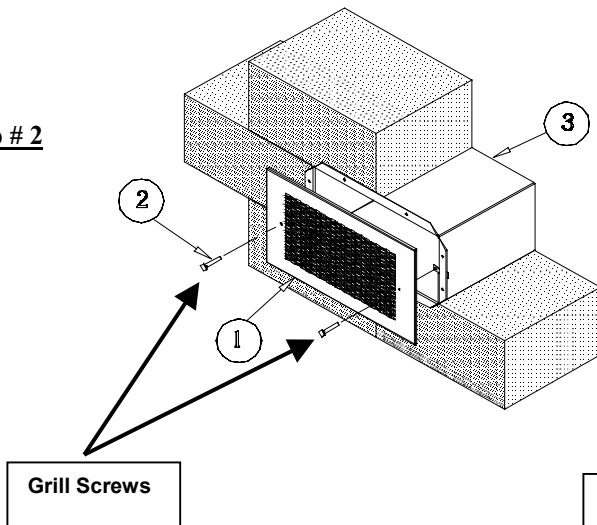
1. Turn off **all** power going to Concrete Block Fan.
2. Remove (2) grill screws with Phillips Head screwdriver. (see Step # 2)
3. Unfasten (4) blower panels screws from support angles. (see Step # 3)
4. Pull blower assembly out approximately 12 inches.
5. Reach inside housing and unplug receptacle from junction box.

General Maintenance Suggestions

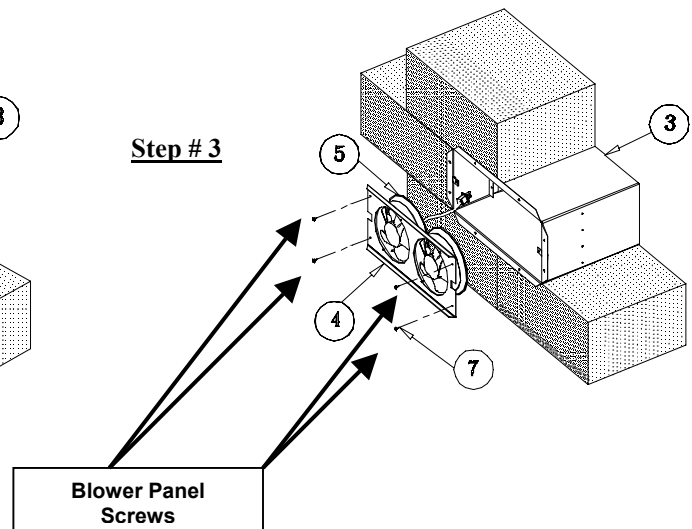
Model (CBF-205) concrete block exhaust fan requires very little maintenance. However, since small problems left unchecked could over time lead to loss of performance or early motor failure, we do recommend that the unit be inspected periodically (once or twice a year).

The fan motor and wheel(s) should be checked for dust and dirt accumulations. Dirt buildup can lead to loss of performance and motor overheating. Cleaning can be accomplished by brushing of any dust that may have accumulated.

Step # 2



Step # 3



Warranty

Greenheck warrants this equipment to be free from defects in material and workmanship for a period of one year from the purchase date. Any units or parts which prove defective during the warranty period will be replaced at our option when returned to our factory, transportation prepaid.

Motors are warranted by the motor manufacturer for a period of one year. Should motors furnished by Greenheck prove defective during this period, they should be returned to the nearest authorized motor service station. Greenheck will not be responsible for any removal or installation costs. Due to continuing research, Greenheck reserves the right to change specifications without notice.