

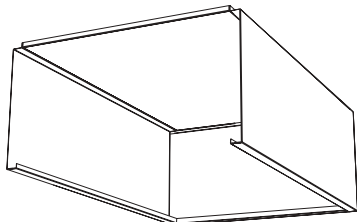
QUICK SPECIFICATION

The hoods shall be of the Type II exhaust only canopy style.

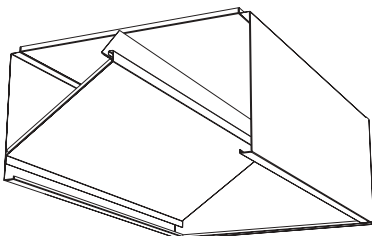
The hood shall be constructed of a minimum of 18 gauge type 304 stainless steel with a #4 finish. The hoods shall be constructed using the standing seam method. All seams shall be welded and/or liquidtight.

Lighter material gauges, alternate material types and finishes are not acceptable.

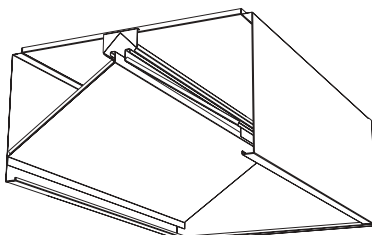
GD models shall include a full perimeter, welded condensate collecting gutter.



The GD1 shall have no condensate baffles.



The GD2 shall include one full length, removable condensate baffle constructed of 18 gauge type 304 stainless steel.



The GD3 shall include two full length, removable condensate baffles constructed of 18 gauge type 304 stainless steel.

MODEL G ____

Oven and Condensate Hoods

Type:

- O** - Oven Hood
- D1** - No Condensate Baffles
- D2** - Condensate Baffles on One Side
- D3** - Condensate Baffles on Both Sides

STANDARD FEATURES:

- NSF Certified
- 18 Ga. 304 SS
- Sizes - Length: 36 in. to 192 in. Widths: 36 in. to 72 in. Height: 24 in., 30 in., 36 in. (18 in. Model GO only)
- Complies with all National Codes and Standards

OPTIONS:

- Incandescent Lights (not available on Model GD3)
- Drain (Standard on Model GD3, not available on Model GO)
- 18 Ga. 430 SS (Model GO only), 16 Ga. 304 SS
- Duct collars factory attached (ship loose duct collars standard)
- Insulation (available on Model GD1 and GD2 only)

ACCESSORIES:

- Light / Fan switches, hood mounted or remote mounted (not available on Model GD3)
- Filler panels for clearance to limited combustibles
Height: ____ inches
- Stainless steel backsplash panel, insulated or non-insulated
- Enclosure panels to span between hood and ceiling
Height: ____ inches
- End Skirts for improved capture and performance (available on model GO only)
- External Supply Plenums (see next page)
__ Face __ Air Curtain __ Variable __ Back Supply

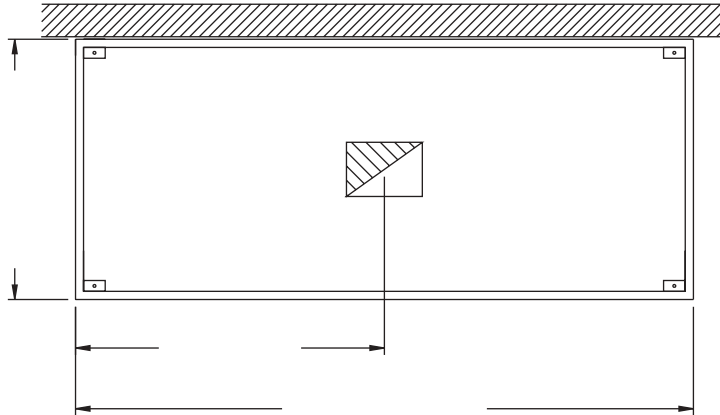
Due to continuous research, Greenheck reserves the right to change specifications without notice.

Hood Size: Length _____ Width _____ Height _____
 Exhaust CFM _____ Static Pressure _____
 Duct Collar Qty _____ Length _____ Width _____

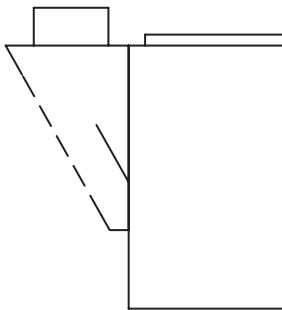
Code Information

Greenheck Kitchen Hoods are built in accordance with the following codes, standards, and recommended practices.

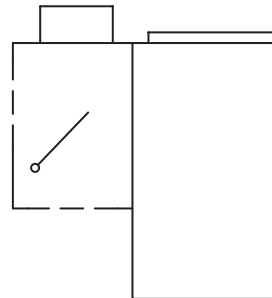
- NSF
- NFPA 96
- BOCA
- SBCCI
- UMC



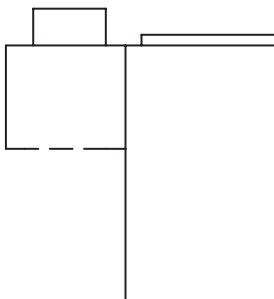
External Supply Plenums



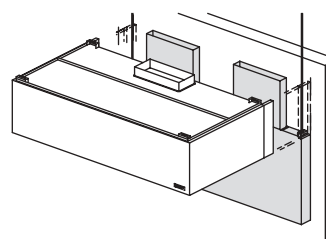
Face Supply Plenum has perforated diffusers that distribute the air evenly - no disruptive airflow patterns to cause spillage.



Variable Supply Plenum introduces air either through the face, or the face and air curtain both. This allows the staff to vary the airflow through the plenum.



Air Curtain Supply Plenum introduces air in a downward pattern that contains contaminated air while providing cooling to the cooks.



Back Supply Plenum introduces air below and behind the cooking equipment allowing air to rise and mix with room air.